

# FACT BOOK

# 2010-2011

July 2013

---

**Prepared by the Office of Institutional Research**

San Antonio College, 1300 San Pedro Avenue, San Antonio, Texas 78212  
210-486-0936

Visit us on the web at: <http://www.accd.edu/sac/ir>

The Alamo Community Colleges do not discriminate on the basis of race, religion, color, national origin, sex, age, or disability with respect to access, employment programs, or services.

**Contents**

**INTRODUCTION ..... 5**

**CONTENTS - COLLEGE PROFILE..... 6**

    HISTORY ..... 7

    MISSION STATEMENT ..... 8

    VISION STATEMENT ..... 8

    VALUES ..... 9

    SAN ANTONIO COLLEGE - THE YEAR IN REVIEW ..... Error! Bookmark not defined.

    OUTSTANDING FORMER STUDENTS ..... 10

    SAN ANTONIO COLLEGE ORGANIZATION CHART ..... 11

**CONTENTS - STUDENT PROFILE ..... 12**

    Gender, Ethnicity, Age, Major, Hours Enrolled, Day vs. Evening..... 13

    TOP TEN ACADEMIC MAJORS ..... 14

    TOP TEN PROFESSIONAL/TECHNICAL MAJORS..... 14

    TOP TEN FEEDER HIGH SCHOOLS ..... 14

    TOP TEN ZIP CODES OF RESIDENCE ..... 15

    TOP TEN COUNTIES OF RESIDENCE ..... 15

    TOP TEN STATES OF RESIDENCE..... 15

    Student Objective in Attending San Antonio College ..... 16

    Previous College Experience ..... 16

    FINANCIAL AID AWARDS 2010-2011 ..... 17

    GRADE DISTRIBUTION – FALL 2010 ..... 18

    GRADE DISTRIBUTION TRENDS – FALL 2006-2010 ..... 18

    GRADE DISTRIBUTION TRENDS – DEVELOPMENTAL EDUCATION FALL 2006-2010 ..... 19

    SUMMARY DEGREE DATA ..... 20

        GRADUATES BY CERTIFICATES & DEGREES AWARDED 2009-2010 ..... 20

        GRADUATES BY ETHNICITY 2009-2010 ..... 20

        CERTIFICATES & DEGREES AWARDED 2005-2006 TO 2009-2010 ..... 20

        GRADUATES BY ETHNICITY 2005-2006 TO 2009-2010..... 20

**STUDENT RETENTION BY DECLARED MAJOR..... 21**

<b>CONTENTS – ENROLLMENT TRENDS.....</b>	<b>39</b>
<b>ACCD GEOGRAPHIC BOUNDARIES &amp; SERVICE AREA .....</b>	<b>40</b>
<b>ENROLLMENT BY SERVICE AREA, FALL 2010.....</b>	<b>40</b>
<b>ENROLLMENT FALL SEMESTERS 2001-2010.....</b>	<b>41</b>
<b>ENROLLMENT SPRING SEMESTERS 2002-2011 .....</b>	<b>41</b>
<b>ENROLLMENT SUMMER SESSION I 2001-2010 .....</b>	<b>42</b>
<b>ENROLLMENT SUMMER SESSION II 2001-2010 .....</b>	<b>42</b>
<b>ENROLLMENT TRENDS BY CLASSIFICATION, FALL 2006-2010.....</b>	<b>43</b>
<b>GENDER, FALL 2006-2010 .....</b>	<b>44</b>
<b>ETHNICITY, FALL 2006-2010 .....</b>	<b>44</b>
<b>PTE VS. ARTS &amp; SCIENCES ENROLLMENT, FALL 2006-2010.....</b>	<b>45</b>
<b>PART-TIME VS. FULL-TIME, FALL 2006-2010.....</b>	<b>45</b>
<b>DAY VS. EVENING FALL 2006-2010.....</b>	<b>46</b>
<b>RESIDENCY, FALL 2006-2010 .....</b>	<b>46</b>
<b>AGE, FALL 2006-2010.....</b>	<b>47</b>
<b>FIRST-TIME STUDENTS, FALL 2006-2010 .....</b>	<b>47</b>
<b>CONTACT HOURS 2006-2007 TO 2010-2011.....</b>	<b>50</b>
<b>DUAL CREDIT BY HIGH SCHOOL OF ATTENDANCE .....</b>	<b>51</b>
<b>DISTANCE EDUCATION – ENROLLMENT .....</b>	<b>53</b>
<b>FALL 2006 TO FALL 2010 .....</b>	<b>53</b>
<b>DEVELOPMENTAL EDUCATION .....</b>	<b>53</b>
<b>ENROLLMENT FALL SEMESTERS 2006-2010.....</b>	<b>53</b>
<b>DEVELOPMENTAL EDUCATION .....</b>	<b>54</b>
<b>FALL SEMESTERS 2006-2010 .....</b>	<b>54</b>
<b>CONTINUING EDUCATION TRAINING NETWORK.....</b>	<b>55</b>
<b>Gender, Ethnicity, Age, Special Populations .....</b>	<b>55</b>
<b>HEADCOUNT TRENDS BY QUARTER (REIMBURSABLE COURSES).....</b>	<b>56</b>
<b>CONTACT HOUR TRENDS BY QUARTER (REIMBURSABLE COURSES) .....</b>	<b>56</b>
<b>CLASS TRENDS BY QUARTER (REIMBURSABLE COURSES).....</b>	<b>56</b>
<b>CONTENTS – DISTRICT REPORTS .....</b>	<b>57</b>
<b>Developmental Education Fall Semesters 2006-2010.....</b>	<b>58</b>

---

ALL DEVELOPMENTAL ENGLISH—PRODUCTIVE GRADE RATES .....	58
ALL DEVELOPMENTAL MATH—PRODUCTIVE GRADE RATES .....	59
DEVELOPMENTAL READING—PRODUCTIVE GRADE RATES.....	62
<b>CONTENTS – PERSONNEL PROFILE .....</b>	<b>64</b>
<b>FACULTY PROFILE – FALL 2010.....</b>	<b>65</b>
<b>Full-Time Faculty—Fall 2010.....</b>	<b>66</b>
<b>Faculty Rank—Fall 2010 .....</b>	<b>66</b>
<b>Full Time Employee Profile by Gender—Fall 2010.....</b>	<b>66</b>
<b>Full Time Employee Profile by Ethnicity—Fall 2010.....</b>	<b>67</b>
<b>CONTENTS – FINANCIAL PROFILE.....</b>	<b>68</b>
<b>ACCD TUITION &amp; FEES 2010-2011 .....</b>	<b>69</b>
<b>2009-2010 San Antonio College Base Revenues .....</b>	<b>70</b>
<b>2010-2011 San Antonio College Budget Object Code Summary by Managing Area....</b>	<b>Error! Bookmark not defined.</b>

## INTRODUCTION

**The San Antonio College Fact Book provides general statistical information about the College which may be useful to those engaged in planning, preparing reports, writing grant proposals, or other endeavors within the College.**

**It is important for the reader to be aware that data presented in this publication may differ slightly from statistics found in other College and District reports. Such variances may be the result of data gathering techniques, including the sources used or the reporting period for the data. For these reasons, the source of the information used to generate each table or graph is cited. Trends involving tracking of data should reference identical sources each semester.**

---

## CONTENTS - COLLEGE PROFILE

<b>INTRODUCTION .....</b>	<b>5</b>
<b>CONTENTS - COLLEGE PROFILE.....</b>	<b>6</b>
<b>HISTORY.....</b>	<b>7</b>
<b>MISSION STATEMENT.....</b>	<b>8</b>
<b>VISION STATEMENT .....</b>	<b>8</b>
<b>VALUES .....</b>	<b>9</b>
<b>SAN ANTONIO COLLEGE ORGANIZATION CHART .....</b>	<b>11</b>

## HISTORY

San Antonio College was established as University Junior College in September 1925, under the auspices of the University of Texas. The following year, control of the college was transferred to the San Antonio Independent School District and the name was changed to San Antonio Junior College. Following the passage of state legislation authorizing junior college districts, the San Antonio Union Junior College District was formed in 1945 and it assumed control of San Antonio Junior College and its sister college, St. Philip's Junior College. In 1948, San Antonio Junior College's name was changed to San Antonio College and in 1951, the college moved to its present location on San Pedro Avenue. Five hundred students were enrolled at that time. The Southern Association of Colleges and Schools (SACS) granted the College accreditation in 1955.

In the late 1960s, San Antonio College became a comprehensive community college by expanding offerings in occupational and technical courses and by assuming the San Antonio Independent School District's continuing education program. The name of the college district was changed San Antonio Community College District in 1978 and again in 1982 to Alamo Community College District. In 2009, the District was rebranded as the Alamo Colleges, complete with new common logos for all of the schools.

In support of the mission of the Alamo Community College District, San Antonio College responds to Bexar County's diverse community by providing high quality general education, liberal arts and sciences, career education, continuing education, and developmental education. The college continues to grow, serving an average semester enrollment of 23,000 credit students. San Antonio College is the largest single-campus community college in Texas and one of the largest in the United States.

## MISSION STATEMENT

San Antonio College is a public community college which provides for and supports the educational and lifelong learning needs of a multicultural community. As a leader in education, San Antonio College is committed to excellence in helping students reach their full potential by developing their academic competencies, critical thinking skills, communication proficiency, civic responsibility, and global awareness. San Antonio College fulfills its mission by offering the following:

- Transfer education designed to provide students with the first two years of the bachelor's degree.
- General education courses in the liberal arts and sciences to support all college degree programs.
- Career preparation provided through a wide range of programs to prepare students for immediate employment.
- Developmental studies for students needing to bring their basic skills to a level appropriate for college work.
- Continuing education to offer a variety of training, licensure, and professional programs.
- Strategic Enrollment Management that includes a uniform strategy to identify, attract, enroll, and retain students who reflect the population of our service area.
- Academic support services that include a comprehensive learning resource center and basic skills activities that complement instruction.
- Student support services to provide assessment, advising, counseling, tutoring, financial assistance, and social and cultural activities for all students, including those with special needs.
- Promotion of cross-cultural understanding and appreciation through instructional and social activities that contribute to cultural awareness and interaction.
- Involvement of business, industry, and professional groups in planning and revising educational programs to meet workforce needs.
- An environment conducive to learning through an attractive physical campus and wellness oriented programs and services.
- Continuous assessment of programs and services and the utilization of results for improvement.
- Operation of the College within available fiscal resources to provide accountability to taxpayers of the District.

## VISION STATEMENT

San Antonio College will be nationally recognized for student success and best practices.



## VALUES

**Integrity:** By having the courage to act ethically, we build a culture of trust and respect.

**Communication:** We engage in open and transparent communication, information sharing and collaboration.

**Community:** We are committed to a joyful culture of learning and service where unity in diversity occurs through mutual respect and understanding.

**Academic Freedom:** We value creativity, growth and transformation through vigorous inquiry and a free exchange of ideas for all.

**Accountability:** We take responsibility for our actions and strive for continuous learning and improvement.

**Shared Governance:** We the employees and students are committed to work together to strengthen and enhance the college and the district. Shared Governance reflects mutual respect and trust among all members of the college community, thereby capitalizing on our collective intelligence

## OUTSTANDING FORMER STUDENTS



Dr. Maria Hernandez Ferrier

**2010-11** Cary Clack

**2009-10** Dr. Maria Hernandez Ferrier  
(President, Texas A&M-San Antonio)

**2008-09** Martha Salas (Heads Air Force  
Advocacy Program)

**2007-08** Justice Alma L. Lopez (Chief Justice,  
Texas Fourth Court of Appeals)

**2006-07** Ward Allen White III (Assistant Distric  
Attorney)

**2005 - 06** Dr. William Breit (Trinity University  
Professor Emeritus)

**2004-05** Dr. Joe W. Neal (Former President,  
Texas Partners of the Americas, Inc.) & Hector M  
Flores (LULAC President)

**2003-04** Dr. Tessa Pollack (Our Lady of the Lak  
University President) & Ana de Portela (Artist)

**2002-03** Norma S. Rodriguez (City Clerk) &  
Albert A. Ortiz (Chief of Police)

**2001-02** Dr. Rodolpho Sandoval (University  
Administrator) & Sara Kleban Radin (Judge)

**2000-01** Oscar G. Hernandez (Community  
Services Administrator)

**1999-00** Ciro D. Rodriguez (Congressman) & Dr  
James V. McLean (Veterinarian)

**1998-99** Dr. Martin Basaldua (Physician) &  
Marinella Garcia-Murillo (Community Relations  
Specialist)

**1997-98** Dr. Jesse T. Zapata (University  
Administrator & Dr. Cynthia G. Broderick (Publi  
School Educator)

**1996-97** Al A. Philippus (San Antonio Chief of  
Police) & Tino Duran (Publisher of La Prensa)

**1995-96** Francis R. Scobee (Challenger  
Astronaut) & Dr. Leo Sayavedra (University  
Administrator) & Dr. Robert L. Jimenez  
(Psychiatrist)

**1994-95** Steven C. Hilbig (Bexar County District  
Attorney) & Dr. Judith Ann Loreda (College  
Administrator)

**1993-94** William Sinkin (Banker) & Dr. Felix D.  
Almaraz (University Professor)

**1992-93** Patsy Torres (Entertainer)

**1991-92** Jesse Trevino (Arist)

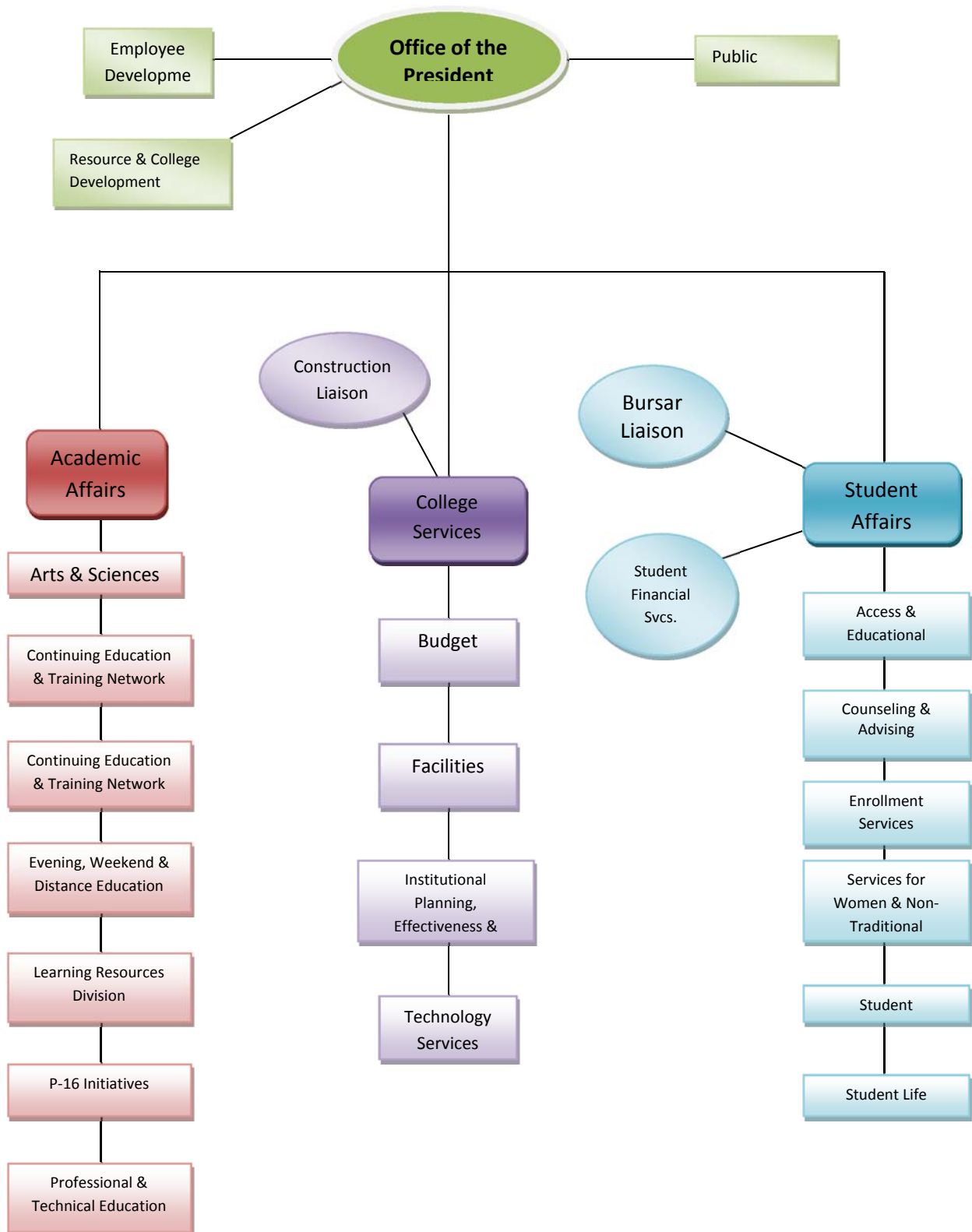
**1990-91** Bill Hayden (Founder/CEO CompuAdc  
& Diane Gonzales (Journalist)

**1989-90** Nancy Klepper (Public School Educat  
& Frank Gonzalez (Oceanographer)

**1988-89** Sarah Garrahan (Judge) & James R.  
Vasquez (Public School Superintendent)

**1987-88** Dr. Jerome Weynand (College Preside  
& Edward Prado (Judge)

# SAN ANTONIO COLLEGE ORGANIZATION CHART



**CONTENTS - STUDENT PROFILE**

**CONTENTS - STUDENT PROFILE.....12**

**Gender, Ethnicity, Age, Major, Hours Enrolled, Day vs. Evening.....13**

**TOP TEN ACADEMIC MAJORS .....14**

**TOP TEN PROFESSIONAL/TECHNICAL MAJORS .....14**

**TOP TEN FEEDER HIGH SCHOOLS .....14**

**TOP TEN ZIP CODES OF RESIDENCE .....15**

**TOP TEN COUNTIES OF RESIDENCE .....15**

**TOP TEN STATES OF RESIDENCE.....15**

**Student Objective in Attending San Antonio College .....16**

**Previous College Experience.....16**

**FINANCIAL AID AWARDS 2010-2011.....17**

**GRADE DISTRIBUTION – FALL 2010.....18**

**GRADE DISTRIBUTION TRENDS – FALL 2006-2010.....18**

**GRADE DISTRIBUTION TRENDS – DEVELOPMENTAL EDUCATION FALL 2006-2010.....19**

**SUMMARY DEGREE DATA .....20**

        GRADUATES BY CERTIFICATES & DEGREES AWARDED 2009-2010..... 20

        GRADUATES BY ETHNICITY 2009-2010 ..... 20

        CERTIFICATES & DEGREES AWARDED 2005-2006 TO 2009-2010 ..... 20

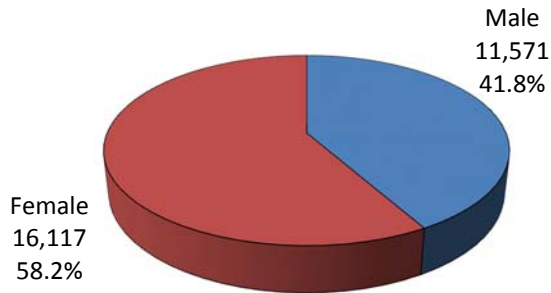
        GRADUATES BY ETHNICITY 2005-2006 TO 2009-2010..... 20

**STUDENT RETENTION BY DECLARED MAJOR.....21**

**FALL 2010**

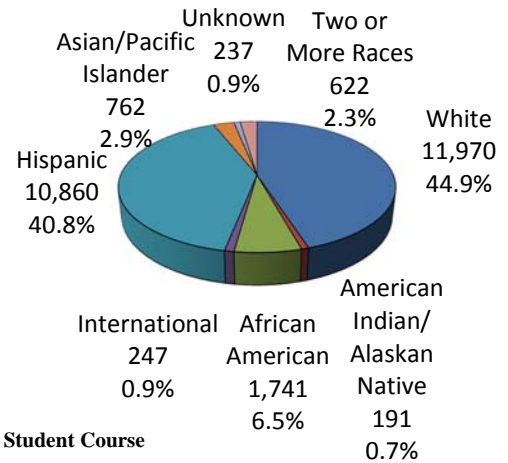
**Gender, Ethnicity, Age, Major, Hours Enrolled, Day vs. Evening**  
27,688 Students

**Gender**



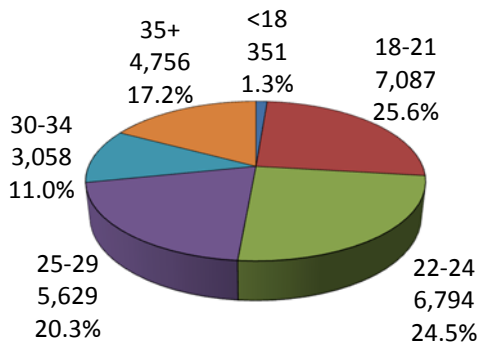
SOURCE: Student Course

**Ethnicity**



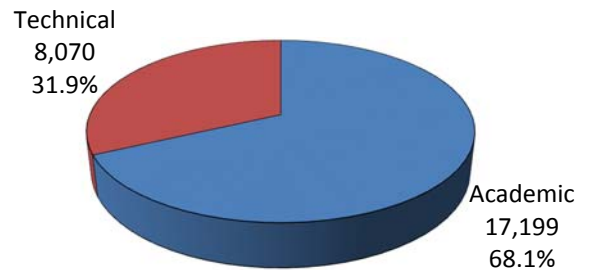
SOURCE: Student Course

**Age**



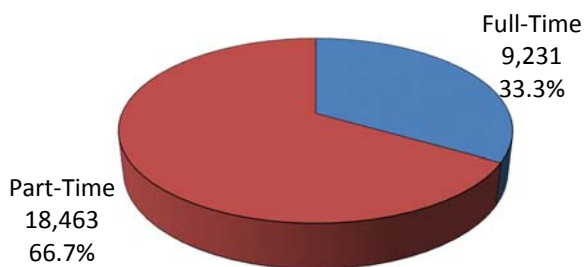
SOURCE: Student Course

**Course of Study**



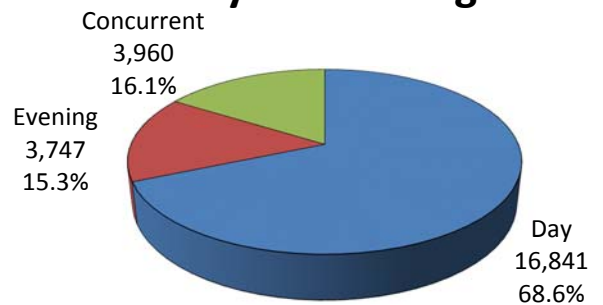
SOURCE: CBM001

**Full- vs. Part-Time**



SOURCE: Student Course

**Day vs. Evening**



SOURCE: Student Course

## TOP TEN ACADEMIC MAJORS

<i>MAJORS</i>	<i>NUMBER</i>
1. Liberal Arts	7222
2. Dual Credit	2266
3. Business Administration	1022
4. Psychology	779
5. Physical & Natural Science	762
6. Liberal Arts-Transfer Curricul	677
7. Criminal Justice	608
8. TX Teacher Cert 8-12,Other8-12	592
9. TX Teacher EC-4, 4-8, EC-12	526
10. Engineering	522

SOURCE: Student Course, CBM001

## TOP TEN PROFESSIONAL/TECHNICAL MAJORS

<i>MAJORS</i>	<i>NUMBER</i>
1. Pre-Nursing	1471
2. Business Management	647
3. Nursing	605
4. Computer Network Admin	228
5. Criminal Justice-Law Enforcemt	227
6. Computer Programming	224
7. Mortuary Science	210
8. Engineering Technology	178
9. Medical Assistant	176
10. Accounting Technology	173

SOURCE: Student Course, CBM001

## TOP TEN FEEDER HIGH SCHOOLS

<i>HIGH SCHOOL</i>	<i>NUMBER</i>
1. Winston Churchill High School	536
2. James Madison High School	505
3. Douglas MacArthur High School	486
4. Robert E Lee High School	459
5. Judson Senior High School	458
6. Thomas Jefferson High School	428
7. Theodore Roosevelt High School	410
8. Thomas A Edison High School	375
9. Ronald Reagan High School	331
10. Texas GED	315

SOURCE: CBM001

## TOP TEN ZIP CODES OF RESIDENCE

	<i>ZIP CODES</i>	<i>NUMBER</i>
1.	78247	1004
2.	78228	929
3.	78201	917
4.	78216	886
5.	78213	877
6.	78232	715
7.	78258	709
8.	78240	702
9.	78233	697
10.	78230	692

SOURCE: Student Contact

## TOP TEN COUNTIES OF RESIDENCE

	<i>COUNTIES</i>	<i>NUMBER</i>
1.	Bexar	21626
2.	Guadalupe	599
3.	Comal	574
4.	Kerr	225
5.	Wilson	128
6.	Kendall	111
7.	Medina	98
8.	Atascosa	70
9.	Bandera	62
10.	Harris	53

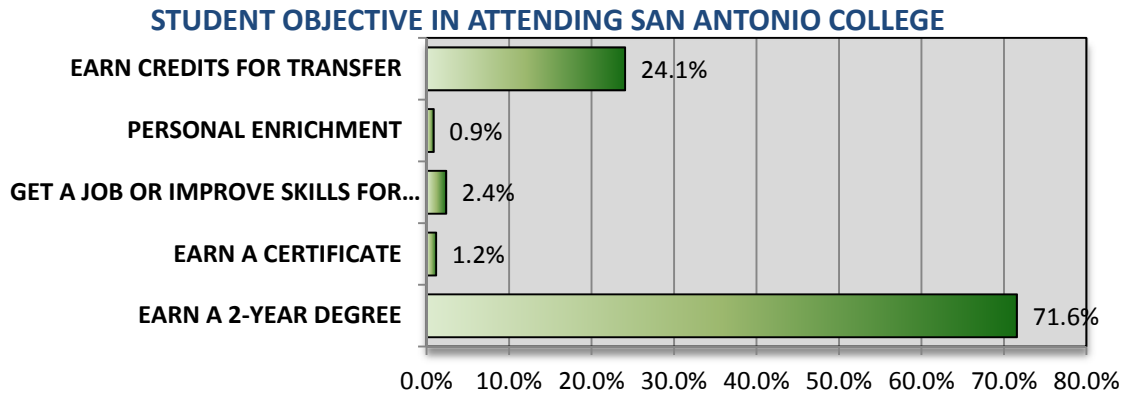
SOURCE: Student Contact

## TOP TEN STATES OF RESIDENCE

	<i>STATES</i>	<i>NUMBER</i>
1.	TX	24154
2.	CA	19
3.	FL	18
4.	GA	7
5.	MI	7
6.	TN	7
7.	NY	5
8.	LA	5
9.	IL	5
10.	NV	4

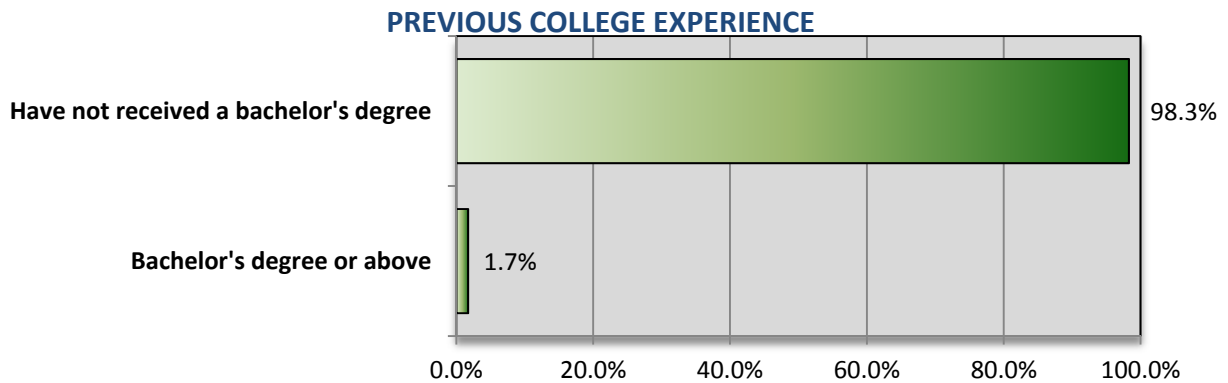
SOURCE: Student Contact

## Student Objective in Attending San Antonio College



SOURCE: CBM001

## Previous College Experience



SOURCE: PRODSTU0090, Student Course



## FINANCIAL AID AWARDS 2010-2011

CATEGORY	AMOUNT	# OF AWARDS
Pell Grant	\$27,151,662	10,237
Stafford Loan	\$12,498,356	3,491
Federal Work Study (State-CWS)	\$1,171,016	551
Supplemental Education Opportunity Grant (SEOG)	\$952,719	2,751
Scholarships		
State Incentive Grant (SSIG)		
Other State and Federal Grants		
Texas Public Education Grant (TPEG)	\$1,277,936	2,175
<b>TOTAL</b>		

### SCHOLARSHIPS AWARDED 2010-2011

Institutional/Endowed \$  
 Departmental \$  
 State \$  
 External \$

**Total Awarded** \$

Total number of scholarships awarded:

Scholarships are available from a variety of sources, both private and public. Listed below are types of scholarships available through San Antonio College.

- Institutional/Endowed
- Departmental
- State
- External

**Endowed scholarships-** awarded by ACCD. Contributions made to ACCD scholarship foundation by private donors. Applications are available at Student Financial Services.

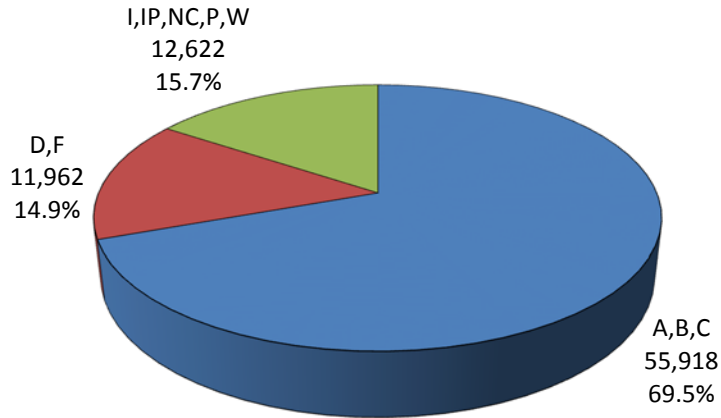
**Institutional scholarships-** awarded by Student Financial Services. Applications are available at Student Financial Services Office.

**Departmental scholarships-** awarded by departments. Private gifts donated to departments from various organizations. Awards usually based on major, GPA, community work. For additional information/applications, contact departments.

**State scholarships-** Early High School Graduates, Good Neighbor, and Professional Nursing available through the THECB. Awarded by Student Financial Services.

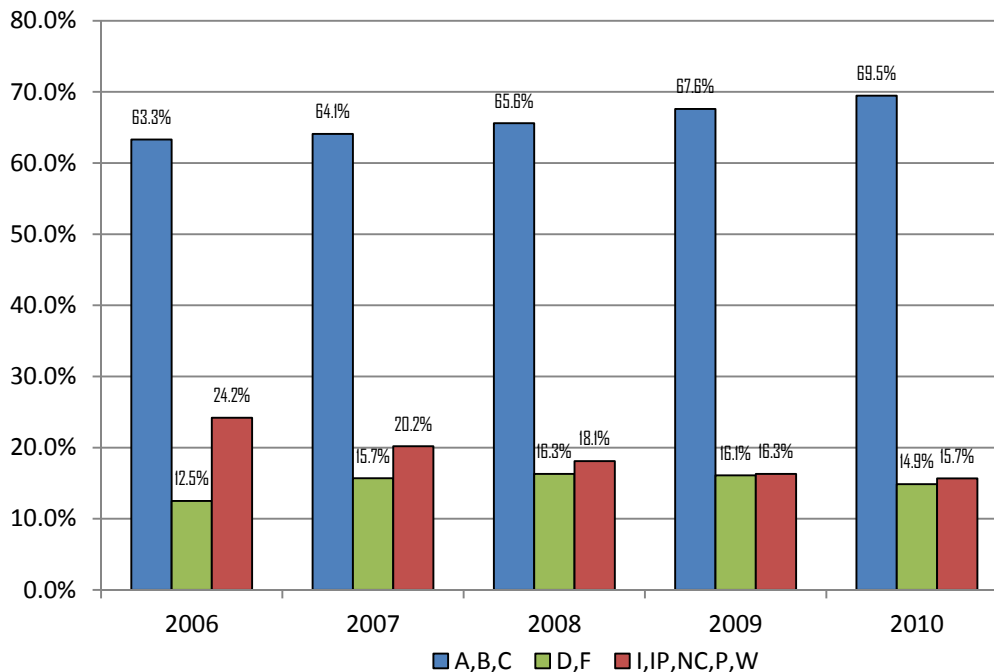
**External scholarships-** awarded by a variety of off-campus businesses/organizations for students attending San Antonio College.

## GRADE DISTRIBUTION – FALL 2010



## GRADE DISTRIBUTION TRENDS – FALL 2006-2010

	A	B	C	Productive Rate	D	F	Completion Rate	I	IP	NC	P	W	TOTAL
<b>2006</b>	16982 23.9%	16414 23.1%	116781 6.4%	45074 63.3%	3306 4.6%	5566 7.8%	53946 75.8%	0 0.0%	276 0.4%	61 0.1%	58 0.1%	16818 23.6%	71159 100.0%
<b>2007</b>	17098 24.1%	16692 23.5%	117181 6.5%	45508 64.1%	3659 5.2%	7447 10.5%	56614 79.8%	0 0.0%	412 0.6%	59 0.1%	50 0.1%	8924 19.5%	70957 100.0%
<b>2008</b>	18035 25.3%	16880 23.7%	11880 16.6%	46795 65.6%	3755 5.3%	7876 11.0%	58426 81.9%	0 0.0%	403 0.6%	18 0.0%	60 0.1%	12447 17.4%	71354 100.0%
<b>2009</b>	20979 27.0%	18540 23.9%	12960 16.7%	52479 67.6%	3836 4.9%	8679 11.2%	64994 83.7%	0 0.0%	455 0.6%	28 0.0%	63 0.1%	12088 15.6%	77628 100.0%
<b>2010</b>	23256 28.9%	19318 24.0%	13344 16.6%	55918 69.5%	4015 5.0%	7947 9.9%	67880 84.3%	0 0.0%	649 0.8%	0 0.0%	59 0.1%	11914 14.8%	80502 100.0%



SOURCE: Student Course

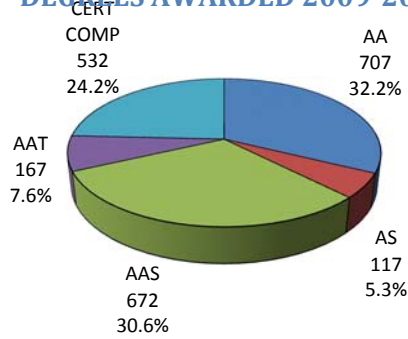
## GRADE DISTRIBUTION TRENDS – DEVELOPMENTAL EDUCATION FALL 2006-2010

	A	B	C	Productive Rate	D	F	Completion Rate	I	IP	NC	P	W	Total
<b>2006</b>													
<b>Engl</b>	233 13.0%	376 21.0%	344 19.2%	953 53.2%	67 3.7%	156 8.7%	1176 65.6%	0 0.0%	83 4.6%	0 0.0%	0 0.0%	534 29.8%	1793 100.0%
<b>Math</b>	649 9.5%	890 13.1%	1094 16.1%	2633 38.7%	502 7.4%	1082 15.9%	4217 61.9%	0 0.0%	95 1.4%	0 0.0%	0 0.0%	2500 36.7%	6812 100.0%
<b>Read</b>	191 9.0%	538 25.5%	554 26.2%	1283 60.7%	112 5.3%	118 5.6%	1513 71.6%	0 0.0%	30 1.4%	0 0.0%	0 0.0%	570 27.0%	2113 100.0%
<b>Total</b>	1073 10.0%	1804 16.8%	1992 18.6%	4869 45.4%	681 6.4%	1356 12.7%	6906 64.4%	0 0.0%	208 1.9%	0 0.0%	0 0.0%	3604 33.6%	10718 100.0%
<b>2007</b>													
<b>Engl</b>	231 13.4%	410 23.7%	276 16.0%	917 53.0%	69 4.0%	249 14.4%	1235 71.4%	0 0.0%	140 8.1%	0 0.0%	0 0.0%	354 20.5%	1729 100.0%
<b>Math</b>	658 10.9%	813 13.5%	980 16.2%	2451 40.6%	458 7.6%	1134 18.8%	4043 66.9%	0 0.0%	121 2.0%	0 0.0%	0 0.0%	1876 31.1%	6040 100.0%
<b>Read</b>	159 8.4%	501 26.4%	519 27.4%	1179 62.2%	118 6.2%	145 7.7%	1442 76.1%	0 0.0%	54 2.8%	0 0.0%	0 0.0%	399 21.1%	1895 100.0%
<b>Total</b>	1048 10.8%	1724 17.8%	1775 18.4%	4547 47.1%	645 6.7%	1528 15.8%	6720 69.5%	0 0.0%	315 3.3%	0 0.0%	0 0.0%	2629 27.2%	9664 100.0%
<b>2008</b>													
<b>Engl</b>	233 17.0%	296 21.6%	262 19.1%	791 57.7%	43 3.1%	175 12.8%	1009 73.6%	0 0.0%	101 7.4%	0 0.0%	0 0.0%	261 19.0%	1371 100.0%
<b>Math</b>	681 10.9%	840 13.5%	1057 16.9%	2578 41.3%	517 8.3%	1278 20.5%	4373 70.1%	0 0.0%	151 2.4%	0 0.0%	0 0.0%	1713 27.5%	6237 100.0%
<b>Read</b>	169 9.6%	525 29.9%	503 28.7%	1197 68.2%	105 6.0%	157 8.9%	1459 83.1%	0 0.0%	29 1.7%	0 0.0%	0 0.0%	267 15.2%	1755 100.0%
<b>Total</b>	1083 11.6%	1661 17.7%	1822 19.5%	4566 48.8%	665 7.1%	1610 1720.0%	6841 73.1%	0 0.0%	281 3.0%	0 0.0%	0 0.0%	2241 23.9%	9363 100.0%
<b>2009</b>													
<b>Engl</b>	297 16.4%	449 24.8%	349 19.3%	1095 60.5%	39 2.2%	196 10.8%	1330 73.4%	0 0.0%	170 9.4%	0 0.0%	0 0.0%	311 17.2%	1811 100.0%
<b>Math</b>	860 12.2%	1138 16.1%	1321 18.7%	3319 47.0%	554 7.8%	1413 20.0%	5286 74.9%	0 0.0%	175 2.5%	0 0.0%	0 0.0%	1599 22.6%	7060 100.0%
<b>Read</b>	220 11.2%	650 33.1%	552 28.1%	1422 72.5%	88 4.5%	104 5.3%	1614 82.3%	0 0.0%	63 3.2%	0 0.0%	0 0.0%	285 14.5%	1962 100.0%
<b>Total</b>	1377 12.7%	2237 20.6%	2222 20.5%	5836 53.9%	681 6.3%	1713 15.8%	8230 76.0%	0 0.0%	408 3.8%	0 0.0%	0 0.0%	2195 20.3%	10833 100.0%
<b>2010</b>													
<b>Engl</b>	345 16.4%	445 21.1%	464 22.0%	1254 59.5%	81 3.8%	207 9.8%	1542 73.2%	0 0.0%	194 9.2%	0 0.0%	0 0.0%	370 17.6%	2106 100.0%
<b>Math</b>	1058 15.4%	1210 17.6%	1318 19.2%	3586 52.2%	486 7.1%	1194 17.4%	5266 76.6%	0 0.0%	192 2.8%	0 0.0%	0 0.0%	1418 20.6%	6876 100.0%
<b>Read</b>	189 10.0%	553 29.3%	590 31.3%	1332 70.6%	124 6.6%	124 6.6%	1580 83.7%	0 0.0%	88 4.7%	0 0.0%	0 0.0%	220 11.7%	1888 100.0%
<b>Total</b>	1592 14.6%	2208 20.3%	2372 21.8%	6172 56.8%	691 6.4%	1525 14.0%	8388 77.2%	0 0.0%	474 4.4%	0 0.0%	0 0.0%	2008 18.5%	10870 100.0%

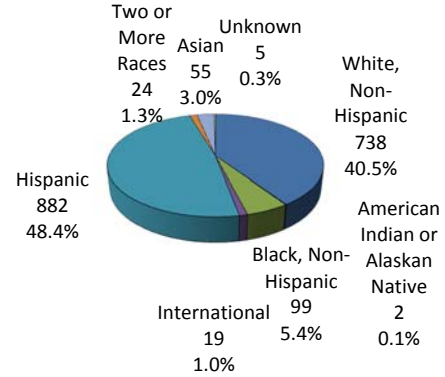
Source: Student Course

**SUMMARY DEGREE DATA**

**GRADUATES BY CERTIFICATES & DEGREES AWARDED 2009-2010**



**GRADUATES BY ETHNICITY 2009-2010**



TOTAL DEGREES: 2,195\*

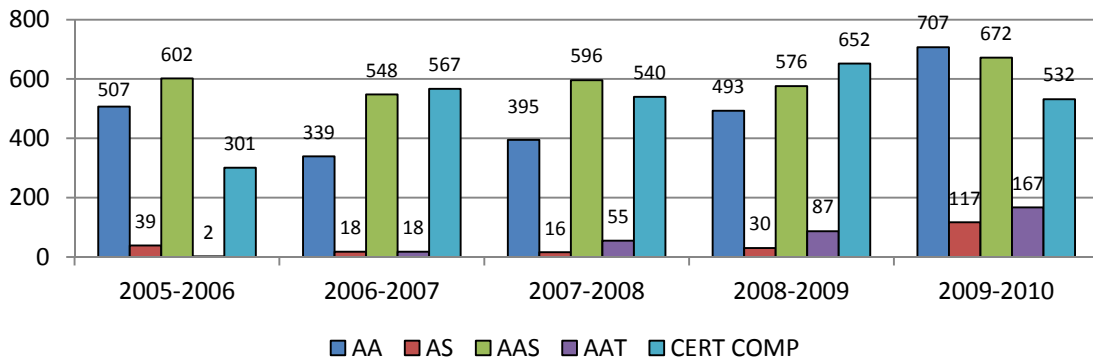
\*Also included are progress measures of students who have completed the core curriculum (CCC) and/or approved fields of study.

SOURCE: Graduation Report

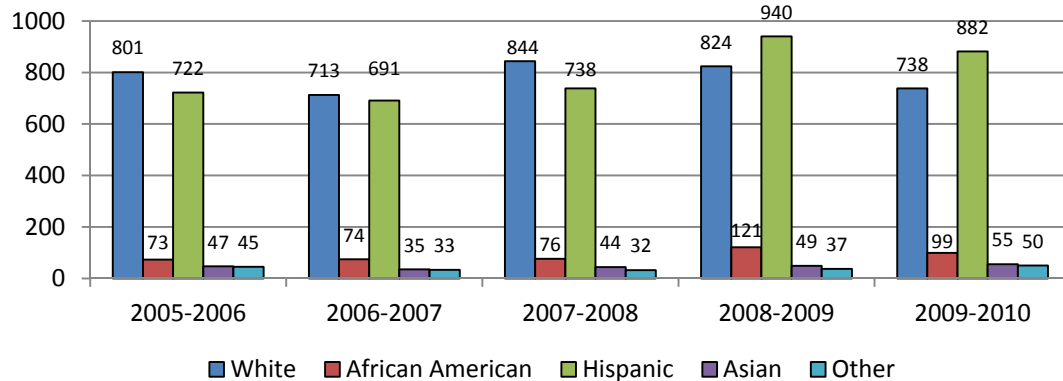
TOTAL GRADUATES 1,824\*

SOURCE: Graduation Report, Student Course

**CERTIFICATES & DEGREES AWARDED 2005-2006 TO 2009-2010**



**GRADUATES BY ETHNICITY 2005-2006 TO 2009-2010**



## STUDENT RETENTION BY DECLARED MAJOR

Source: Student Course, Graduation Report

Major Code	Major Title	Initial Fall Enrollment	Initial Fall Completion	Within Semester Completion Initial Fall	Percentage of Fall Completers Enrolled in Spring	Spring Enrollment	Spring Completion	Within Semester Completion Spring	Initial Fall Who Completed Spring Semester	Grad	Cert
0	Undeclared	1	1	100.0%	0.0%	0	0	0.0%	0.0%	0	0
ABRP	Auto Body Repair	1	1	100.0%	0.0%	0	0	0.0%	0.0%	0	0
ACAD	AutoCad	2	2	100.0%	0.0%	0	0	0.0%	0.0%	0	1
ACCA	Accounting Comp Applications	5	5	100.0%	60.0%	3	3	100.0%	60.0%	0	1
ACCT	Accounting	3	2	66.7%	0.0%	0	0	0.0%	0.0%	0	0
ACHT	Air Conditioning & Heating	13	9	69.2%	22.2%	2	1	50.0%	7.7%	0	0
ACIS	Accounting Information System	1	0	0.0%	0.0%	0	0	0.0%	0.0%	0	0
ACMA	Aircraft Mechanic Airframe	2	2	100.0%	50.0%	1	1	100.0%	50.0%	0	0
ACNT	Adv CISCO Networking Tech	4	2	50.0%	0.0%	0	0	0.0%	0.0%	0	0
ACRG	Air Conditioning Refrig Tech	1	0	0.0%	0.0%	0	0	0.0%	0.0%	0	0
ACRT	A+ Certification Preparation	1	1	100.0%	100.0%	1	1	100.0%	100.0%	0	0
ACSS	Air Conditioning Systems Serv	1	1	100.0%	0.0%	0	0	0.0%	0.0%	0	0
ACTA	Aircraft Technician Airframe	6	5	83.3%	20.0%	1	1	100.0%	16.7%	0	0
ACTC	Accounting Technician	50	44	88.0%	47.7%	21	18	85.7%	36.0%	0	6
ACTP	Aircraft Technician Powerplant	4	3	75.0%	0.0%	0	0	0.0%	0.0%	0	0
ADAS	Administrative Assistant	65	62	95.4%	58.1%	36	30	83.3%	46.2%	9	0
ADCT	ADCT Tech Prep ESC	3	2	66.7%	50.0%	1	1	100.0%	33.3%	0	0
ADFT	Architectural Drafting	1	1	100.0%	100.0%	1	1	100.0%	100.0%	0	0
ADOT	Administrative Office Technolo	4	4	100.0%	50.0%	2	2	100.0%	50.0%	0	0
ADST	Administrative Systems Tech	5	5	100.0%	60.0%	3	3	100.0%	60.0%	0	8
ADTA	Administrative Office Tech Ast	1	1	100.0%	0.0%	0	0	0.0%	0.0%	0	0
ADWT	Advanced Water Treatment	4	3	75.0%	66.7%	2	2	100.0%	50.0%	0	0

## STUDENT RETENTION BY DECLARED MAJOR

Source: Student Course, Graduation Report

Major Code	Major Title	Initial Fall Enrollment	Initial Fall Completion	Within Semester Completion Initial Fall	Percentage of Fall Completers Enrolled in Spring	Spring Enrollment	Spring Completion	Within Semester Completion Spring	Initial Fall Who Completed Spring Semester	Grad	Cert
AGRC	Agriculture	1	1	100.0%	0.0%	0	0	0.0%	0.0%	0	0
AGSC	Agricultural Sciences, General	1	1	100.0%	0.0%	0	0	0.0%	0.0%	0	0
AHTD	Allied Health Transfer Degree	29	24	82.8%	33.3%	8	6	75.0%	20.7%	0	0
AMSL	American Sign Language	53	48	90.6%	50.0%	24	21	87.5%	39.6%	2	0
ANTH	Anthropology	34	32	94.1%	21.9%	7	7	100.0%	20.6%	3	0
ARCH	Architecture	170	159	93.5%	18.2%	29	25	86.2%	14.7%	21	0
ARTS	Art	501	463	92.4%	60.0%	278	253	91.0%	50.5%	6	0
ASDC	Applied Science - Dual Credit	5	4	80.0%	0.0%	0	0	0.0%	0.0%	0	0
ASLI	American Sign Language-Interpr	140	135	96.4%	65.2%	88	85	96.6%	60.7%	7	0
ASLS	American Sign Language-Deaf	34	33	97.1%	63.6%	21	20	95.2%	58.8%	9	0
ASLT	ASL Trilingual Enhanced Cert	7	7	100.0%	28.6%	2	2	100.0%	28.6%	0	0
ATCH	Accounting Technology	173	162	93.6%	60.5%	98	89	90.8%	51.4%	12	0
AUTT	Automotive Technology	23	21	91.3%	33.3%	7	5	71.4%	21.7%	0	0
AVMG	Aviation Management	2	1	50.0%	0.0%	0	0	0.0%	0.0%	0	0
BCOM	Business Communications	22	21	95.5%	42.9%	9	8	88.9%	36.4%	0	0
BINT	International Business	3	2	66.7%	100.0%	2	2	100.0%	66.7%	0	0
BIOC	Biology-Chemistry	1	1	100.0%	0.0%	0	0	0.0%	0.0%	0	0
BIOL	Biology	102	87	85.3%	50.6%	44	41	93.2%	40.2%	0	0
BIOP	Biology/Pre-Professional	6	5	83.3%	80.0%	4	4	100.0%	66.7%	0	0
BIOS	Biological Sciences	199	176	88.4%	53.4%	94	87	92.6%	43.7%	6	0
BISP	International Business Special	1	1	100.0%	100.0%	1	1	100.0%	100.0%	0	0
BKFS	Banking & Financial Services	51	47	92.2%	42.6%	20	19	95.0%	37.3%	3	0

## STUDENT RETENTION BY DECLARED MAJOR

Source: Student Course, Graduation Report

Major Code	Major Title	Initial Fall Enrollment	Initial Fall Completion	Within Semester Completion Initial Fall	Percentage of Fall Completers Enrolled in Spring	Spring Enrollment	Spring Completion	Within Semester Completion Spring	Initial Fall Who Completed Spring Semester	Grad	Cert
BKPA	Baking and Pastry Arts	2	1	50.0%	0.0%	0	0	0.0%	0.0%	0	0
BMEN	Business Management - Entrepren	55	49	89.1%	8.2%	4	4	100.0%	7.3%	0	1
BMET	Bio-Medical Equipment Tech	4	4	100.0%	50.0%	2	2	100.0%	50.0%	0	0
BMGT	Business Management	647	595	92.0%	58.2%	346	313	90.5%	48.4%	12	2
BMIS	Business Admin-Mgmt Info Syste	24	12	50.0%	41.7%	5	5	100.0%	20.8%	0	0
BMRT	BMH-Radiologic Technology	1	0	0.0%	0.0%	1	1	100.0%	100.0%	0	0
BMTC	Business Management & Tech	10	10	100.0%	40.0%	4	3	75.0%	30.0%	0	0
BMUS	Music Business	32	28	87.5%	32.1%	9	8	88.9%	25.0%	6	0
BNKG	Banking	32	30	93.8%	56.7%	17	17	100.0%	53.1%	1	1
BPNR	Biology/Pre-Nursing	48	47	97.9%	31.9%	15	15	100.0%	31.3%	49	0
BPPH	Biology/Pre-Pharmacy	2	1	50.0%	100.0%	1	1	100.0%	50.0%	0	0
BSFF	Basic Firefighter	45	43	95.6%	30.2%	13	10	76.9%	22.2%	0	113
BUAD	Business Administration	1022	933	91.3%	55.2%	515	474	92.0%	46.4%	101	0
CADA	Computer Aided Drafting-Arch	7	7	100.0%	42.9%	3	3	100.0%	42.9%	0	0
CADM	CAD Enhanced Skills Mastry Cer	2	2	100.0%	0.0%	0	0	0.0%	0.0%	0	0
CADT	Computer Aided Transcription	1	1	100.0%	0.0%	0	0	0.0%	0.0%	0	0
CBMG	Construction Business Mgmt	2	2	100.0%	50.0%	1	1	100.0%	50.0%	0	0
CBTC	Computer Database Technician	6	6	100.0%	50.0%	3	2	66.7%	33.3%	0	0
CCAD	Child Care Administration	7	7	100.0%	14.3%	1	1	100.0%	14.3%	0	11
CCET	Civil & Construction Eng Tech	3	3	100.0%	0.0%	0	0	0.0%	0.0%	0	0
CDAN	Child Development Assoc (CDA)	6	6	100.0%	50.0%	3	1	33.3%	16.7%	0	5
CDAT	Child Development Assoc Trng	23	19	82.6%	63.2%	12	12	100.0%	52.2%	0	3

## STUDENT RETENTION BY DECLARED MAJOR

Source: Student Course, Graduation Report

Major Code	Major Title	Initial Fall Enrollment	Initial Fall Completion	Within Semester Completion Initial Fall	Percentage of Fall Completers Enrolled in Spring	Spring Enrollment	Spring Completion	Within Semester Completion Spring	Initial Fall Who Completed Spring Semester	Grad	Cert
CDBS	Computer Database Specialist	27	25	92.6%	72.0%	18	16	88.9%	59.3%	1	0
CDDT	Computer Aided Drafting & Desi	58	55	94.8%	45.5%	25	23	92.0%	39.7%	6	0
CDET	Computer Data Entry Technician	3	3	100.0%	33.3%	1	1	100.0%	33.3%	0	1
CDFT	Comp Aided Dftg-Drafting Engr	27	24	88.9%	62.5%	15	14	93.3%	51.9%	1	0
CDOP	Computer Aided Drafting Oper	9	7	77.8%	14.3%	1	1	100.0%	11.1%	0	4
CDST	Computer Desktop Support Tech	8	8	100.0%	0.0%	0	0	0.0%	0.0%	0	3
CDTC	Computer Aided Drafting Tech	3	3	100.0%	66.7%	2	2	100.0%	66.7%	0	0
CFOR	Computer Forensics	7	6	85.7%	16.7%	1	1	100.0%	14.3%	0	0
CHDS	Computer Help Desk Specialist	21	21	100.0%	38.1%	8	7	87.5%	33.3%	1	0
CHDT	Computer Help Desk Technician	3	2	66.7%	100.0%	2	2	100.0%	66.7%	0	2
CHDV	Child Development	42	35	83.3%	17.1%	6	6	100.0%	14.3%	1	2
CHEM	Chemistry	10	7	70.0%	28.6%	2	1	50.0%	10.0%	0	0
CHLT	Community Health	56	41	73.2%	29.3%	12	9	75.0%	16.1%	0	0
CJCS	Criminal Justice-Correctional	44	39	88.6%	56.4%	22	21	95.5%	47.7%	11	0
CJFH	Criminal Justice-Forensic Home	43	43	100.0%	16.3%	7	7	100.0%	16.3%	0	0
CJFR	Criminal Justice Forensics	147	133	90.5%	51.9%	69	67	97.1%	45.6%	4	4
CJLE	Criminal Justice-Law Enforcemnt	227	212	93.4%	55.7%	118	111	94.1%	48.9%	30	0
CLTH	Collision Technology	1	1	100.0%	100.0%	1	1	100.0%	100.0%	0	0
CMBK	Comic Book	1	1	100.0%	100.0%	1	1	100.0%	100.0%	0	0
CMCR	Computer Programming Micro Opt	1	1	100.0%	0.0%	0	0	0.0%	0.0%	0	0
CMMS	Communications	37	28	75.7%	14.3%	4	3	75.0%	8.1%	0	0
CMMT	Computer Maintenance Technolog	6	6	100.0%	33.3%	2	1	50.0%	16.7%	0	0



## STUDENT RETENTION BY DECLARED MAJOR

Source: Student Course, Graduation Report

Major Code	Major Title	Initial Fall Enrollment	Initial Fall Completion	Within Semester Completion Initial Fall	Percentage of Fall Completers Enrolled in Spring	Spring Enrollment	Spring Completion	Within Semester Completion Spring	Initial Fall Who Completed Spring Semester	Grad	Cert
CMPA	Computer Assistant	9	7	77.8%	71.4%	5	4	80.0%	44.4%	0	25
CMPO	Computer Operations	1	1	100.0%	0.0%	0	0	0.0%	0.0%	0	0
CMPS	Computer Science	73	62	84.9%	32.3%	20	18	90.0%	24.7%	0	0
CMST	Communication Studies	18	16	88.9%	50.0%	8	7	87.5%	38.9%	0	0
CNTA	Computer Network Admin	228	213	93.4%	60.1%	128	113	88.3%	49.6%	39	0
CNTW	Computer Network Administratio	1	1	100.0%	0.0%	0	0	0.0%	0.0%	0	0
COML	Community Leadership	2	2	100.0%	0.0%	0	0	0.0%	0.0%	0	0
COMM	Communication Arts	3	3	100.0%	66.7%	2	1	50.0%	33.3%	0	0
CPIS	Computer Information System	7	7	100.0%	0.0%	0	0	0.0%	0.0%	0	0
CPMO	Computer Programming Mainframe	1	1	100.0%	0.0%	0	0	0.0%	0.0%	3	0
CPSP	Computer Support	1	0	0.0%	0.0%	0	0	0.0%	0.0%	0	0
CRFT	Collision/Refinishing Tech	3	3	100.0%	0.0%	0	0	0.0%	0.0%	0	0
CRJT	Criminal Justice	608	559	91.9%	54.0%	302	279	92.4%	45.9%	51	0
CRSH	Clinical Research Coordinator	3	2	66.7%	0.0%	0	0	0.0%	0.0%	0	0
CRTE	Court Reporting-Rapid Text En	6	5	83.3%	80.0%	4	4	100.0%	66.7%	0	10
CRTS	Court Reporting-Transcription	4	4	100.0%	100.0%	4	4	100.0%	100.0%	0	9
CRTT	Court Reporting-Comp Aided Tra	23	23	100.0%	73.9%	17	17	100.0%	73.9%	3	0
CSAD	Computer Security Admin	70	61	87.1%	68.9%	42	40	95.2%	57.1%	10	1
CSCD	Corr Science-Chemical Dep Coun	3	3	100.0%	33.3%	1	1	100.0%	33.3%	0	0
CSNP	CISCO Certified Network Profes	2	1	50.0%	0.0%	0	0	0.0%	0.0%	0	0
CSNT	CISCO Certified Network Assoc	3	2	66.7%	100.0%	2	1	50.0%	33.3%	0	0
CSPC	Coding Specialist	1	1	100.0%	100.0%	1	1	100.0%	100.0%	0	0

## STUDENT RETENTION BY DECLARED MAJOR

Source: Student Course, Graduation Report

Major Code	Major Title	Initial Fall Enrollment	Initial Fall Completion	Within Semester Completion Initial Fall	Percentage of Fall Completers Enrolled in Spring	Spring Enrollment	Spring Completion	Within Semester Completion Spring	Initial Fall Who Completed Spring Semester	Grad	Cert
CTRN	Computer Programming	224	213	95.1%	60.1%	128	120	93.8%	53.6%	4	0
CTRP	Court Reporting	5	5	100.0%	20.0%	1	1	100.0%	20.0%	0	1
CULA	Culinary Arts	12	10	83.3%	60.0%	6	5	83.3%	41.7%	0	0
CULS	Culinary Studies	2	2	100.0%	50.0%	1	0	0.0%	0.0%	0	0
CVEG	Civil Engineering	2	2	100.0%	0.0%	0	0	0.0%	0.0%	0	0
DAAS	Drug/Alcohol Abuse-Addictin St	26	24	92.3%	12.5%	3	3	100.0%	11.5%	2	0
DACC	Drug/Alcohol Abuse Counseling	3	3	100.0%	33.3%	1	1	100.0%	33.3%	15	4
DANC	Dance	9	7	77.8%	42.9%	3	3	100.0%	33.3%	0	0
DART	Digital Art	3	2	66.7%	50.0%	1	1	100.0%	33.3%	0	0
DCAC	Basic DC/AC	2	1	50.0%	0.0%	0	0	0.0%	0.0%	0	0
DCET	Diesel Conctruction Equip Spec	2	0	0.0%	0.0%	1	0	0.0%	0.0%	0	0
DCSP	Documentation Coding Specialis	1	0	0.0%	0.0%	0	0	0.0%	0.0%	0	0
DDAM	Digital Design-Animation	20	20	100.0%	20.0%	4	4	100.0%	20.0%	2	0
DDGM	Digital Design-Game	1	1	100.0%	0.0%	0	0	0.0%	0.0%	0	0
DFTD	Drafting and Design	2	2	100.0%	50.0%	1	1	100.0%	50.0%	0	0
DGMS	Diagnostic Medical Sonography	11	9	81.8%	77.8%	7	5	71.4%	45.5%	0	0
DGPH	Digital Design-Graphic	125	121	96.8%	66.9%	81	73	90.1%	58.4%	13	0
DGSA	Digital Gaming,SIM& Cine Artis	1	0	0.0%	0.0%	0	0	0.0%	0.0%	0	0
DGSP	Digital Gaming, SIM& Cine Prog	1	0	0.0%	0.0%	0	0	0.0%	0.0%	0	0
DHET	Diesel/Heavy Equip Technology	5	5	100.0%	20.0%	1	0	0.0%	0.0%	0	0
DITR	Digital Design-Interactive	3	3	100.0%	0.0%	0	0	0.0%	0.0%	0	0
DKSP	Desktop Support Specialist	1	1	100.0%	0.0%	0	0	0.0%	0.0%	0	0

## STUDENT RETENTION BY DECLARED MAJOR

Source: Student Course, Graduation Report

Major Code	Major Title	Initial Fall Enrollment	Initial Fall Completion	Within Semester Completion Initial Fall	Percentage of Fall Completers Enrolled in Spring	Spring Enrollment	Spring Completion	Within Semester Completion Spring	Initial Fall Who Completed Spring Semester	Grad	Cert
DLBT	Dental Laboratory Tech	42	41	97.6%	65.9%	27	27	100.0%	64.3%	0	0
DLOG	Distribution Logistics Technol	4	3	75.0%	66.7%	2	1	50.0%	25.0%	0	0
DNTA	Dental Assisting	170	157	92.4%	66.9%	105	94	89.5%	55.3%	11	35
DPHT	Digital Photography	2	2	100.0%	50.0%	1	1	100.0%	50.0%	0	0
DRMA	Drama	92	86	93.5%	59.3%	51	50	98.0%	54.3%	5	0
DSGN	Design	2	2	100.0%	100.0%	2	0	0.0%	0.0%	0	0
DSTR	Dentistry	2	2	100.0%	0.0%	0	0	0.0%	0.0%	0	0
DUAC	Dual Credit	2267	2132	94.0%	95.5%	2035	1830	89.9%	80.7%	2	0
DUAH	Dual Credit Home-Schooled	47	47	100.0%	70.2%	33	31	93.9%	66.0%	0	0
DUAP	Dual Credit Private	6	5	83.3%	20.0%	1	0	0.0%	0.0%	0	0
DVCP	Digital Video & Cinema Prod	6	5	83.3%	40.0%	2	2	100.0%	33.3%	0	0
ECCT	Enhanced Computer Security Cer	3	3	100.0%	66.7%	2	2	100.0%	66.7%	0	0
ECEO	Engr Tech-Civil Engr Option	29	27	93.1%	22.2%	6	6	100.0%	20.7%	0	0
ECLL	Early Childhood:Lang & Literac	1	1	100.0%	0.0%	0	0	0.0%	0.0%	0	0
ECON	Economics	6	5	83.3%	20.0%	1	1	100.0%	16.7%	0	0
ECSP	Early Childhood Specialization	9	5	55.6%	0.0%	0	0	0.0%	0.0%	0	0
ECST	Early Childhood Studies	167	149	89.2%	63.8%	95	83	87.4%	49.7%	11	18
EDUC	Education	30	23	76.7%	26.1%	6	5	83.3%	16.7%	0	0
EGDT	Engineering Drafting Tech I	1	0	0.0%	0.0%	1	1	100.0%	100.0%	0	0
EGRT	Engineering Technology	178	168	94.4%	58.9%	99	92	92.9%	51.7%	2	2
EIND	Electronics Technology-Industr	2	2	100.0%	0.0%	0	0	0.0%	0.0%	2	0
ELEC	Electrical Engineering	2	2	100.0%	0.0%	0	0	0.0%	0.0%	0	0

## STUDENT RETENTION BY DECLARED MAJOR

Source: Student Course, Graduation Report

Major Code	Major Title	Initial Fall Enrollment	Initial Fall Completion	Within Semester Completion Initial Fall	Percentage of Fall Completers Enrolled in Spring	Spring Enrollment	Spring Completion	Within Semester Completion Spring	Initial Fall Who Completed Spring Semester	Grad	Cert
ELET	Electrical Trades	7	6	85.7%	0.0%	0	0	0.0%	0.0%	0	0
EMDS	Emergency Medical Services	94	82	87.2%	65.9%	54	52	96.3%	55.3%	7	0
EMHS	Emergency Mgt Admin/Homeland	7	6	85.7%	33.3%	2	1	50.0%	14.3%	2	0
EMPP	EMT Paramedic Program	1	0	0.0%	0.0%	0	0	0.0%	0.0%	0	1
EMTB	Emergency Medical Tech Basic	49	44	89.8%	31.8%	14	13	92.9%	26.5%	0	5
EMTI	EMT - Intermediate	2	2	100.0%	50.0%	1	1	100.0%	50.0%	0	0
EMTP	EMT - Paramedic	7	6	85.7%	16.7%	1	1	100.0%	14.3%	0	3
ENCT	Entrepreneurship Certificate	1	1	100.0%	0.0%	0	0	0.0%	0.0%	0	0
ENGL	English	274	251	91.6%	58.2%	146	133	91.1%	48.5%	15	0
ENGR	Engineering	522	452	86.6%	61.9%	280	259	92.5%	49.6%	25	0
ENSE	Earth Sciences & Nat Energy R	1	1	100.0%	0.0%	0	0	0.0%	0.0%	0	0
ENVR	Environmental Studies	1	1	100.0%	0.0%	0	0	0.0%	0.0%	0	0
ETCH	Electronic Tech	55	52	94.5%	42.3%	22	21	95.5%	38.2%	0	0
ETCM	Electronics Technology-Communi	6	5	83.3%	60.0%	3	3	100.0%	50.0%	1	0
ETCP	Electronics Technology-Compute	23	20	87.0%	60.0%	12	12	100.0%	52.2%	1	0
ETHN	Engineering Technician	19	17	89.5%	41.2%	7	7	100.0%	36.8%	0	0
ETSP	8-12 Specialization	13	13	100.0%	38.5%	5	4	80.0%	30.8%	0	0
EVSC	Environmental Science	3	2	66.7%	50.0%	1	1	100.0%	33.3%	0	0
FAAT	Fine Arts-Art	8	8	100.0%	50.0%	4	4	100.0%	50.0%	0	0
FADR	Fine Arts-Drama	2	2	100.0%	100.0%	2	2	100.0%	100.0%	0	0
FAEG	Fine Arts-English	5	4	80.0%	25.0%	1	1	100.0%	20.0%	0	0
FAHU	Fine Arts & Humanities	1	1	100.0%	0.0%	0	0	0.0%	0.0%	0	0

## STUDENT RETENTION BY DECLARED MAJOR

Source: Student Course, Graduation Report

Major Code	Major Title	Initial Fall Enrollment	Initial Fall Completion	Within Semester Completion Initial Fall	Percentage of Fall Completers Enrolled in Spring	Spring Enrollment	Spring Completion	Within Semester Completion Spring	Initial Fall Who Completed Spring Semester	Grad	Cert
FAIV	Fire & Arson Investigation	21	21	100.0%	47.6%	10	9	90.0%	42.9%	0	0
FAMU	Fine Arts-Music	3	2	66.7%	50.0%	1	1	100.0%	33.3%	0	0
FFMG	Finance and Financial Mgt	4	4	100.0%	25.0%	1	1	100.0%	25.0%	0	0
FINA	Financial Analysis	1	1	100.0%	0.0%	0	0	0.0%	0.0%	0	2
FLNG	Foreign Languages	6	6	100.0%	33.3%	2	1	50.0%	16.7%	0	0
FLSP	Foreign Language (Spanish)	3	3	100.0%	0.0%	0	0	0.0%	0.0%	0	0
FNMG	Financial Management	35	32	91.4%	62.5%	20	18	90.0%	51.4%	1	2
FSAI	Fire Science-Arson Investigati	7	7	100.0%	71.4%	5	5	100.0%	71.4%	0	0
FSCI	Fire Science	103	98	95.1%	51.0%	50	49	98.0%	47.6%	15	0
FSFI	Fire Science-Fire Inspector	4	4	100.0%	25.0%	1	1	100.0%	25.0%	0	0
FSHS	Fire Science/Fire Fighting Hom	52	48	92.3%	47.9%	23	22	95.7%	42.3%	0	0
FSRV	Financial Services Industry	7	7	100.0%	57.1%	4	4	100.0%	57.1%	0	3
FUNL	Funeral Directing	20	19	95.0%	42.1%	8	7	87.5%	35.0%	0	10
GAEG	Graphic Arts-Electronic Graphi	4	4	100.0%	0.0%	0	0	0.0%	0.0%	0	0
GAIG	Graphic Arts-Interactive Graph	9	9	100.0%	44.4%	4	4	100.0%	44.4%	0	0
GAME	Game Programming	12	11	91.7%	54.5%	6	6	100.0%	50.0%	0	0
GAPG	Graphic Arts-Print Graphics Op	15	14	93.3%	42.9%	6	4	66.7%	26.7%	0	0
GATE	Gateway to College	42	37	88.1%	48.6%	18	12	66.7%	28.6%	0	0
GBMT	Business & Management, General	5	4	80.0%	0.0%	0	0	0.0%	0.0%	0	0
GBUS	General Business	2	1	50.0%	100.0%	1	0	0.0%	0.0%	0	0
GENE	EC-6 Generalist	13	10	76.9%	0.0%	0	0	0.0%	0.0%	0	0
GEOI	Geographic Info Systems	42	40	95.2%	37.5%	15	14	93.3%	33.3%	3	1

## STUDENT RETENTION BY DECLARED MAJOR

Source: Student Course, Graduation Report

Major Code	Major Title	Initial Fall Enrollment	Initial Fall Completion	Within Semester Completion Initial Fall	Percentage of Fall Completers Enrolled in Spring	Spring Enrollment	Spring Completion	Within Semester Completion Spring	Initial Fall Who Completed Spring Semester	Grad	Cert
GEOL	Geology	6	6	100.0%	16.7%	1	1	100.0%	16.7%	0	0
GERO	Gerontological Services	1	1	100.0%	100.0%	1	1	100.0%	100.0%	0	0
GMGT	General Management	1	1	100.0%	0.0%	0	0	0.0%	0.0%	0	0
GMPD	Game Development-Production	4	4	100.0%	25.0%	1	0	0.0%	0.0%	0	0
GMPG	Game Development-Programming	1	1	100.0%	100.0%	1	1	100.0%	100.0%	0	0
GNUR	Nursing, General	15	13	86.7%	23.1%	3	2	66.7%	13.3%	0	0
GOVN	Government	1	1	100.0%	0.0%	0	0	0.0%	0.0%	0	0
GSAA	General Studies - AA	22	19	86.4%	15.8%	3	2	66.7%	9.1%	0	0
GSAS	General Studies - AS	18	15	83.3%	26.7%	4	4	100.0%	22.2%	0	0
GSCI	General Science	1	1	100.0%	100.0%	1	1	100.0%	100.0%	0	0
HACJ	Human Serv-Addiction Counsel	1	1	100.0%	0.0%	0	0	0.0%	0.0%	0	0
HACS	Heating & Air Conditioning Spe	3	2	66.7%	50.0%	1	1	100.0%	33.3%	0	0
HBLD	Home Building	3	3	100.0%	33.3%	1	1	100.0%	33.3%	0	0
HBTC	Home Building Technology	1	1	100.0%	0.0%	0	0	0.0%	0.0%	0	0
HCMG	Health Care Management	3	2	66.7%	100.0%	2	2	100.0%	66.7%	0	0
HEMG	Hospitality Event Mgmt	2	2	100.0%	100.0%	2	2	100.0%	100.0%	0	0
HIST	History	48	40	83.3%	70.0%	28	25	89.3%	52.1%	5	0
HITC	Health Information Technology	2	2	100.0%	0.0%	0	0	0.0%	0.0%	0	0
HLTC	Histologic Technician	1	1	100.0%	100.0%	1	0	0.0%	0.0%	0	0
HLTH	Health	14	10	71.4%	10.0%	1	1	100.0%	7.1%	0	0
HMG	Hotel Management	1	0	0.0%	0.0%	0	0	0.0%	0.0%	0	0
HRMG	Human Resources Management	51	46	90.2%	52.2%	24	22	91.7%	43.1%	6	9

## STUDENT RETENTION BY DECLARED MAJOR

*Source: Student Course, Graduation Report*

Major Code	Major Title	Initial Fall Enrollment	Initial Fall Completion	Within Semester Completion Initial Fall	Percentage of Fall Completers Enrolled in Spring	Spring Enrollment	Spring Completion	Within Semester Completion Spring	Initial Fall Who Completed Spring Semester	Grad	Cert
HRTB	Human Resources Tech Basic	3	3	100.0%	0.0%	0	0	0.0%	0.0%	0	0
HRTC	Human Resources Technician	3	3	100.0%	0.0%	0	0	0.0%	0.0%	0	0
HSAA	Human Services-Alcohol Abuse	11	11	100.0%	63.6%	7	7	100.0%	63.6%	0	0
HSCP	Human Services-Counseling Psyc	52	44	84.6%	22.7%	10	10	100.0%	19.2%	2	0
HSDA	Human Services-Drug/Alcohol	10	9	90.0%	11.1%	1	1	100.0%	10.0%	4	3
HSEC	Homeland Security Administrati	4	4	100.0%	75.0%	3	2	66.7%	50.0%	0	3
HSRV	Human Services	35	30	85.7%	26.7%	8	8	100.0%	22.9%	0	0
HSSA	Human Services-Addiction Studi	12	11	91.7%	63.6%	7	7	100.0%	58.3%	0	0
HSUB	Human Services-Substance Abuse	2	1	50.0%	100.0%	1	1	100.0%	50.0%	0	2
HTPD	Health Professions Degree	12	11	91.7%	36.4%	4	4	100.0%	33.3%	0	0
HUMN	Humanities	5	4	80.0%	0.0%	0	0	0.0%	0.0%	0	0
HZMR	Hazmat Response Technician	3	3	100.0%	0.0%	0	0	0.0%	0.0%	0	0
HZRP	Hazmat Response Training	15	14	93.3%	7.1%	1	1	100.0%	6.7%	0	0
IASC	Information Assurance & Securi	1	1	100.0%	0.0%	0	0	0.0%	0.0%	0	0
ICAR	Invasive Cardiovascular Tech	1	1	100.0%	100.0%	1	1	100.0%	100.0%	0	0
ICMM	Internet Commerce	1	0	0.0%	0.0%	0	0	0.0%	0.0%	0	0
INAS	Instructional Assistant	1	1	100.0%	0.0%	0	0	0.0%	0.0%	0	0
INDC	Interdisciplinary Studies	1	1	100.0%	0.0%	0	0	0.0%	0.0%	0	0
INST	International Studies	58	55	94.8%	50.9%	28	25	89.3%	43.1%	4	8
ISPR	Inter Spanish II-Protective Se	1	1	100.0%	0.0%	0	0	0.0%	0.0%	0	0
ITBM	Int'l Business Management	16	14	87.5%	21.4%	3	3	100.0%	18.8%	0	0
ITDC	Infant and Toddler Care	7	7	100.0%	14.3%	1	1	100.0%	14.3%	0	0

## STUDENT RETENTION BY DECLARED MAJOR

Source: Student Course, Graduation Report

Major Code	Major Title	Initial Fall Enrollment	Initial Fall Completion	Within Semester Completion Initial Fall	Percentage of Fall Completers Enrolled in Spring	Spring Enrollment	Spring Completion	Within Semester Completion Spring	Initial Fall Who Completed Spring Semester	Grad	Cert
ITSC	Information Technology Securit	16	15	93.8%	60.0%	9	9	100.0%	56.3%	0	43
ITWB	ITSA Web/Programming	1	1	100.0%	0.0%	0	0	0.0%	0.0%	0	0
JOUR	Journalism	138	129	93.5%	58.9%	76	70	92.1%	50.7%	2	0
KINE	Kinesiology	70	53	75.7%	24.5%	13	12	92.3%	17.1%	0	0
LAAS	Legal Administrative Asst Cert	6	4	66.7%	100.0%	4	3	75.0%	50.0%	0	0
LADC	Liberal Arts-Dual Credit	108	104	96.3%	73.1%	76	74	97.4%	68.5%	0	0
LATC	Liberal Arts-Transfer Curricul	677	632	93.4%	57.4%	363	334	92.0%	49.3%	66	0
LAW	Law	2	2	100.0%	50.0%	1	1	100.0%	50.0%	0	0
LAWE	Law Enforcement	15	15	100.0%	20.0%	3	3	100.0%	20.0%	5	26
LBAT	Liberal Arts	7222	6545	90.6%	63.3%	4140	3330	80.4%	46.1%	335	0
LBRT	Library Technology	1	1	100.0%	0.0%	0	0	0.0%	0.0%	0	0
LBST	Labor Studies	2	1	50.0%	100.0%	1	1	100.0%	50.0%	0	5
LGAA	Legal Administrative Assistant	2	1	50.0%	100.0%	1	1	100.0%	50.0%	0	0
LGAL	Legal Assisting	4	2	50.0%	100.0%	2	0	0.0%	0.0%	0	0
LGCT	Logistics Management Cert	1	0	0.0%	0.0%	0	0	0.0%	0.0%	0	0
LGSC	Legal Secretarial	1	0	0.0%	0.0%	0	0	0.0%	0.0%	0	0
LHIS	Liberal Studies-History	1	0	0.0%	0.0%	0	0	0.0%	0.0%	0	0
LIBS	Liberal Studies	82	63	76.8%	34.9%	22	19	86.4%	23.2%	0	0
LNHM	Long Term Care Nursing Home Ad	1	1	100.0%	0.0%	0	0	0.0%	0.0%	0	0
LPPS	Leadership-Public Service	4	4	100.0%	25.0%	1	1	100.0%	25.0%	0	8
LSHS	Landscape and Horticulture Sci	2	2	100.0%	100.0%	2	2	100.0%	100.0%	0	0
LVNP	LVN to ADN Mobility Program	46	37	80.4%	32.4%	12	8	66.7%	17.4%	0	0



## STUDENT RETENTION BY DECLARED MAJOR

Source: Student Course, Graduation Report

Major Code	Major Title	Initial Fall Enrollment	Initial Fall Completion	Within Semester Completion Initial Fall	Percentage of Fall Completers Enrolled in Spring	Spring Enrollment	Spring Completion	Within Semester Completion Spring	Initial Fall Who Completed Spring Semester	Grad	Cert
MATH	Mathematics	122	108	88.5%	44.4%	48	44	91.7%	36.1%	3	0
MCEG	Mechanical Engineering	2	2	100.0%	50.0%	1	1	100.0%	50.0%	0	0
MCHT	Machinist/Machine Technologist	2	1	50.0%	0.0%	0	0	0.0%	0.0%	0	0
MCSA	Microsoft Cert Systems Admin	2	1	50.0%	0.0%	0	0	0.0%	0.0%	0	0
MDAA	Medical Administrative Asst	2	2	100.0%	100.0%	2	1	50.0%	50.0%	0	0
MDAT	Medical Assistant	176	164	93.2%	59.1%	97	92	94.8%	52.3%	16	23
MDLT	Medical Laboratory Tech	1	1	100.0%	100.0%	1	1	100.0%	100.0%	0	0
MDTC	Multimedia Technology	8	6	75.0%	16.7%	1	1	100.0%	12.5%	0	0
MEDC	Medicine	8	8	100.0%	50.0%	4	4	100.0%	50.0%	0	0
MEDT	Medical Technology	2	2	100.0%	0.0%	0	0	0.0%	0.0%	0	0
MEGT	Mechanical Engineering Tech	1	1	100.0%	0.0%	0	0	0.0%	0.0%	0	0
MGMT	Management	4	4	100.0%	25.0%	1	1	100.0%	25.0%	0	0
MGRI	Magnetic Resonance Imaging	1	1	100.0%	0.0%	0	0	0.0%	0.0%	0	0
MHTC	Mental Health Technology	1	1	100.0%	0.0%	0	0	0.0%	0.0%	1	0
MKMT	Marketing Management	90	85	94.4%	52.9%	45	40	88.9%	44.4%	2	0
MMSP	Multimedia Specialist	1	0	0.0%	0.0%	0	0	0.0%	0.0%	0	0
MOAA	Medical Office Administrative	37	30	81.1%	53.3%	16	14	87.5%	37.8%	0	0
MORT	Mortuary Science	210	196	93.3%	64.3%	126	117	92.9%	55.7%	9	0
MOSP	Microsoft Office Specialist	7	5	71.4%	40.0%	2	1	50.0%	14.3%	0	0
MRKT	Marketing	1	1	100.0%	0.0%	0	0	0.0%	0.0%	0	1
MTRS	Medical Transcription Specials	11	10	90.9%	20.0%	2	2	100.0%	18.2%	0	8
MUSI	Music	336	312	92.9%	63.8%	199	183	92.0%	54.5%	6	0

## STUDENT RETENTION BY DECLARED MAJOR

Source: Student Course, Graduation Report

Major Code	Major Title	Initial Fall Enrollment	Initial Fall Completion	Within Semester Completion Initial Fall	Percentage of Fall Completers Enrolled in Spring	Spring Enrollment	Spring Completion	Within Semester Completion Spring	Initial Fall Who Completed Spring Semester	Grad	Cert
MUST	Music Technology	2	1	50.0%	0.0%	0	0	0.0%	0.0%	0	0
MXAS	Mexican American Studies	1	1	100.0%	100.0%	1	1	100.0%	100.0%	0	0
NADN	Network Administrator	9	7	77.8%	14.3%	1	1	100.0%	11.1%	0	0
NBIO	Natural Sciences-Biology	5	3	60.0%	33.3%	1	0	0.0%	0.0%	0	0
NCHM	Natural Sciences-Chemistry	3	2	66.7%	0.0%	0	0	0.0%	0.0%	0	0
NDSK	Non-Degree Seeker	16	11	68.8%	0.0%	0	0	0.0%	0.0%	0	0
NETW	Network Administration	4	3	75.0%	66.7%	2	2	100.0%	50.0%	0	0
NMCM	New Media Communications	5	5	100.0%	60.0%	3	3	100.0%	60.0%	0	0
NMDA	New Media Arts	6	4	66.7%	50.0%	2	1	50.0%	16.7%	0	0
NNTC	Nanotechnology	4	3	75.0%	33.3%	1	0	0.0%	0.0%	0	0
NPNP	Network Professional:Network +	1	1	100.0%	0.0%	0	0	0.0%	0.0%	0	0
NRRN	Nursing (RN)	2	1	50.0%	100.0%	1	1	100.0%	50.0%	0	0
NRSP	Nursing (Degree Program)	5	4	80.0%	50.0%	2	1	50.0%	20.0%	0	0
NSAD	Network Security Administrator	4	3	75.0%	33.3%	1	1	100.0%	25.0%	0	0
NURF	Nursing (4-Year Degree)	34	33	97.1%	6.1%	2	2	100.0%	5.9%	0	0
NURS	Nursing	605	592	97.9%	62.2%	368	352	95.7%	58.2%	309	0
NURT	Nutrition	9	9	100.0%	88.9%	8	8	100.0%	88.9%	0	0
OPMG	Operations Management	2	2	100.0%	100.0%	2	1	50.0%	50.0%	0	0
ORAC	Oracle	1	1	100.0%	0.0%	0	0	0.0%	0.0%	0	1
OSHI	OSHA Tech I	16	15	93.8%	13.3%	2	2	100.0%	12.5%	0	0
OSHM	OSHA Management	15	14	93.3%	28.6%	4	4	100.0%	26.7%	5	5
OTAS	Occupational Therapy Assistant	10	9	90.0%	33.3%	3	2	66.7%	20.0%	0	0

## STUDENT RETENTION BY DECLARED MAJOR

Source: Student Course, Graduation Report

Major Code	Major Title	Initial Fall Enrollment	Initial Fall Completion	Within Semester Completion Initial Fall	Percentage of Fall Completers Enrolled in Spring	Spring Enrollment	Spring Completion	Within Semester Completion Spring	Initial Fall Who Completed Spring Semester	Grad	Cert
PADM	Public Administration	45	41	91.1%	68.3%	28	28	100.0%	62.2%	7	0
PCSK	Personal Computer Skills	2	2	100.0%	0.0%	0	0	0.0%	0.0%	0	0
PDST	Pre-Dentistry	14	9	64.3%	33.3%	3	0	0.0%	0.0%	0	0
PENG	Pre-Engineering	5	3	60.0%	100.0%	3	3	100.0%	60.0%	0	0
PGAE	Power Generation & Alt Energy	1	0	0.0%	0.0%	0	0	0.0%	0.0%	0	0
PHAR	Pharmacy	7	7	100.0%	0.0%	0	0	0.0%	0.0%	0	0
PHCR	Pre-Health Careers	2	1	50.0%	0.0%	0	0	0.0%	0.0%	0	0
PHED	Physical Education	2	1	50.0%	0.0%	0	0	0.0%	0.0%	0	0
PHIL	Philosophy	5	5	100.0%	0.0%	0	0	0.0%	0.0%	0	0
PHOT	Photography	204	191	93.6%	58.6%	112	98	87.5%	48.0%	9	0
PHSC	Physical Sciences, General	1	1	100.0%	0.0%	0	0	0.0%	0.0%	0	0
PHYS	Physics	3	2	66.7%	0.0%	0	0	0.0%	0.0%	0	0
PHYT	Physical Therapy	8	8	100.0%	37.5%	3	2	66.7%	25.0%	0	0
PLAW	Pre-Law	7	6	85.7%	16.7%	1	1	100.0%	14.3%	0	0
PLGL	Paralegal Studies	99	93	93.9%	69.9%	65	62	95.4%	62.6%	14	0
PLMT	Plumbing Trades	1	1	100.0%	0.0%	0	0	0.0%	0.0%	0	0
PMED	Pre-Medicine	69	54	78.3%	29.6%	16	8	50.0%	11.6%	0	0
PNLA	Paraleg Stud:Non-Lawyer Advoca	2	2	100.0%	50.0%	1	1	100.0%	50.0%	0	0
PNSC	Physical & Natural Science	763	719	94.2%	25.3%	182	157	86.3%	20.6%	30	0
PNUR	Pre-Nursing	1471	1365	92.8%	24.8%	338	303	89.6%	20.6%	0	0
POLS	Political Science	135	126	93.3%	55.6%	70	66	94.3%	48.9%	3	0
POST	Postal Administration	1	1	100.0%	100.0%	1	1	100.0%	100.0%	0	0

## STUDENT RETENTION BY DECLARED MAJOR

Source: Student Course, Graduation Report

Major Code	Major Title	Initial Fall Enrollment	Initial Fall Completion	Within Semester Completion Initial Fall	Percentage of Fall Completers Enrolled in Spring	Spring Enrollment	Spring Completion	Within Semester Completion Spring	Initial Fall Who Completed Spring Semester	Grad	Cert
PPHM	Pre-Pharmacy	24	15	62.5%	33.3%	5	3	60.0%	12.5%	0	0
PPIL	Professional Pilot	4	4	100.0%	0.0%	0	0	0.0%	0.0%	0	0
PPNR	Pre-Nursing (Pre-Adm Status)	99	75	75.8%	12.0%	9	9	100.0%	9.1%	0	0
PRMT	Pharmacy Technology	11	7	63.6%	28.6%	2	0	0.0%	0.0%	0	0
PSWK	Pre-Social Work	13	10	76.9%	40.0%	4	3	75.0%	23.1%	0	0
PSYC	Psychology	779	713	91.5%	56.7%	404	363	89.9%	46.6%	39	0
PTAS	Physical Therapy Assistant	23	18	78.3%	44.4%	8	5	62.5%	21.7%	0	0
PVET	Pre-Veterinary Medicine	8	5	62.5%	60.0%	3	2	66.7%	25.0%	0	0
RDTC	Radiography Technologist	35	29	82.9%	37.9%	11	9	81.8%	25.7%	0	0
RECM	Records Management	9	8	88.9%	62.5%	5	5	100.0%	55.6%	2	4
REFT	Refinishing Technician	1	0	0.0%	0.0%	0	0	0.0%	0.0%	0	0
REMG	Real Estate Management	70	65	92.9%	58.5%	38	35	92.1%	50.0%	11	10
REST	Restaurant Management	1	0	0.0%	0.0%	0	0	0.0%	0.0%	0	0
RFRG	Refrigeration	1	1	100.0%	0.0%	0	0	0.0%	0.0%	0	0
RSPT	Respiratory Care Technology	5	3	60.0%	100.0%	3	1	33.3%	20.0%	0	0
RTVB	Radio-Television-Broadcasting	324	299	92.3%	61.9%	185	175	94.6%	54.0%	20	0
SACL	Substance Abuse Counseling	4	4	100.0%	25.0%	1	1	100.0%	25.0%	0	3
SACN	Systems Admin-Adv CISCO Networ	2	2	100.0%	0.0%	0	0	0.0%	0.0%	0	0
SAMS	Systems Admin-Microsoft Sys Su	2	0	0.0%	0.0%	0	0	0.0%	0.0%	0	0
SBMG	Small Business Management	9	8	88.9%	0.0%	0	0	0.0%	0.0%	0	0
SBSC	Social & Behavioral Sciences	1	1	100.0%	0.0%	0	0	0.0%	0.0%	0	0
SCDC	Science- Dual Credit	1	1	100.0%	0.0%	0	0	0.0%	0.0%	0	0

## STUDENT RETENTION BY DECLARED MAJOR

Source: Student Course, Graduation Report

Major Code	Major Title	Initial Fall Enrollment	Initial Fall Completion	Within Semester Completion Initial Fall	Percentage of Fall Completers Enrolled in Spring	Spring Enrollment	Spring Completion	Within Semester Completion Spring	Initial Fall Who Completed Spring Semester	Grad	Cert
SEGT	Safety Engineering Tech	4	4	100.0%	0.0%	0	0	0.0%	0.0%	0	0
SETC	Surveying Engineering Technolo	7	7	100.0%	28.6%	2	2	100.0%	28.6%	0	0
SFDV	Software Development	4	4	100.0%	50.0%	2	1	50.0%	25.0%	0	0
SGTC	Surgical Technology	1	1	100.0%	0.0%	0	0	0.0%	0.0%	0	0
SMTR	Specialty Medical Transcriptio	1	1	100.0%	0.0%	0	0	0.0%	0.0%	0	0
SOCI	Sociology	45	44	97.8%	47.7%	21	21	100.0%	46.7%	12	0
SOCW	Social Work	220	193	87.7%	54.9%	106	94	88.7%	42.7%	12	0
SPAN	Spanish	1	1	100.0%	100.0%	1	1	100.0%	100.0%	0	0
SPCH	Speech	44	40	90.9%	65.0%	26	24	92.3%	54.5%	3	0
SPDR	Speech/Drama	3	2	66.7%	50.0%	1	1	100.0%	33.3%	0	0
SPSP	Spreadsheet Specialist	2	1	50.0%	0.0%	0	0	0.0%	0.0%	0	0
SUCT	Skills Upgrade Certificate	1	1	100.0%	0.0%	0	0	0.0%	0.0%	0	0
SWSP	Software Specialist	1	1	100.0%	0.0%	0	0	0.0%	0.0%	0	1
TAAD	Teacher Assistant/Aide	4	4	100.0%	50.0%	2	2	100.0%	50.0%	0	0
TCHA	Teacher Assistant	19	17	89.5%	35.3%	6	6	100.0%	31.6%	0	3
TCHG	Teaching	37	29	78.4%	10.3%	3	3	100.0%	8.1%	0	0
TCHI	Teaching-1st Curriculum	40	39	97.5%	53.8%	21	20	95.2%	50.0%	0	0
TCII	Teaching-2nd Curriculum	15	14	93.3%	64.3%	9	7	77.8%	46.7%	0	0
TCST	Technical Studies	38	36	94.7%	22.2%	8	7	87.5%	18.4%	0	0
TDAM	3-D Animation	4	4	100.0%	0.0%	0	0	0.0%	0.0%	0	0
TECT	TX Teacher EC-4, 4-8, EC-12	526	492	93.5%	60.4%	297	270	90.9%	51.3%	97	0
TEDU	Teacher Education	43	37	86.0%	18.9%	7	6	85.7%	14.0%	0	0

## STUDENT RETENTION BY DECLARED MAJOR

Source: Student Course, Graduation Report

Major Code	Major Title	Initial Fall Enrollment	Initial Fall Completion	Within Semester Completion Initial Fall	Percentage of Fall Completers Enrolled in Spring	Spring Enrollment	Spring Completion	Within Semester Completion Spring	Initial Fall Who Completed Spring Semester	Grad	Cert
TEEC	Teacher Education, EC-4, Early	313	300	95.8%	19.7%	59	55	93.2%	17.6%	10	0
THEA	Theatre	1	1	100.0%	0.0%	0	0	0.0%	0.0%	0	0
TIII	Teaching-3rd Curriculum	10	8	80.0%	12.5%	1	1	100.0%	10.0%	0	0
TPEC	Teacher Prep: Early Childhood E	2	1	50.0%	100.0%	1	0	0.0%	0.0%	0	0
TXCT	TX Teacher Cert 8-12, Other 8-12	592	552	93.2%	58.2%	321	293	91.3%	49.5%	60	0
UDCA	Undeclared-Archived	2	2	100.0%	100.0%	2	2	100.0%	100.0%	0	0
UDCP	Undeclared Dual Credit-Private	1	1	100.0%	100.0%	1	1	100.0%	100.0%	0	0
UDCS	Undeclared Dual Credit Student	8	6	75.0%	33.3%	2	2	100.0%	25.0%	0	0
UDHS	Undeclared (Home-Schooled)	2	1	50.0%	100.0%	1	1	100.0%	50.0%	0	0
UDUK	Undeclared/Unknown	14	13	92.9%	0.0%	0	0	0.0%	0.0%	0	0
UNDC	Undeclared	86	62	72.1%	25.8%	16	13	81.3%	15.1%	0	0
UNVT	Undecided Voc/Tech	1	1	100.0%	100.0%	1	1	100.0%	100.0%	0	0
VCT	Virtual College of Texas	18	0	0.0%	0.0%	0	0	0.0%	0.0%	0	0
VETM	Veterinary Medicine	2	2	100.0%	50.0%	1	1	100.0%	50.0%	0	0
VETT	Veterinary Technology	8	8	100.0%	25.0%	2	2	100.0%	25.0%	0	0
VISB	Visual Basic Programming	2	1	50.0%	100.0%	1	0	0.0%	0.0%	0	0
VNRS	Vocational Nursing	40	32	80.0%	59.4%	19	16	84.2%	40.0%	0	0
WBDV	WEB Developer	3	2	66.7%	0.0%	0	0	0.0%	0.0%	0	0
WDTI	WEB Design Technician Level I	6	6	100.0%	16.7%	1	1	100.0%	16.7%	0	4
WWTC	Welder/Welding Technologist	1	1	100.0%	0.0%	0	0	0.0%	0.0%	0	0

**CONTENTS – ENROLLMENT TRENDS**

**CONTENTS – ENROLLMENT TRENDS.....39**

**ACCD GEOGRAPHIC BOUNDARIES & SERVICE AREA ..... 40**

**ENROLLMENT BY SERVICE AREA, FALL 2010..... 40**

**ENROLLMENT FALL SEMESTERS 2001-2010..... 41**

**ENROLLMENT SPRING SEMESTERS 2002-2011 ..... 41**

**ENROLLMENT SUMMER SESSION I 2001-2010 ..... 42**

**ENROLLMENT SUMMER SESSION II 2001-2010 ..... 42**

**ENROLLMENT TRENDS BY CLASSIFICATION, FALL 2006-2010..... 43**

**GENDER, FALL 2006-2010 ..... 44**

**ETHNICITY, FALL 2006-2010 ..... 44**

**PTE VS. ARTS & SCIENCES ENROLLMENT, FALL 2006-2010..... 45**

**PART-TIME VS. FULL-TIME, FALL 2006-2010..... 45**

**DAY VS. EVENING FALL 2006-2010..... 46**

**RESIDENCY, FALL 2006-2010 ..... 46**

**AGE, FALL 2006-2010..... 47**

**FIRST-TIME STUDENTS, FALL 2006-2010 ..... 47**

**FIRST TIME TRANSFERS AND FIRST TIME IN COLLEGE ..... 48**

**CONTACT HOURS 2006-2007 TO 2010-2011..... 50**

**DUAL CREDIT BY HIGH SCHOOL OF ATTENDANCE ..... 51**

**DISTANCE EDUCATION – ENROLLMENT ..... 53**

**FALL 2006 TO FALL 2010 ..... 53**

**DEVELOPMENTAL EDUCATION ..... 53**

**ENROLLMENT FALL SEMESTERS 2006-2010..... 53**

**DEVELOPMENTAL EDUCATION ..... 54**

**FALL SEMESTERS 2006-2010 ..... 54**

**CONTINUING EDUCATION TRAINING NETWORK..... 55**

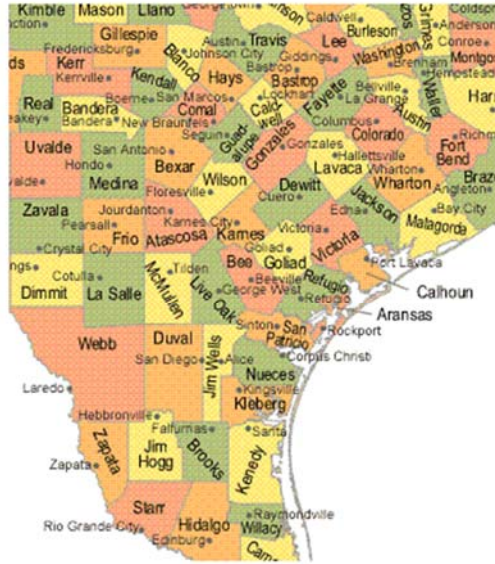
**Gender, Ethnicity, Age, Special Populations ..... 55**

**HEADCOUNT TRENDS BY QUARTER (REIMBURSABLE COURSES)..... 56**

**CONTACT HOUR TRENDS BY QUARTER (REIMBURSABLE COURSES) ..... 56**

**CLASS TRENDS BY QUARTER (REIMBURSABLE COURSES)..... 56**

## ACCD GEOGRAPHIC BOUNDARIES & SERVICE AREA



San Antonio College’s Service Area includes Atascosa, Bexar, Comal, Guadalupe, Kerr, Kendall and Wilson Counties.

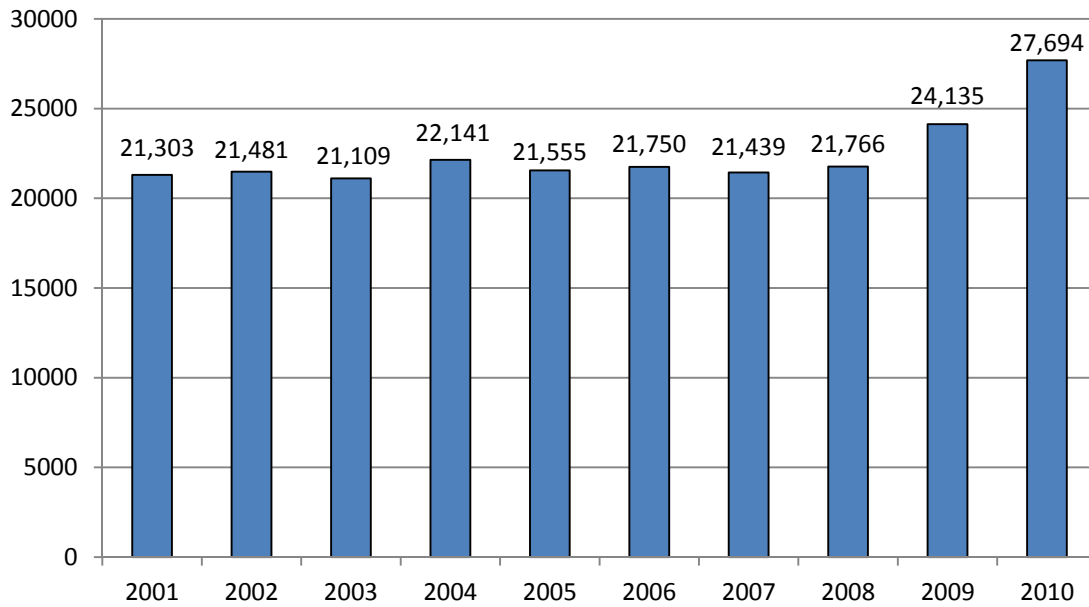
## ENROLLMENT BY SERVICE AREA, FALL 2010

County	Enrollment	Percent
Bandera	60	0.2%
Bexar	20963	83.0%
Comal	813	3.2%
Guadalupe	1165	4.6%
Kerr	201	0.8%
Kendall	101	0.4%
Medina	80	0.3%
Wilson	178	0.7%

SOURCE: CBM001

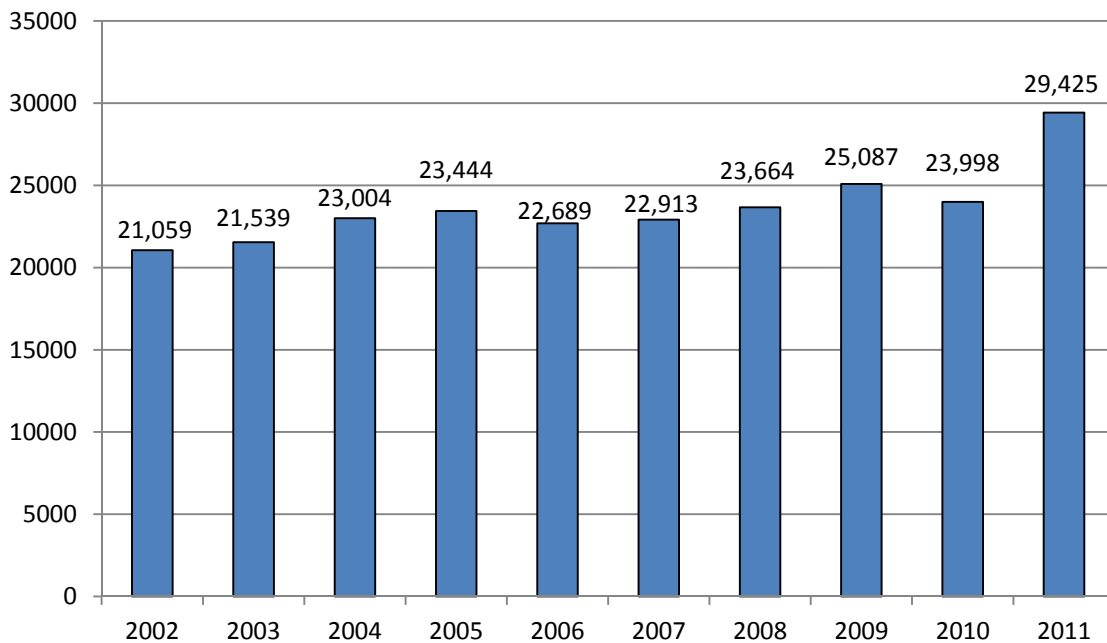


## ENROLLMENT FALL SEMESTERS 2001-2010



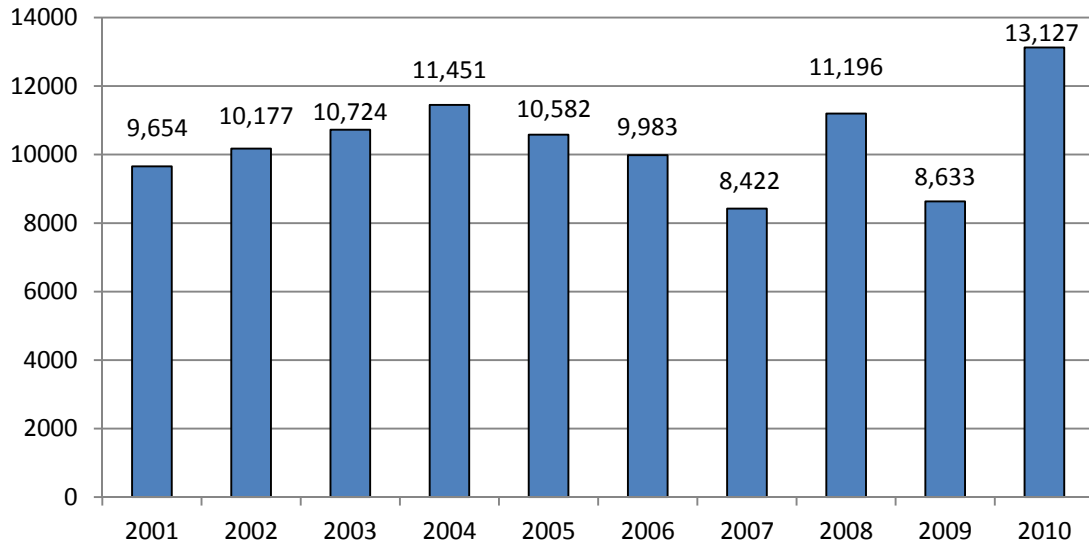
Source: Student Course

## ENROLLMENT SPRING SEMESTERS 2002-2011



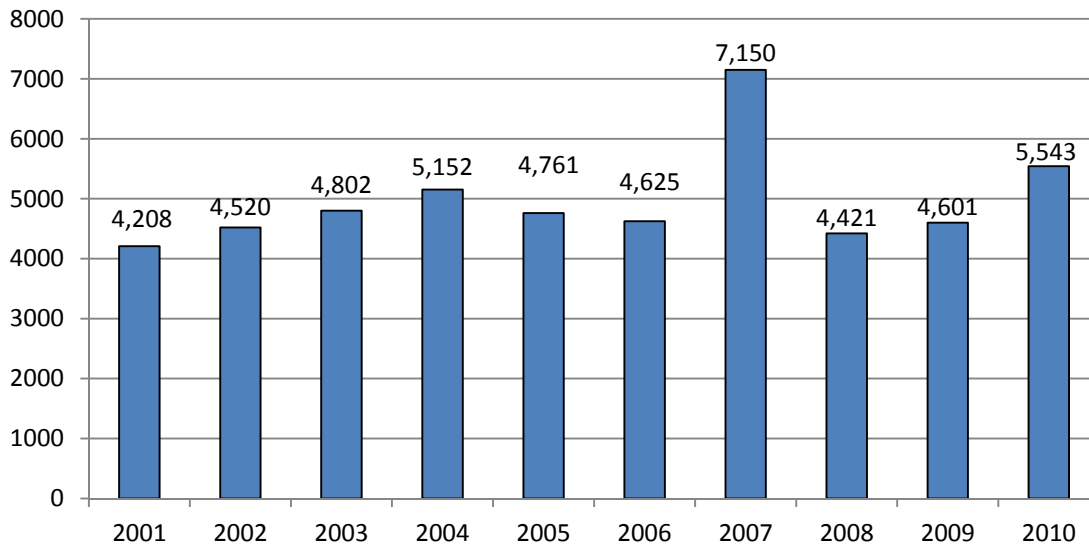
Source: Student Course

## ENROLLMENT SUMMER SESSION I 2001-2010



Source: Student Course

## ENROLLMENT SUMMER SESSION II 2001-2010



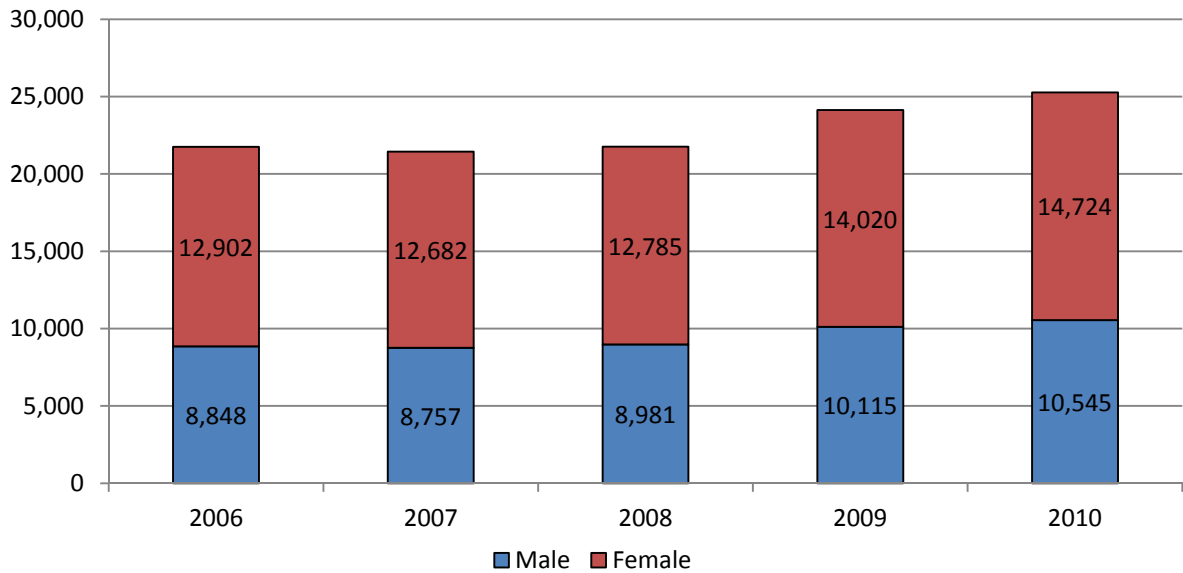
Source: Student Course

## ENROLLMENT TRENDS BY CLASSIFICATION, FALL 2006-2010

	2006	2007	2008	2009	2010
First-Time in College	4,956	5,255	5,123	5,988	3,306
Dual Credit	1,600	1,851	2,032	2,054	1,559
<b>SEX</b>					
Female	12,902	12,682	12,785	14,020	14,724
Male	8,848	8,757	8,981	10,115	10,545
<b>ETHNICITY</b>					
African-American	1,039	1,036	1,130	1,301	1,690
Asian	593	588	619	682	876
Hispanic	10,317	10,218	10,517	11,557	9,468
Other	82	102	89	111	1,180
White	9,403	9,201	9,063	10,158	12,328
<b>AGE</b>					
≤17	1,737	2,008	2,138	2,194	2,391
18-21	8,631	8,402	8,712	9,339	9,741
22-24	3,443	3,462	3,327	3,850	3,781
25-30	3,692	3,163	3,182	3,602	4,323
31-35	1,602	1,639	1,687	1,965	1,973
≥36	2,623	2,765	2,720	3,185	3,060
<b>DIVISION</b>					
Arts & Sciences	12,729	12,697	13,540	14,995	17,199
Prof/Tech	9,021	8,742	8,226	9,140	8,070
<b>ENROLLMENT STATUS</b>					
<12 hours(Part Time)	13,087	13,934	14,362	15,845	15,928
≥12 Hours(Full-Time)	8,663	7,505	7,404	8,290	9,341
<b>DAY v EVENING</b>					
Concurrent	3,120	3,003	2,619	2,731	3,960
Day	16,106	16,217	16,973	13,549	16,841
Evening	2,525	2,219	2,174	3,150	3,747
<b>RESIDENCY</b>					
Texas	20,950	20,630	20,962	23,254	24,976
Other States	559	573	510	543	106
International	241	236	294	338	187
<b>TOTAL</b>	<b>21,750</b>	<b>21,439</b>	<b>21,766</b>	<b>24,135</b>	<b>25,269</b>

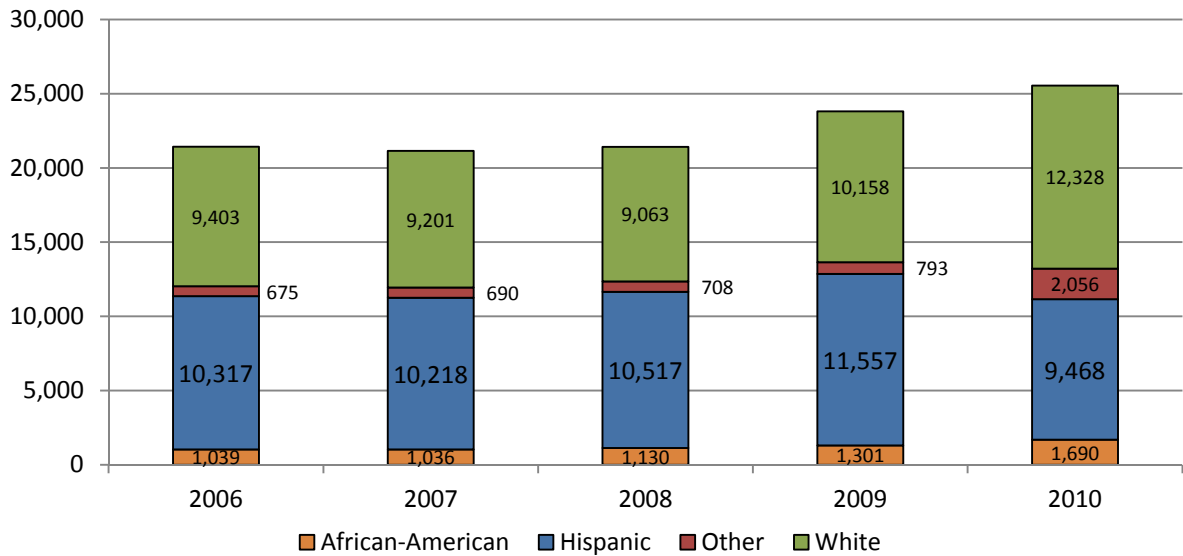
SOURCE: CBM001, Student Course (Totals do not include Flexible-entry students for whom no data is collected)  
Students designated as falling under HB1403 are counted in Texas population for residency purpose.

### GENDER, FALL 2006-2010



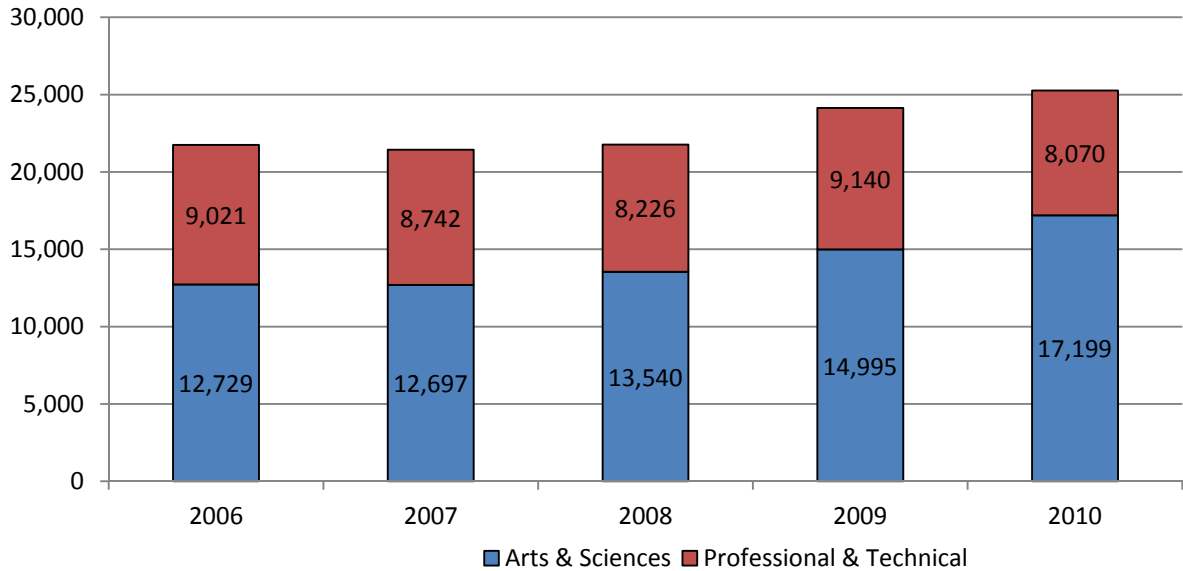
Source: CBM001

### ETHNICITY, FALL 2006-2010



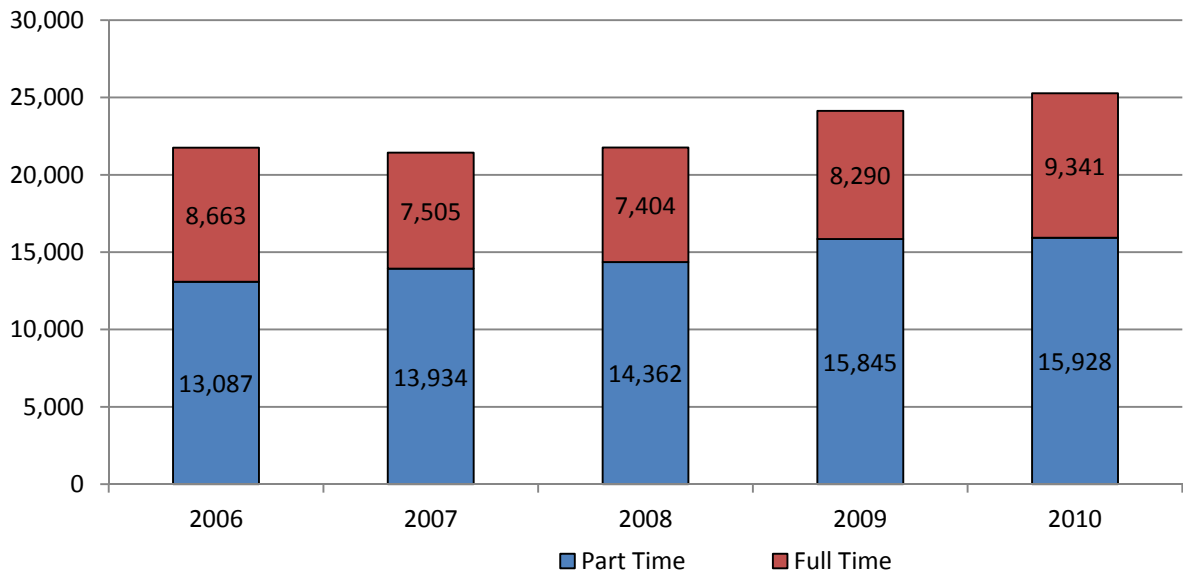
Source: CBM001

## PTE VS. ARTS & SCIENCES ENROLLMENT, FALL 2006-2010



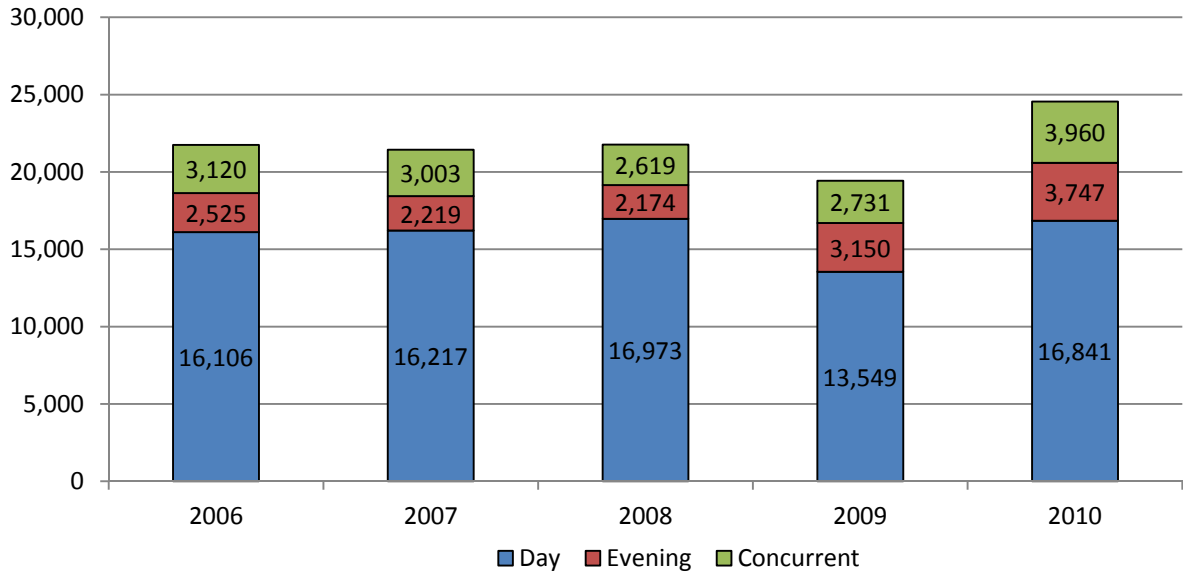
Source: CBM001

## PART-TIME VS. FULL-TIME, FALL 2006-2010



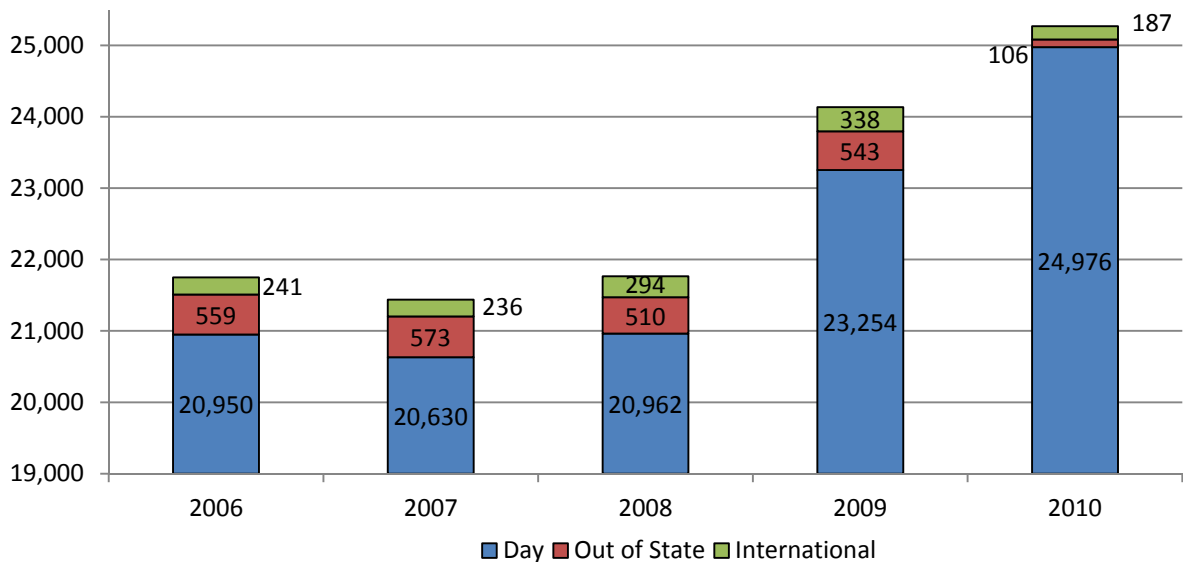
Source: CBM001

### DAY VS. EVENING FALL 2006-2010



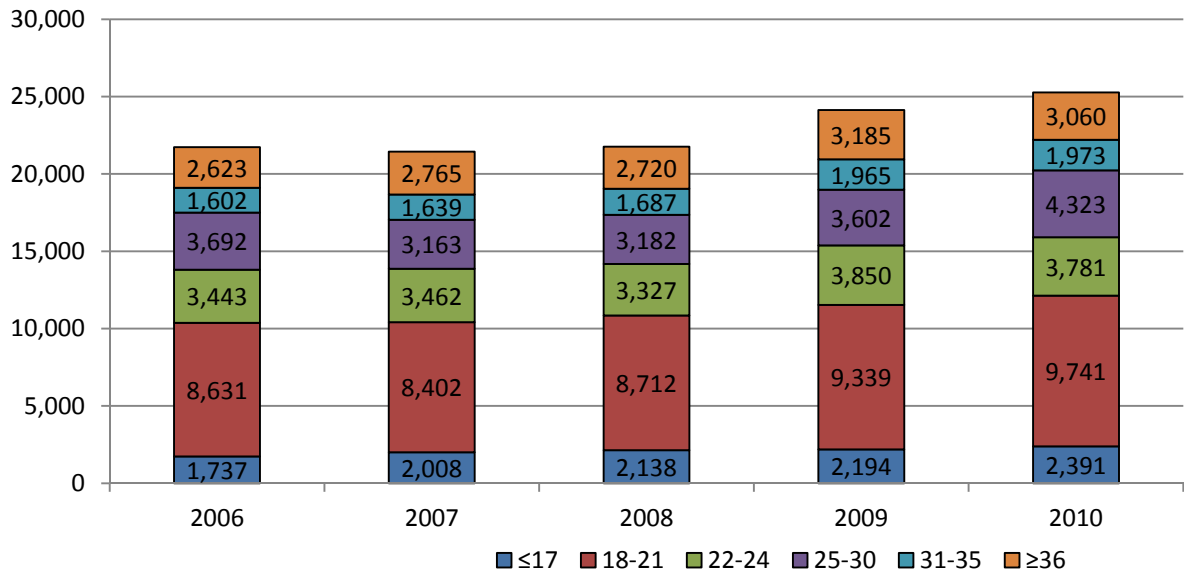
Source: Student Course

### RESIDENCY, FALL 2006-2010



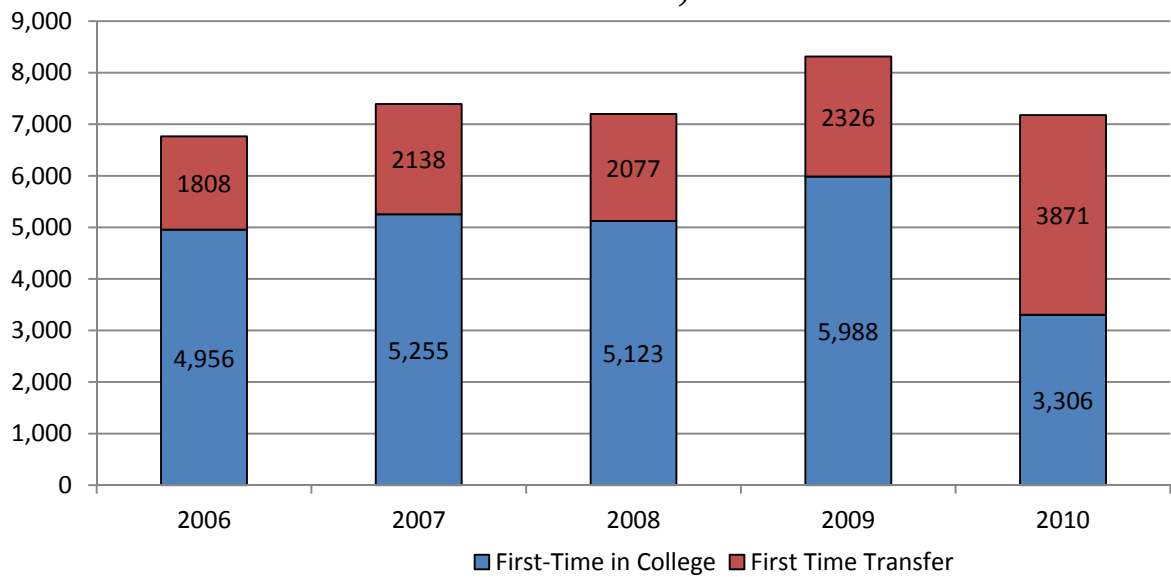
Source: CBM001

### AGE, FALL 2006-2010



Source: CBM001

### FIRST-TIME STUDENTS, FALL 2006-2010

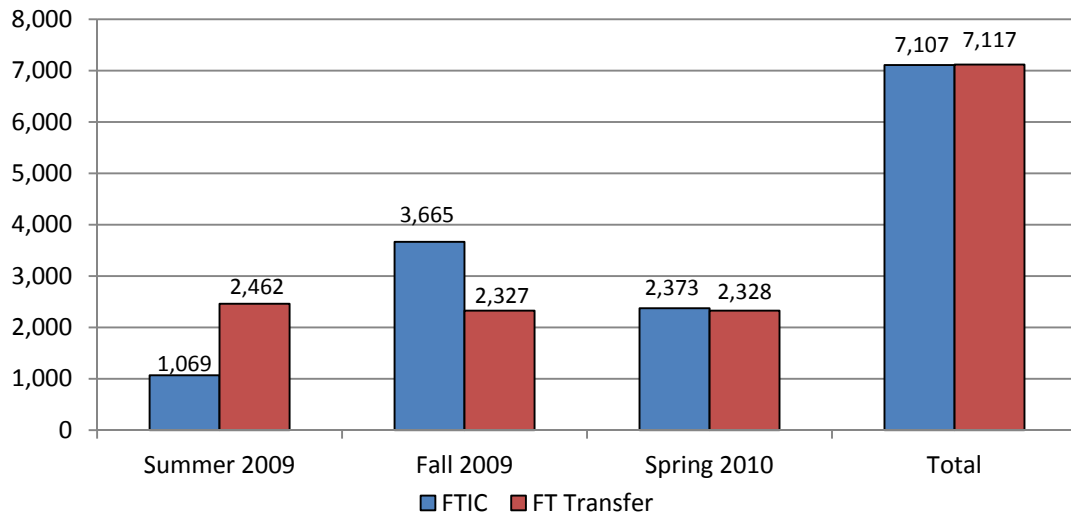


Source: CBM001

## FIRST TIME TRANSFERS AND FIRST TIME IN COLLEGE

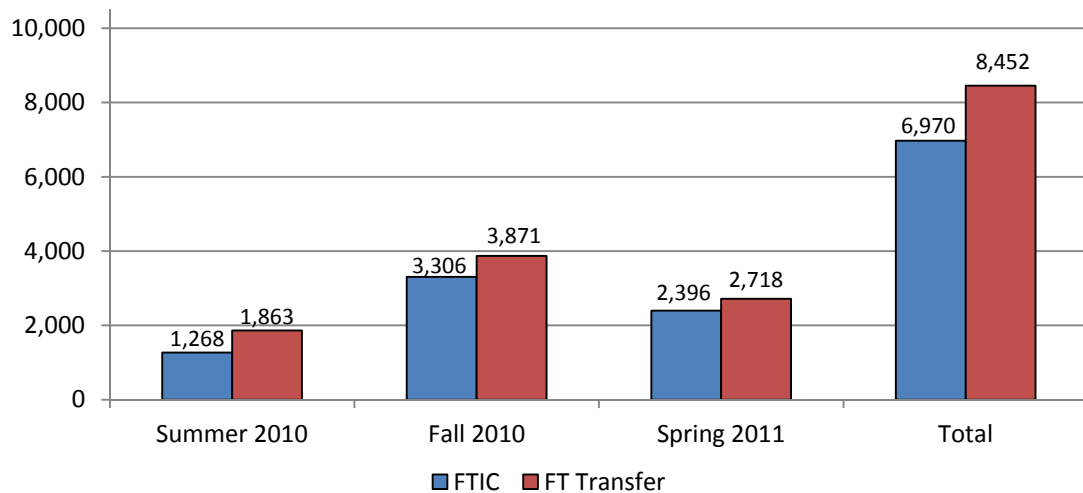
### Headcount Comparison of First Time Transfer and First Time in College Students by Term

#### Summer I 2009, Summer II 2009, Fall 2009, Spring 2010



Source: CBM001

#### Summer I 2010, Summer II 2010, Fall 2010, Spring 2011

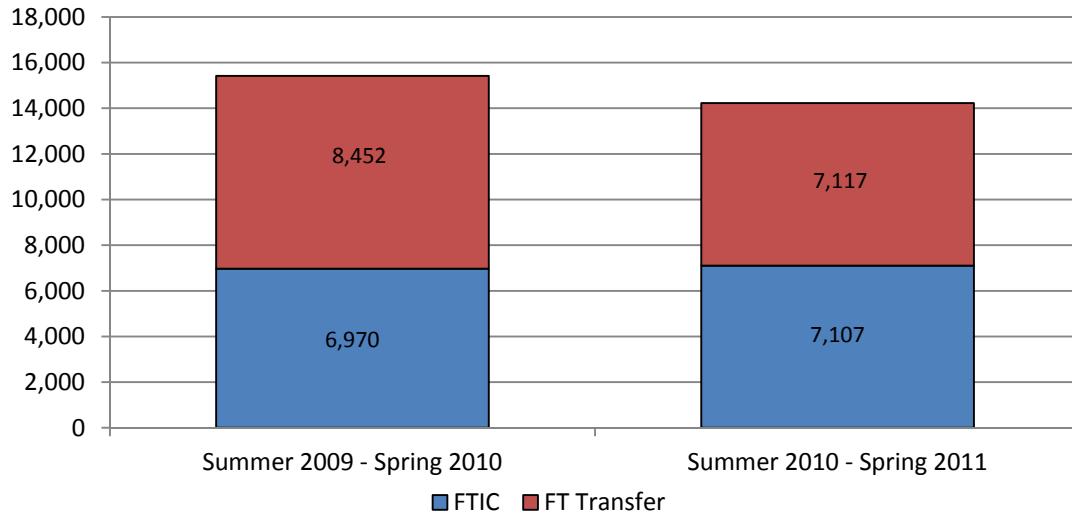


Source: CBM001



**Annual Headcount Comparison of First Time Transfer and First Time in College Students**

**Summer I 2009 – Spring 2010 to Summer I 2010 – Spring 2011**

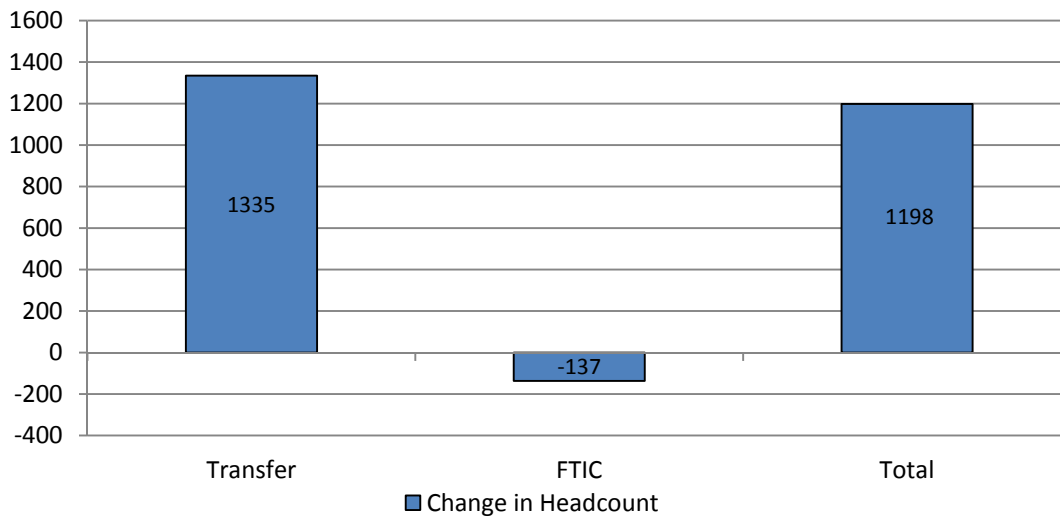


Source: CBM001

**Difference in Headcount of First Time Transfer and First Time in College Students by Annual Comparison**

**Summer I 2009 – Spring 2010 to Summer I 2010 – Spring 2011**

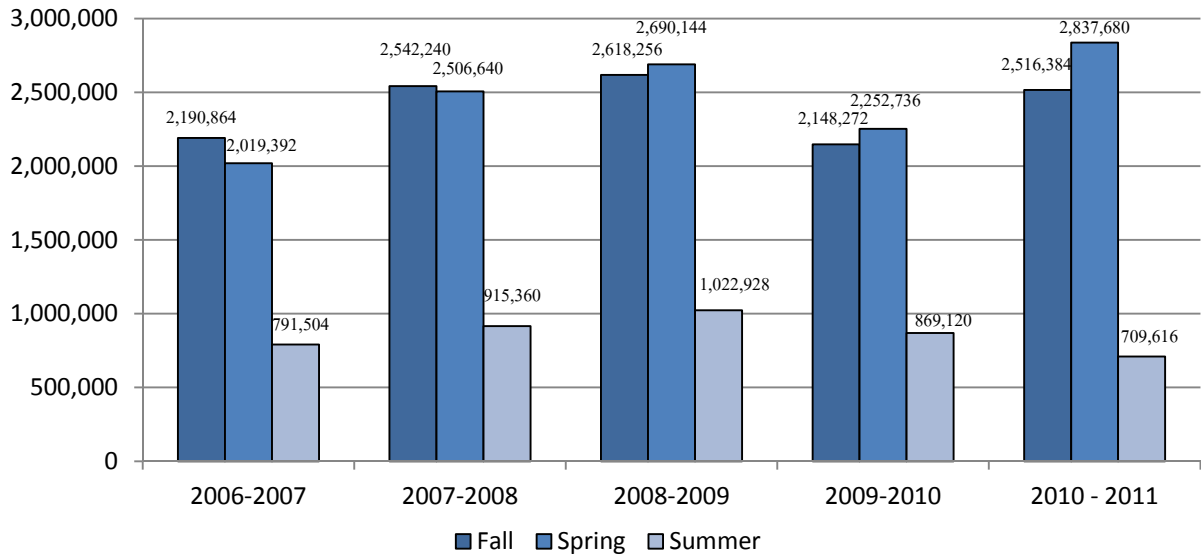
**Change in Headcount**



Source: CBM001

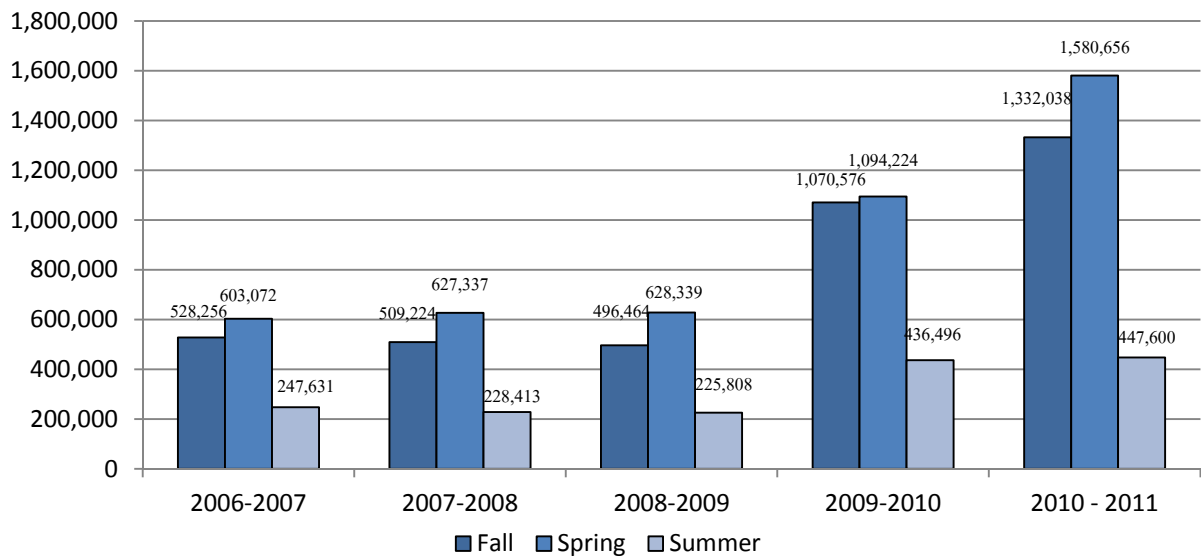
## CONTACT HOURS 2006-2007 TO 2010-2011

### ARTS & SCIENCES



Source: CBM001 \*Includes unfunded and excess developmental contact hours

### PROFESSIONAL/TECHNICAL



Source: CBM001 \*Includes unfunded and excess developmental contact hours

## DUAL CREDIT BY HIGH SCHOOL OF ATTENDANCE

FALL 2006 TO FALL 2010

High School	Fall 2006	Fall 2007	Fall 2008	Fall 2009	Fall 2010
Alamo Heights	267	274	342	225	308
Antonian	0	0	0	0	36
Bandera	72	75	37	17	18
Boerne	0	0	0	1	41
Bracken Christian	9	12	20	0	7
Business Careers	24	24	25	22	49
Canyon	177	177	96	1	7
Castle Hills Baptist	14	15	8	6	13
Center Point	13	16	15	2	2
Central Catholic	24	24	0	0	50
Churchill	184	185	202	243	536
Clark	0	0	0	0	200
Edison	47	73	52	29	375
Falfurrias	0	0	0	0	0
Fox Tech	1	2	37	3	313
Harlandale	0	116	0	2	147
Highlands	8	8	0	2	219
Ingram	0	0	0	0	0
ISA	1	1	111	47	78
Jefferson	23	35	0	4	428
Johnson	0	0	67	236	2
Kenedy	0	0	0	0	152
LaVernia	0	0	1	1	63
Lee	15	15	20	37	459
MacArthur	58	58	139	128	486

# SAC FACT BOOK 2010-2011

High School	Fall 2006	Fall 2007	Fall 2008	Fall 2009	Fall 2010
Madison	68	68	98	98	505
Marshall	5	5	0	0	142
McCollum	0	0	0	1	109
McMullen County	0	13	0	0	0
Natalia	0	0	0	0	12
Navarro	20	20	0	4	33
New Braunfels	0	0	0	10	167
Nixon-Smiley	24	20	0	18	9
Providence	26	26	28	29	62
Reagan	474	474	469	201	331
Roosevelt	37	37	41	96	410
SA Christian Academy	15	12	12	0	8
San Marcos Baptist	12	17	65	23	4
Seguin	0	0	0	9	113
Sendero Christian	5	10	3	0	0
Smithson Valley	133	130	75	1	238
Tivy (Kerrville)	97	82	151	110	59
Town East Christian	6	0	6	2	9
Trinity Christian	12	20	0	0	9
Home Schools/Early Adm.	116	0	184	0	0
Brownsville ISD	0	0	0	0	11
<b>TOTAL:</b>	<b>1,987</b>	<b>2,044</b>	<b>2,429</b>	<b>1,792</b>	<b>6,220</b>

Source: CBM001

## DISTANCE EDUCATION – ENROLLMENT

### FALL 2006 TO FALL 2010

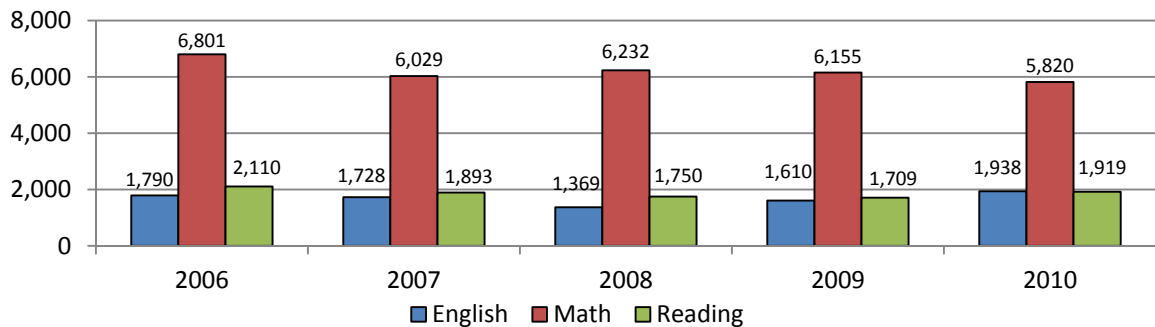
## DEVELOPMENTAL EDUCATION

### ENROLLMENT FALL SEMESTERS 2006-2010

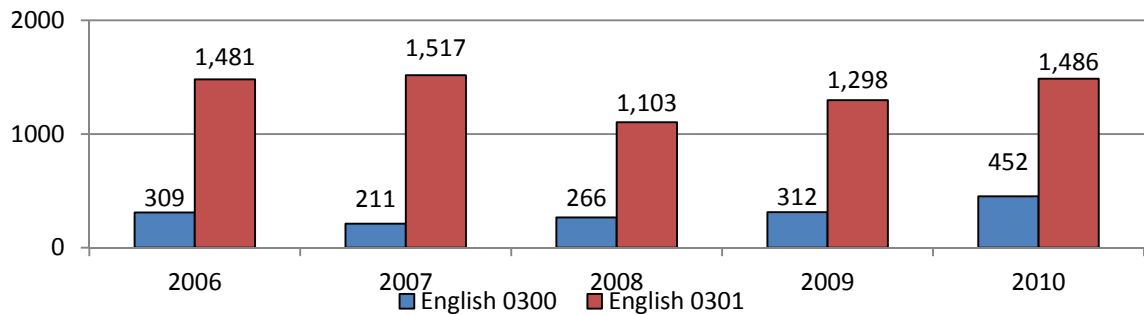
Course		2006	2007	2008	2009	2010
ENGL 0300	Enrollment	309	211	266	312	452
	Sections	15	13	13	13	19
ENGL 0301	Enrollment	1,481	1,517	1,103	1,298	1,486
	Sections	73	78	56	54	63
<b>TOTAL</b>	<b>Enrollment</b>	<b>1,790</b>	<b>1,728</b>	<b>1,369</b>	<b>1,610</b>	<b>1,938</b>
	<b>Sections</b>	<b>88</b>	<b>91</b>	<b>69</b>	<b>67</b>	<b>82</b>
MATH 0300	Enrollment	856	767	811	1,458	1,663
	Sections	34	34	34	53	61
MATH 0301	Enrollment	2,153	2,020	2,102	1,639	1,287
	Sections	72	90	89	65	54
MATH 0302	Enrollment	2,102	1,606	1,720	1,687	1,578
	Sections	85	72	73	61	63
MATH 0303	Enrollment	1,690	1,636	1,599	1,371	1,292
	Sections	67	73	72	54	53
<b>TOTAL</b>	<b>Enrollment</b>	<b>6,801</b>	<b>6,029</b>	<b>6,232</b>	<b>6,155</b>	<b>5,820</b>
	<b>Sections</b>	<b>269</b>	<b>269</b>	<b>262</b>	<b>233</b>	<b>231</b>
READ 0300	Enrollment	141	116	*	*	*
	Sections	6	9	*	*	*
READ 0301	Enrollment	298	290	356	353	458
	Sections	16	17	21	16	18
READ 0302	Enrollment	579	484	517	582	680
	Sections	27	25	25	24	25
READ 0303	Enrollment	1,092	1,003	877	774	781
	Sections	48	45	40	31	29
<b>TOTAL</b>	<b>Enrollment</b>	<b>2,110</b>	<b>1,893</b>	<b>1,750</b>	<b>1,709</b>	<b>1,919</b>
	<b>Sections</b>	<b>100</b>	<b>97</b>	<b>86</b>	<b>71</b>	<b>72</b>
<b>TOTAL ENROLLMENT</b>		<b>10,701</b>	<b>9,650</b>	<b>9,351</b>	<b>9,474</b>	<b>9,677</b>
<b>TOTAL SECTIONS</b>		<b>457</b>	<b>457</b>	<b>423</b>	<b>371</b>	<b>385</b>

Source: CBM004

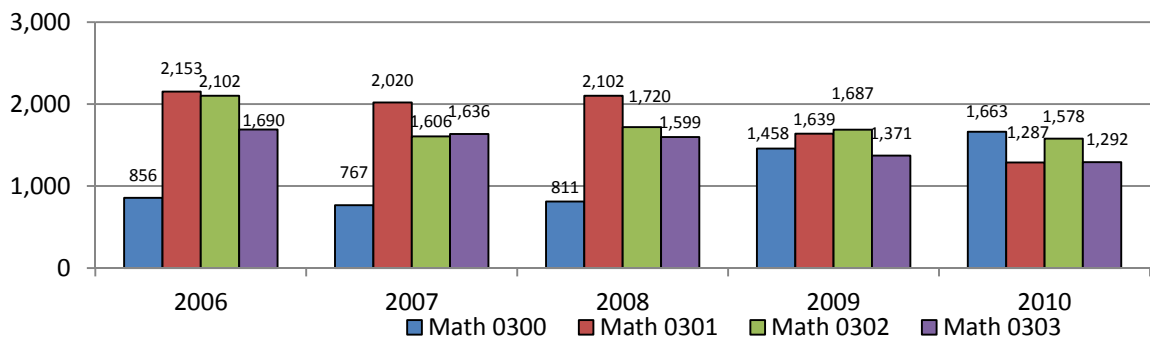
## DEVELOPMENTAL EDUCATION FALL SEMESTERS 2006-2010



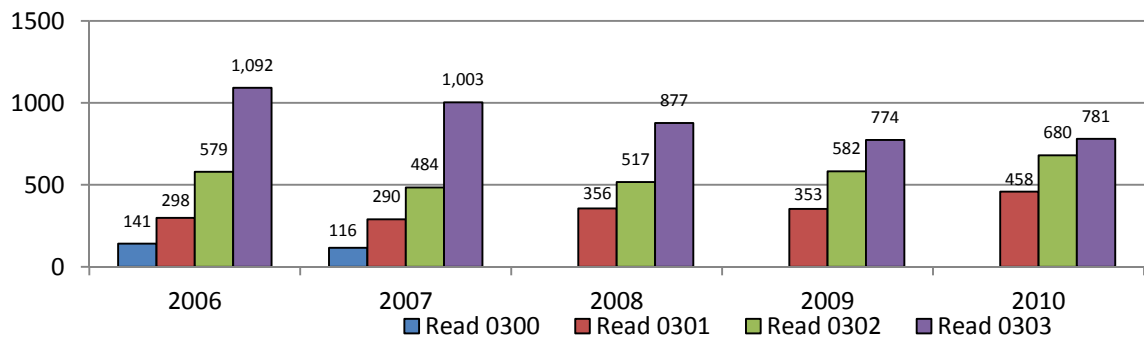
Source: CBM004



Source: CBM004



Source: CBM004



Source: CBM004 After 2008, Reading 0300 was discontinued

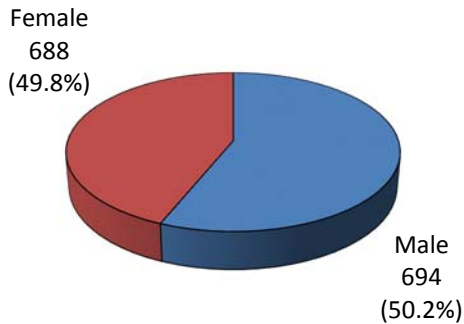
# CONTINUING EDUCATION TRAINING NETWORK

## Gender, Ethnicity, Age, Special Populations

FIRST QUARTER 2010

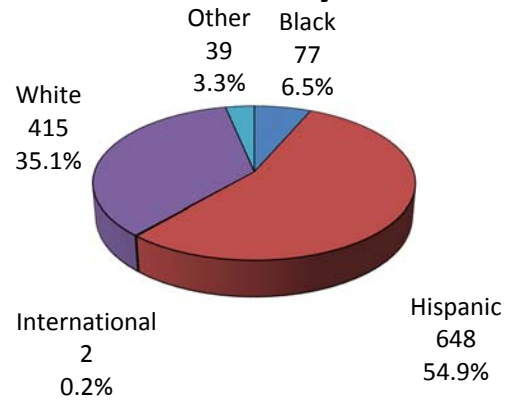
1181 STUDENTS

### Gender



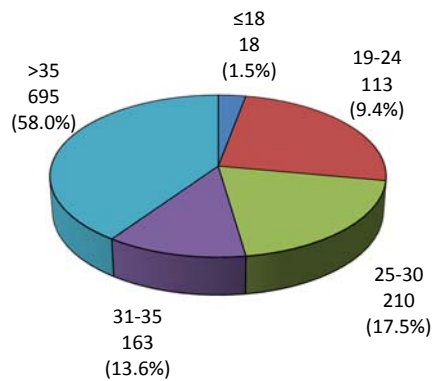
Source: CBM00A

### Ethnicity



Source: CBM00A

### Age

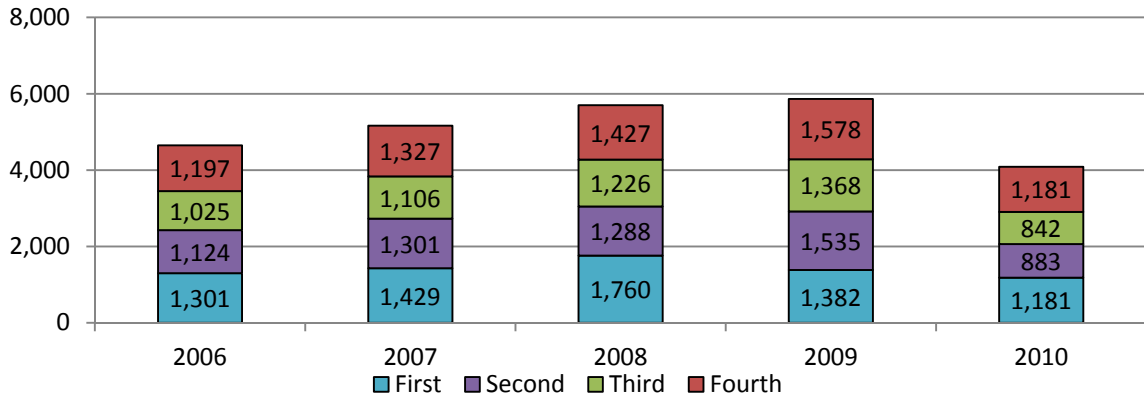


Source: CBM00A

Average Age: 34.5

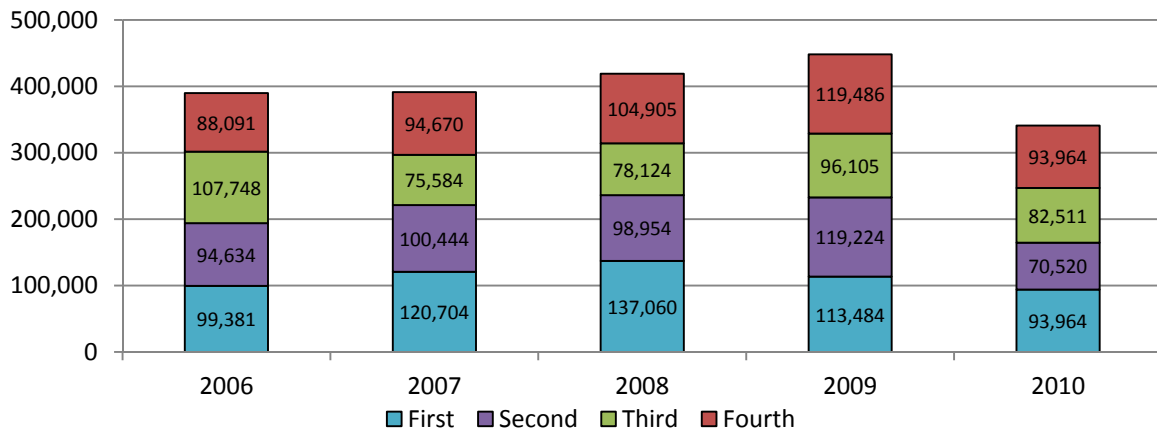
CONTINUING EDUCATION TRAINING NETWORK 2006-2010

HEADCOUNT TRENDS BY QUARTER (REIMBURSABLE COURSES)



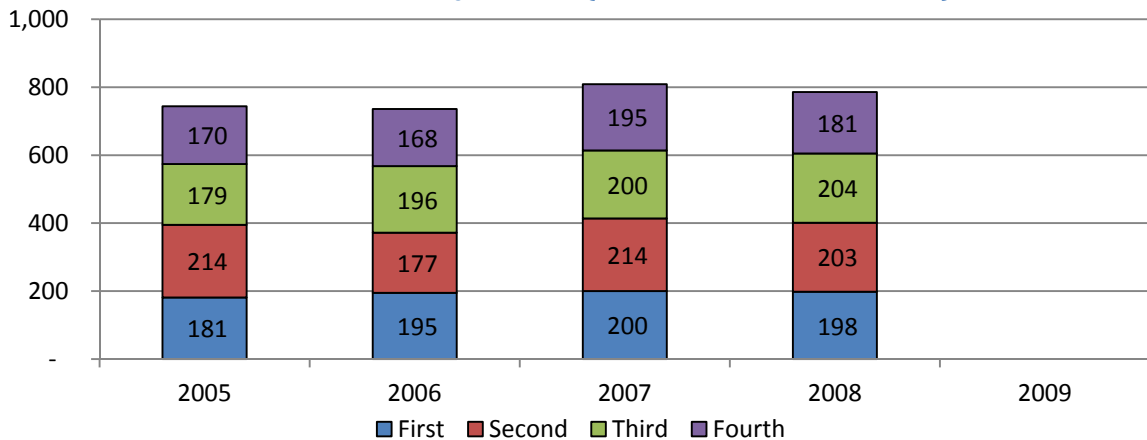
Source: CBM00A

CONTACT HOUR TRENDS BY QUARTER (REIMBURSABLE COURSES)



Source: CBM00A

CLASS TRENDS BY QUARTER (REIMBURSABLE COURSES)



Source: CBM00C



---

## CONTENTS – DISTRICT REPORTS

<b>CONTENTS – DISTRICT REPORTS .....</b>	<b>57</b>
<b>Developmental Education Fall Semesters 2006-2010.....</b>	<b>58</b>
ALL DEVELOPMENTAL ENGLISH—PRODUCTIVE GRADE RATES .....	58
ALL DEVELOPMENTAL MATH—PRODUCTIVE GRADE RATES .....	59
DEVELOPMENTAL READING—PRODUCTIVE GRADE RATES.....	62

## Developmental Education Fall Semesters 2006-2010

<b>ALL DEVELOPMENTAL ENGLISH—PRODUCTIVE GRADE RATES</b>															
	2006			2007			2008			2009			2010		
	Enrolled	PGR	%	Enrolled	PGR	%	Enrolled	PGR	%	Enrolled	PGR	%	Enrolled	PGR	%
<b>All Developmental English</b>	1,701	892	52.4%	1,689	899	53.2%	1,271	727	57.2%	1,707	1,036	60.7%	2,143	1,234	57.6%
<b>Gender</b>															
<b>All Female</b>	877	505	57.6%	871	506	58.1%	613	376	61.3%	896	597	66.6%	1,121	674	60.1%
<b>All Male</b>	824	387	47.0%	818	393	48.0%	658	351	53.3%	811	439	54.1%	1,022	560	54.8%
<b>Ethnicity</b>															
<b>All American Indian/Alaskan</b>	4	3	75.0%	4	1	25.0%	5	3	60.0%	6	5	83.3%	8	6	75.0%
<b>All Asian/Pacific Islander</b>	39	19	48.7%	40	21	52.5%	35	24	68.6%	30	20	66.7%	57	41	71.9%
<b>All Black Non-Hispanic</b>	117	51	43.6%	95	51	53.7%	86	44	51.2%	108	56	51.9%	156	87	55.8%
<b>All Hispanic</b>	992	492	49.6%	1,036	525	50.7%	765	421	55.0%	1,084	648	59.8%	1,474	830	56.3%
<b>All White Non-Hispanic</b>	528	316	59.8%	22	286	1300.0%	361	224	62.0%	465	298	64.1%	438	266	60.7%
<b>All International</b>	21	11	52.4%	492	15	3.0%	19	11	57.9%	14	9	64.3%	5	3	60.0%

<b>ENGLISH 0300</b>															
	2006			2007			2008			2009			2010		
	Enrolled	PGR	%	Enrolled	PGR	%	Enrolled	PGR	%	Enrolled	PGR	%	Enrolled	PGR	%
<b>Gender</b>															
<b>Female</b>	158	77	48.7%	117	54	46.2%	130	90	69.2%	157	101	64.3%	278	161	57.9%
<b>Male</b>	153	59	38.6%	94	39	51.5%	137	66	48.2%	169	93	55.0%	273	147	53.8%
<b>Ethnicity</b>															
<b>American Indian/Alaskan</b>	1	1	0.0%	1	1	0.0%	0	0	0.0%	2	1	50.0%	4	4	100.0%
<b>Asian/Pacific Islander</b>	10	5	50.0%	8	3	37.5%	5	4	80.0%	8	6	75.0%	20	14	70.0%
<b>Black Non-Hispanic</b>	26	10	38.5%	18	8	44.4%	27	14	51.9%	29	15	51.7%	46	23	50.0%
<b>Hispanic</b>	199	82	41.2%	129	50	38.8%	177	86	48.6%	206	123	59.7%	369	208	56.4%
<b>White Non-Hispanic</b>	72	36	50.0%	54	31	57.4%	50	29	58.0%	78	46	59.0%	108	57	52.8%
<b>International</b>	3	2	66.7%	1	0	0.0%	8	3	37.5%	3	3	100.0%	2	1	50.0%

<b>ENGLISH 0301</b>															
	2006			2007			2008			2009			2010		
	Enrolled	PGR	%	Enrolled	PGR	%	Enrolled	PGR	%	Enrolled	PGR	%	Enrolled	PGR	%
<b>Gender</b>															
Female	7.5	428	59.5%	754	452	59.9%	483	306	63.4%	739	496	67.1%	843	513	60.9%
Male	671	328	48.9%	724	354	48.9%	521	285	54.7%	642	346	53.9%	749	413	55.1%
<b>Ethnicity</b>															
American Indian/Alaskan	3	2	66.7%	3	0	0.0%	5	3	60.0%	4	4	100.0%	4	2	50.0%
Asian/Pacific Islander	29	14	48.3%	32	18	56.3%	30	20	66.7%	22	14	63.6%	37	27	73.0%
Black Non-Hispanic	91	41	45.1%	77	43	55.8%	59	30	50.8%	79	41	51.9%	110	64	58.2%
Hispanic	793	410	51.7%	907	475	52.4%	588	335	57.0%	878	525	59.8%	1,105	622	56.3%
White Non-Hispanic	456	280	61.4%	438	255	58.2%	311	195	62.7%	387	252	65.1%	330	209	63.3%
International	18	9	50.0%	21	15	71.4%	11	8	72.7%	11	6	54.5%	3	2	66.7%

<b>ALL DEVELOPMENTAL MATH—PRODUCTIVE GRADE RATES</b>															
	2006			2007			2008			2009			2010		
	Enrolled	PGR	%	Enrolled	PGR	%	Enrolled	PGR	%	Enrolled	PGR	%	Enrolled	PGR	%
All Developmental	6,382	2,475	38.8%	5,561	2,263	40.7%	5,787	2,397	41.4%	6,483	3,039	46.9%	7,205	3,530	49.0%
<b>Gender</b>															
All Female	3,771	1,544	40.9%	3,255	1,413	43.4%	3,424	1,526	44.6%	3,843	1,875	48.8%	4,152	2,106	50.7%
All Male	2,611	931	35.7%	2,306	850	36.9%	2,363	871	36.9%	2,640	1,164	44.1%	3,053	1,424	46.6%
<b>Ethnicity</b>															
All American Indian/Alaskan	16	9	56.3%	16	6	37.5%	23	10	43.5%	31	11	35.5%	30	16	53.3%
All Asian/Pacific Islander	122	49	40.2%	92	44	47.8%	101	47	46.5%	73	41	56.2%	110	66	60.0%
All Black Non-Hispanic	320	111	34.7%	260	88	33.8%	331	128	38.7%	373	153	41.0%	460	211	45.9%
All Hispanic	3,428	1,209	35.3%	3,023	1,072	35.5%	3,139	1,158	36.9%	3,696	1,627	44.0%	4,397	2,069	47.1%
All White Non-Hispanic	2,470	1,084	43.9%	2,138	1,040	48.6%	2,155	1,033	47.9%	2,284	1,192	52.2%	2,180	1,150	52.8%
All International	26	13	50.0%	32	13	40.6%	38	21	55.3%	26	15	57.7%	22	16	72.7%

<i>Math 0300</i>															
	2006			2007			2008			2009			2010		
	Enrolled	PGR	%	Enrolled	PGR	%	Enrolled	PGR	%	Enrolled	PGR	%	Enrolled	PGR	%
<b>Gender</b>															
Female	493	459	93.1%	463	189	40.8%	463	223	48.2%	868	467	53.8%	1,151	621	54.0%
Male	326	269	82.5%	296	100	33.8%	296	105	35.5%	547	244	44.6%	819	402	49.1%
<b>Ethnicity</b>															
American Indian/Alaskan	6	5	83.3%	1	*	0.0%	2	1	50.0%	6	3	50.0%	11	9	81.8%
Asian/Pacific Islander	9	1	11.1%	5	1	20.0%	4	3	75.0%	9	4	44.4%	26	14	53.8%
Black Non-Hispanic	50	14	28.0%	40	4	10.0%	52	13	25.0%	104	41	39.4%	139	64	46.0%
Hispanic	497	205	41.2%	438	151	34.5%	502	195	38.8%	927	460	49.6%	1,371	697	50.8%
White Non-Hispanic	255	123	48.2%	241	132	54.8%	193	112	58.0%	365	203	55.6%	415	236	56.9%
International	2	2	100.0%	3	1	33.3%	6	4	66.7%	4	*	0.0%	5	2	40.0%

<i>Math 0301</i>															
	2006			2007			2008			2009			2010		
	Enrolled	PGR	%	Enrolled	PGR	%	Enrolled	PGR	%	Enrolled	PGR	%	Enrolled	PGR	%
<b>Gender</b>															
Female	1,186	441	37.2%	1,057	440	41.6%	1,144	505	44.1%	990	419	42.3%	909	457	50.3%
Male	860	292	34.0%	825	302	36.6%	824	271	32.9%	713	276	38.7%	701	312	44.5%
<b>Ethnicity</b>															
American Indian/Alaskan	5	2	40.0%	8	2	25.0%	12	8	66.7%	10	1	10.0%	5	3	60.0%
Asian/Pacific Islander	31	15	48.4%	26	11	42.3%	27	8	29.6%	11	7	63.6%	19	14	73.7%
Black Non-Hispanic	120	39	32.5%	100	36	36.0%	117	47	40.2%	89	27	30.3%	112	52	46.4%
Hispanic	1,159	355	30.6%	1,099	377	34.3%	1,131	391	34.6%	998	364	36.5%	972	420	43.2%
White Non-Hispanic	726	319	43.9%	642	312	48.6%	336	316	94.0%	588	290	49.3%	496	277	55.8%
International	5	3	60.0%	7	4	57.1%	12	6	50.0%	7	6	85.7%	4	3	75.0%

<i>Math 0302</i>															
	2006			2007			2008			2009			2010		
	Enrolled	PGR	%	Enrolled	PGR	%	Enrolled	PGR	%	Enrolled	PGR	%	Enrolled	PGR	%
<b>Gender</b>															
Female	1,180	462	39.2%	872	367	42.1%	960	391	40.7%	1,110	550	49.5%	1,125	525	46.7%
Male	777	262	33.7%	595	216	36.3%	611	220	36.0%	719	304	42.3%	822	361	43.9%
<b>Ethnicity</b>															
American Indian/Alaskan	1	*	0.0%	4	3	75.0%	2	*	0.0%	5	3	60.0%	7	2	28.6%
Asian/Pacific Islander	42	16	38.1%	31	11	35.5%	32	14	43.8%	24	12	50.0%	25	16	64.0%
Black Non-Hispanic	101	37	36.6%	67	28	41.8%	86	41	47.7%	103	45	43.7%	115	50	43.5%
Hispanic	1,002	351	35.0%	763	274	35.9%	814	289	35.5%	993	434	43.7%	1,130	493	43.6%
White Non-Hispanic	799	317	39.7%	6	2	33.3%	629	263	41.8%	696	356	51.1%	665	321	48.3%
International	12	3	25.0%	596	265	44.5%	8	4	50.0%	8	4	50.0%	4	3	75.0%

<i>Math 0303</i>															
	2006			2007			2008			2009			2010		
	Enrolled	PGR	%	Enrolled	PGR	%	Enrolled	PGR	%	Enrolled	PGR	%	Enrolled	PGR	%
<b>Gender</b>															
Female	912	401	44.0%	867	417	48.1%	857	407	47.5%	875	296	33.8%	967	503	52.0%
Male	648	267	41.2%	617	232	37.6%	632	275	43.5%	661	211	31.9%	711	349	49.1%
<b>Ethnicity</b>															
American Indian/Alaskan	4	2	50.0%	3	1	33.3%	7	1	14.3%	10	3	30.0%	7	2	28.6%
Asian/Pacific Islander	40	17	42.5%	30	21	70.0%	38	22	57.9%	29	10	34.5%	40	22	55.0%
Black Non-Hispanic	49	21	42.9%	53	20	37.7%	76	27	35.5%	77	27	35.1%	94	45	47.9%
Hispanic	770	298	38.7%	723	270	37.3%	692	283	40.9%	778	244	31.4%	924	459	49.7%
White Non-Hispanic	690	325	47.1%	659	331	50.2%	664	342	51.5%	635	219	34.5%	604	316	52.3%
International	7	5	71.4%	16	6	37.5%	12	7	58.3%	7	4	57.1%	9	8	88.9%

<b>DEVELOPMENTAL READING—PRODUCTIVE GRADE RATES</b>															
	2006			2007			2008			2009			2010		
	Enrolled	PGR	%	Enrolled	PGR	%	Enrolled	PGR	%	Enrolled	PGR	%	Enrolled	PGR	%
<b>All Developmental</b>	1,918	1,165	60.7%	1,736	1,073	61.8%	1,639	1,109	67.7%	1,802	1,292	71.7%	1,961	1,309	66.8%
<b>Gender</b>															
<b>All Female</b>	1,157	762	65.9%	1,046	676	64.6%	953	683	71.7%	1,042	796	76.4%	1,102	760	69.0%
<b>All Male</b>	761	403	53.0%	690	397	57.5%	686	426	62.1%	760	496	65.3%	859	549	63.9%
<b>Ethnicity</b>															
<b>All American Indian/Alaskan</b>	2	2	100.0%	7	3	42.9%	4	3	75.0%	9	8	88.9%	5	4	80.0%
<b>All Asian/Pacific Islander</b>	45	32	71.1%	34	25	73.5%	25	19	76.0%	26	23	88.5%	63	53	84.1%
<b>All Black Non-Hispanic</b>	121	71	58.7%	101	53	52.5%	132	83	62.9%	124	83	66.9%	141	90	63.8%
<b>All Hispanic</b>	1,221	706	57.8%	1,126	664	59.0%	1,051	689	65.6%	1,268	922	72.7%	1,410	955	67.7%
<b>All White Non-Hispanic</b>	509	339	66.6%	447	313	70.0%	409	299	73.1%	365	246	67.4%	332	200	60.2%
<b>All International</b>	20	15	75.0%	21	15	71.4%	18	16	88.9%	10	10	100.0%	8	7	87.5%

<b>READING 0301</b>															
	2006			2007			2008			2009			2010		
	Enrolled	PGR	%	Enrolled	PGR	%	Enrolled	PGR	%	Enrolled	PGR	%	Enrolled	PGR	%
<b>Gender</b>															
<b>Female</b>	159	95	59.7%	174	105	60.3%	200	119	59.5%	234	164	70.1%	219	139	63.5%
<b>Male</b>	124	65	52.4%	102	56	54.9%	156	78	50.0%	153	89	58.2%	173	96	55.5%
<b>Ethnicity</b>															
<b>American Indian/Alaskan</b>	1	1	*	1	0	*	0	0	*	5	5	100.0%	1	1	100.0%
<b>Asian/Pacific Islander</b>	10	7	70.0%	7	5	71.4%	4	4	100.0%	5	4	80.0%	18	15	83.3%
<b>Black Non-Hispanic</b>	20	9	45.0%	22	13	59.1%	24	10	41.7%	32	20	62.5%	38	22	57.9%
<b>Hispanic</b>	195	100	51.3%	179	100	55.9%	259	143	55.2%	281	187	66.5%	278	168	60.4%
<b>White Non-Hispanic</b>	53	40	75.5%	60	38	63.3%	62	36	58.1%	63	36	57.1%	53	27	50.9%
<b>International</b>	4	3	75.0%	7	5	71.4%	6	4	66.7%	1	1	100.0%	3	2	66.7%

<i>READING 0302</i>															
	2006			2007			2008			2009			2010		
	Enrolled	PGR	%	Enrolled	PGR	%	Enrolled	PGR	%	Enrolled	PGR	%	Enrolled	PGR	%
<b>Gender</b>															
Female	324	223	68.8%	262	175	66.8%	308	218	70.8%	365	283	77.5%	367	250	68.1%
Male	204	109	53.4%	187	118	63.1%	211	129	61.1%	259	171	66.0%	274	190	69.3%
<b>Ethnicity</b>															
American Indian/Alaskan	0	0	0.0%	0	0	0.0%	1	1	0.0%	2	2	100.0%	1	1	100.0%
Asian/Pacific Islander	10	6	60.0%	10	7	70.0%	9	5	55.6%	8	7	87.5%	18	15	83.3%
Black Non-Hispanic	36	21	58.3%	23	12	52.2%	46	34	73.9%	44	28	63.6%	38	25	65.8%
Hispanic	347	216	62.2%	310	192	61.9%	324	201	62.0%	457	340	74.4%	477	332	69.6%
White Non-Hispanic	132	87	65.9%	102	78	76.5%	134	101	75.4%	109	4	3.7%	105	65	61.9%
International	3	2	66.7%	4	4	100.0%	5	5	100.0%	4	3	75.0%	2	2	100.0%

<i>READING 0303</i>															
	2006			2007			2008			2009			2010		
	Enrolled	PGR	%	Enrolled	PGR	%	Enrolled	PGR	%	Enrolled	PGR	%	Enrolled	PGR	%
<b>Gender</b>															
Female	584	395	67.6%	538	355	66.0%	445	346	77.8%	443	349	78.8%	516	371	71.9%
Male	381	202	53.0%	357	199	55.7%	319	219	68.7%	348	236	67.8%	412	263	63.8%
<b>Ethnicity</b>															
American Indian/Alaskan	1	1	100.0%	5	3	60.0%	3	2	66.7%	2	1	50.0%	3	2	66.7%
Asian/Pacific Islander	22	17	77.3%	15	11	73.3%	11	10	90.9%	13	12	92.3%	27	23	85.2%
Black Non-Hispanic	50	32	64.0%	47	22	46.8%	62	39	62.9%	48	35	72.9%	65	43	66.2%
Hispanic	588	344	58.5%	551	328	59.5%	468	345	73.7%	530	395	74.5%	655	455	69.5%
White Non-Hispanic	292	193	66.1%	268	184	68.7%	213	162	76.1%	193	137	71.0%	174	108	62.1%
International	12	10	83.3%	9	6	66.7%	7	7	100.0%	5	5	100.0%	3	3	100.0%

Source: Student Course

---

## CONTENTS – PERSONNEL PROFILE

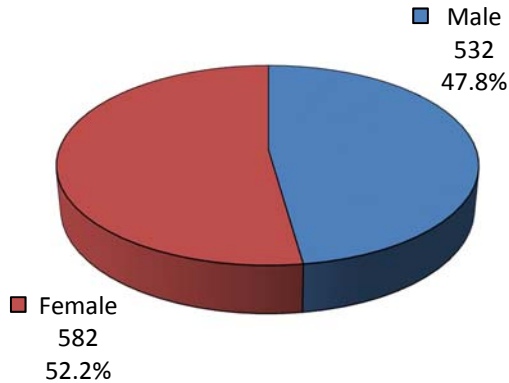
<b>CONTENTS – PERSONNEL PROFILE .....</b>	<b>64</b>
<b>FACULTY PROFILE – FALL 2010.....</b>	<b>65</b>
<b>Full-Time Faculty—Fall 2010.....</b>	<b>66</b>
<b>Faculty Rank—Fall 2010 .....</b>	<b>66</b>
<b>Full Time Employee Profile by Gender—Fall 2010.....</b>	<b>66</b>
<b>Full Time Employee Profile by Ethnicity—Fall 2010.....</b>	<b>67</b>



## FACULTY PROFILE – FALL 2010

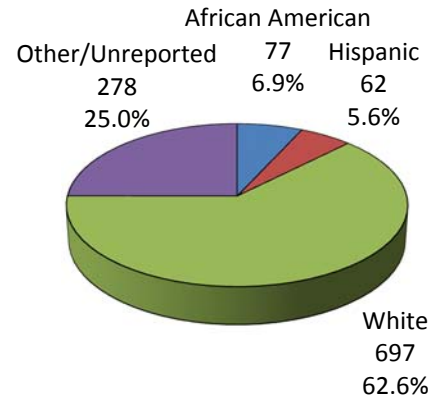
### 1,114 FACULTY

#### Gender



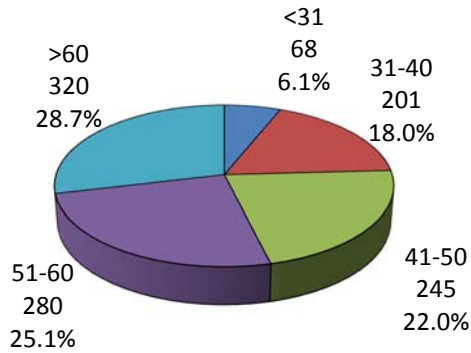
Source: CBM008

#### Ethnicity



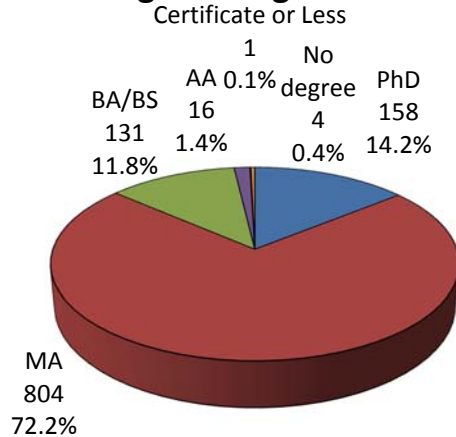
Source: CBM008

#### Age



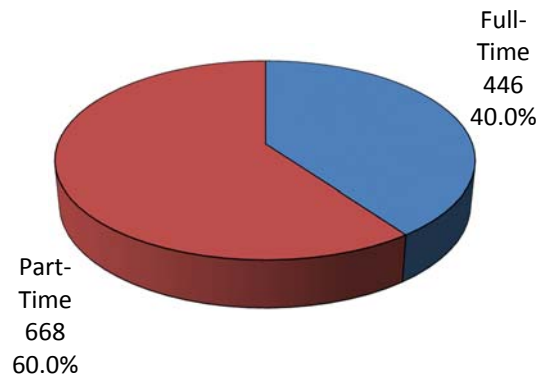
Source: CBM008

#### Highest Degree Held



Source: CBM008

#### SECTIONS TAUGHT



Source: CBM008

### Full-Time Faculty—Fall 2010

	Number	Percentage
White, Non-Hispanic	282	63.2%
Black, Non-Hispanic	31	7.0%
Hispanic	18	4.0%
Asian/Pacific Islander	23	5.2%
American Indian/Alaskan Native	4	0.9%
International	0	0.0%
Unknown or Not Reported	88	19.7%
<b>TOTAL</b>	<b>446</b>	

Source: CBM008

### Faculty Rank—Fall 2010

Rank	Number	Percentage
Professor	75	6.7%
Associate Professor	60	5.4%
Assistant Professor	83	7.5%
Instructor	158	14.2%
Adjunct Faculty and Other Faculty	738	66.2%
<b>TOTAL</b>	<b>1,114</b>	

Source: CBM008

### Full Time Employee Profile by Gender—Fall 2010

Rank	Number	Percentage
Female	224	50.2%
Male	222	49.8%
<b>TOTAL</b>	<b>446</b>	

Source: CBM008

### Full Time Employee Profile by Ethnicity—Fall 2010

Rank	Administrators		Faculty		Associate Professor		Professor		Adjunct	
	#	%	#	%	#	%	#	%	#	%
African American										
Hispanic										
White										
Other										
TOTAL:										

---

## CONTENTS – FINANCIAL PROFILE

<b>CONTENTS – FINANCIAL PROFILE .....</b>	<b>68</b>
<b>ACCD TUITION &amp; FEES 2010-2011 .....</b>	<b>69</b>
<b>2009-2010 San Antonio College Base Revenues .....</b>	<b>70</b>
<b>2010-2011 San Antonio College Budget Object Code Summary by Managing Area.....</b>	<b>Error! Bookmark not defined.</b>

## ACCD TUITION & FEES 2010-2011

Semester Hours Taken	Texas Resident				Non- Resident/International	
	In-District		Out-of- District		Tuition	Gen Fee
	Tuition	Gen Fee	Tuition	Gen Fee		
1-6	\$336.00	\$130.00	\$672.00	\$130.00	\$1,890.00	\$130.00
7	\$392.00	\$135.00	\$784.00	\$135.00	\$2,205.00	\$135.00
8	\$448.00	\$135.00	\$896.00	\$135.00	\$2,520.00	\$135.00
9	\$504.00	\$135.00	\$1,008.00	\$135.00	\$2,835.00	\$135.00
10	\$560.00	\$135.00	\$1,120.00	\$135.00	\$3,150.00	\$135.00
11	\$616.00	\$135.00	\$1,232.00	\$135.00	\$3,465.00	\$135.00
12	\$672.00	\$135.00	\$1,344.00	\$135.00	\$3,780.00	\$135.00
13	\$728.00	\$135.00	\$1,456.00	\$135.00	\$4,095.00	\$135.00
14	\$784.00	\$135.00	\$1,568.00	\$135.00	\$4,410.00	\$135.00
15	\$840.00	\$135.00	\$1,680.00	\$135.00	\$4,725.00	\$135.00
16	\$896.00	\$135.00	\$1,792.00	\$135.00	\$5,040.00	\$135.00
17	\$952.00	\$135.00	\$1,904.00	\$135.00	\$5,355.00	\$135.00
18	\$1,008.00	\$135.00	\$2,016.00	\$135.00	\$5,670.00	\$135.00
19	\$1,064.00	\$135.00	\$2,128.00	\$135.00	\$5,985.00	\$135.00
20	\$1,120.00	\$135.00	\$2,240.00	\$135.00	\$6,300.00	\$135.00
21	\$1,176.00	\$135.00	\$2,352.00	\$135.00	\$6,615.00	\$135.00

- Previously enrolled international students will be assessed at the current Non-Resident Tuition and Pledged Tuition rates.
- International students who enrolled at the Alamo Colleges on or prior to 8/18/2009 will be assessed a flat rate of \$3,500.00 plus the Student Activity Fee. (An additional \$210.00 for each credit hour beyond 18 applies to students who enrolled on or prior to 8/18/2009.)
- International students who enrolled on 8/19/2009 or thereafter will be assessed \$300.00 per credit hour plus Pledged Tuition and the Student Activity Fee.
- Beginning Spring 2010 all new, incoming international students will be assessed \$300.00 per credit hour plus Pledged Tuition and the Student Activity Fee. This rate will override the \$3,500.00 flat fee assessment.

## 2009-2010 San Antonio College Base Revenues

--

Source: 2009-10 ACCD Operating Budget Summary

<b>2010-2011 San Antonio College Operating Budget Object Code Summary</b>	
Full Time Employees	\$31,342,752
Non-Instructional	\$9,530,459
Instructional Salaries	\$21,812,293
Other Salaries & Wages	\$12,853,303
Fringe Benefits	\$7,867,129
<b>Total Personnel &amp; Benefits</b>	<b>\$52,063,184</b>
Equipment and Capital	\$878,100
Operating Expenses	\$11,677,578
Transfers	\$1,190,000
Scholarships	\$310,641
<b>Total Operating Expenses</b>	<b>\$14,056,319</b>
<b>TOTAL ALL EXPENSES</b>	<b>\$66,119,503</b>

Source: 2010-11 ACCD Operating Budget Summary (Object Code Summary by Managing Area) and SAC VP College Services