



Student Profile Trends 2007-2010

Institutional Planning, Research & Effectiveness

The Institutional Planning, Research & Effectiveness Department of St. Philip's College provides student enrollment trends based on Fall figures. The years listed in each student profile document are overlapped noting the most current data. Information contained in this document is a compilation of data from static databases and archived reports.

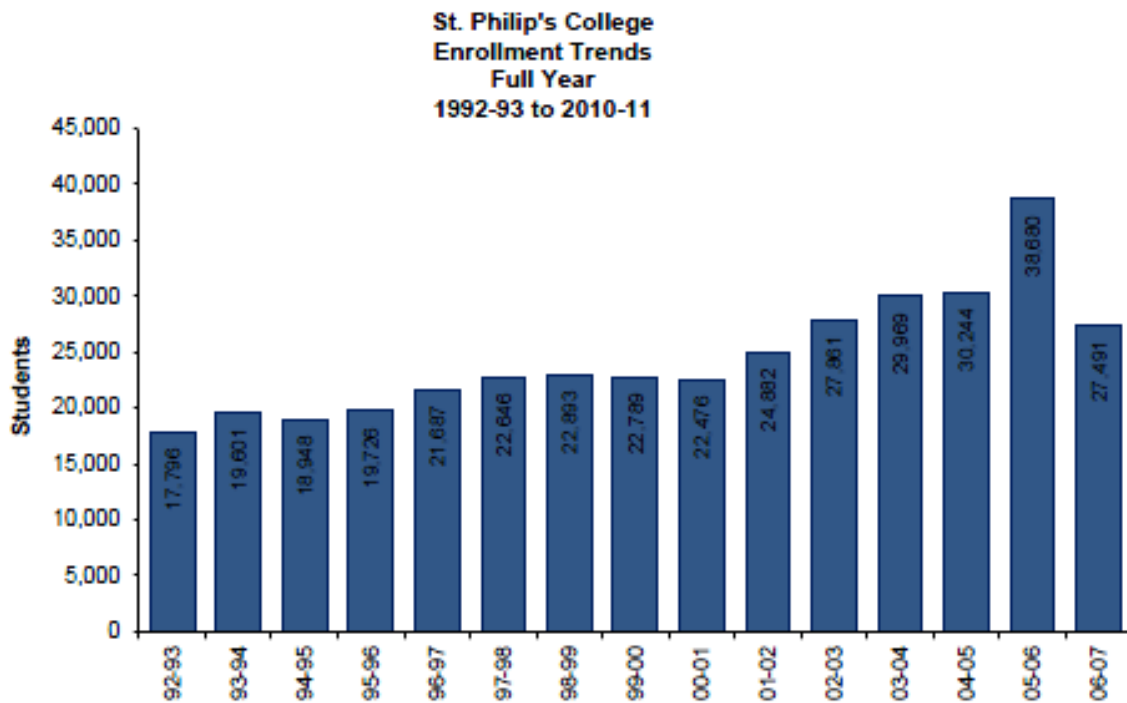


Table of Contents

ENROLLMENT TRENDS.....	1
DAY AND EVENING TRENDS	2
AGE TRENDS	3
GENDER TRENDS.....	5
STUDENT AGE & GENDER TRENDS	6
ETHNICITY TRENDS	7
FTIC TRENDS	8
FEEDER HIGH SCHOOLS.....	9
TOP 10 FEEDER ZIP CODES.....	10
RETENTION TRENDS	11
DEFINITIONS.....	12

**ST. PHILIP'S COLLEGE
ENROLLMENT TRENDS
1992-93 TO 2010-11**

Year	Fall			Spring		Summer			Total
		Fall Flex II	Spring	Total	Spring Flex II	Summer I	Total	Summer II	
10-11	10,828	3,123		3,123			0		13,951
09-10	11,008	2,347	10,664	13,011	2,209	4,019	6,228	1,963	32,210
08-09	10,337	1,719	10,226	11,945	1,592	3,937	5,529	1,829	29,640
07-08	9,852	1,480	9,457	10,937	1,503	3,839	5,342	1,485	27,616
06-07	9,899	1,374	9,507	10,881	1,429	3,665	5,094	1,617	27,491
05-06	10,187	1,396	9,730	21,313	1,378	3,919	5,297	1,883	38,680
04-05	10,575	1,633	10,234	11,867	1,406	4,493	5,899	1,903	30,244
03-04	9,880	1,777	10,191	11,968	1,593	4,611	6,204	1,917	29,969
02-03	9,336	1,392	9,648	11,040	1,609	4,216	5,825	1,660	27,861
01-02	8,630	1,060	8,692	9,752	1,333	3,859	5,192	1,308	24,882
00-01	8,293	1,077	7,787	8,864	1,391	2,903	4,294	1,025	22,476
99-00	8,072	940	8,001	8,941	1,336	3,204	4,540	1,236	22,789
98-99*	8,302	873	8,013	8,886	977	3,525	4,502	1,203	22,893
97-98	8,259	813	8,009	8,822	1,023	3,611	4,634	931	22,646
96-97	7,865	901	7,905	8,806	1,047	3,218	4,265	751	21,687
95-96	7,126	639	7,220	7,859	756	3,155	3,911	830	19,726
94-95	7,270	494	7,084	7,578	544	3,003	3,547	553	18,948
93-94	7,277	474	7,330	7,804	588	3,357	3,945	575	19,601
92-93	6,643	166	6,989	7,155	—	3,477	3,477	521	17,796

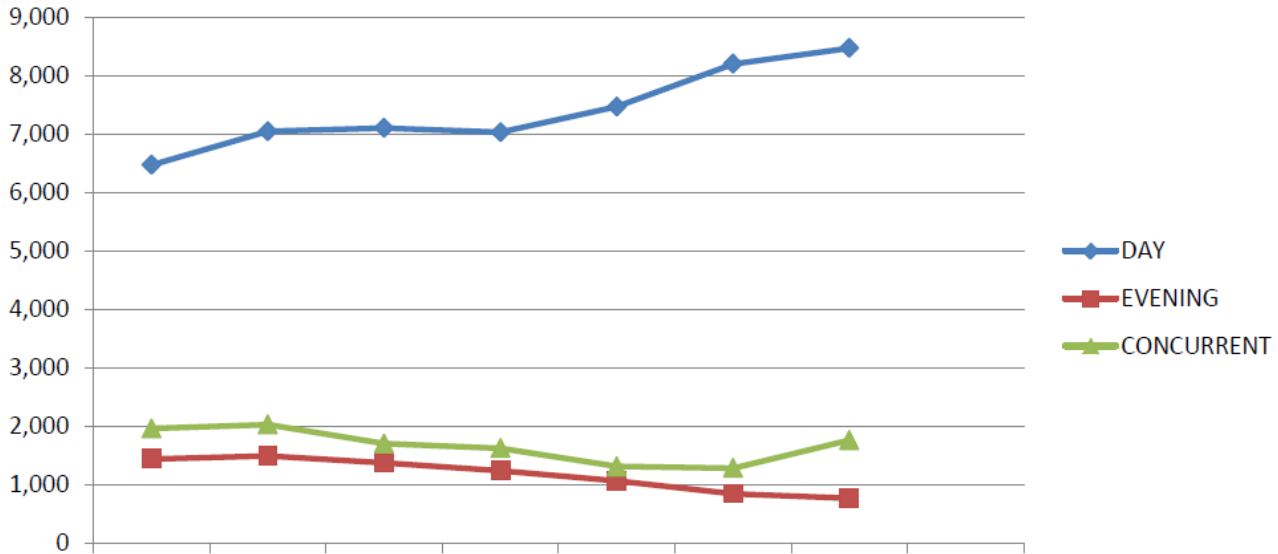


*Summer II '99 includes Summer I Flex II.

ST. PHILIP'S COLLEGE DAY/EVENING ENROLLMENT TRENDS

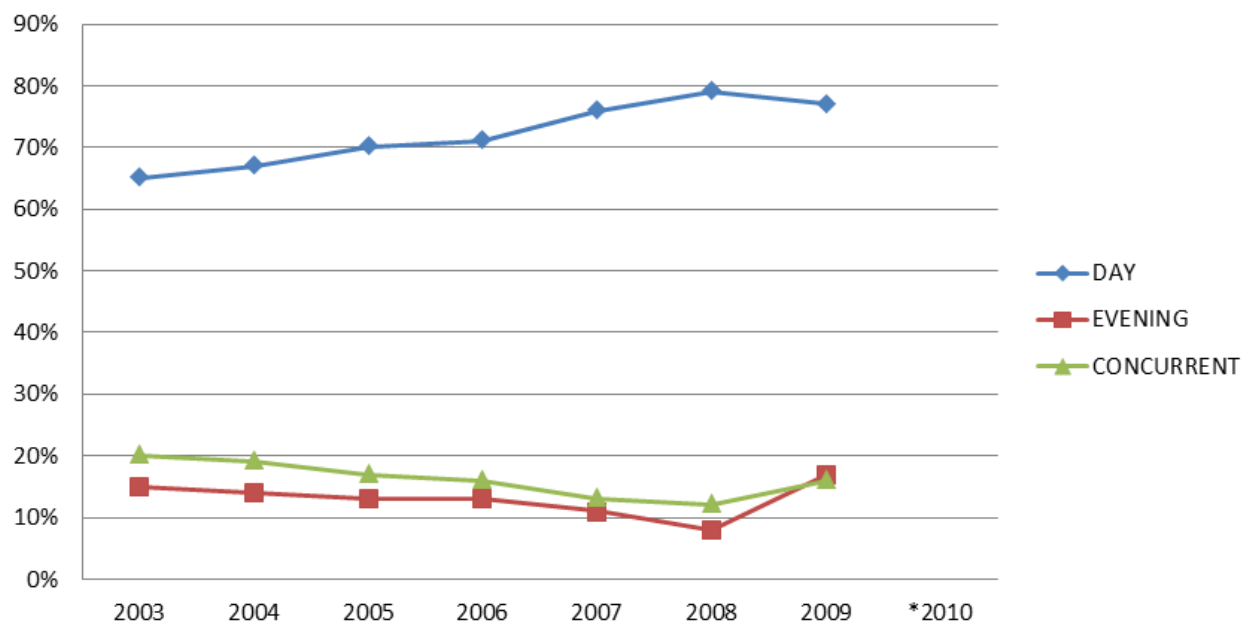
TOTAL STUDENTS

Fall	2003	2004	2005	2006	2007	2008	2009	*2010
DAY	6,469	7,042	7,101	7,027	7,463	8,196	8,465	
EVENING	1,445	1,500	1,379	1,242	1,071	851	777	
CONCURRENT	1,966	2,033	1,707	1,630	1,318	1,290	1,766	



PERCENTAGE

Fall	2003	2004	2005	2006	2007	2008	2009	*2010
DAY	65%	67%	70%	71%	76%	79%	77%	
EVENING	15%	14%	13%	13%	11%	8%	17%	
CONCURRENT	20%	19%	17%	16%	13%	12%	16%	

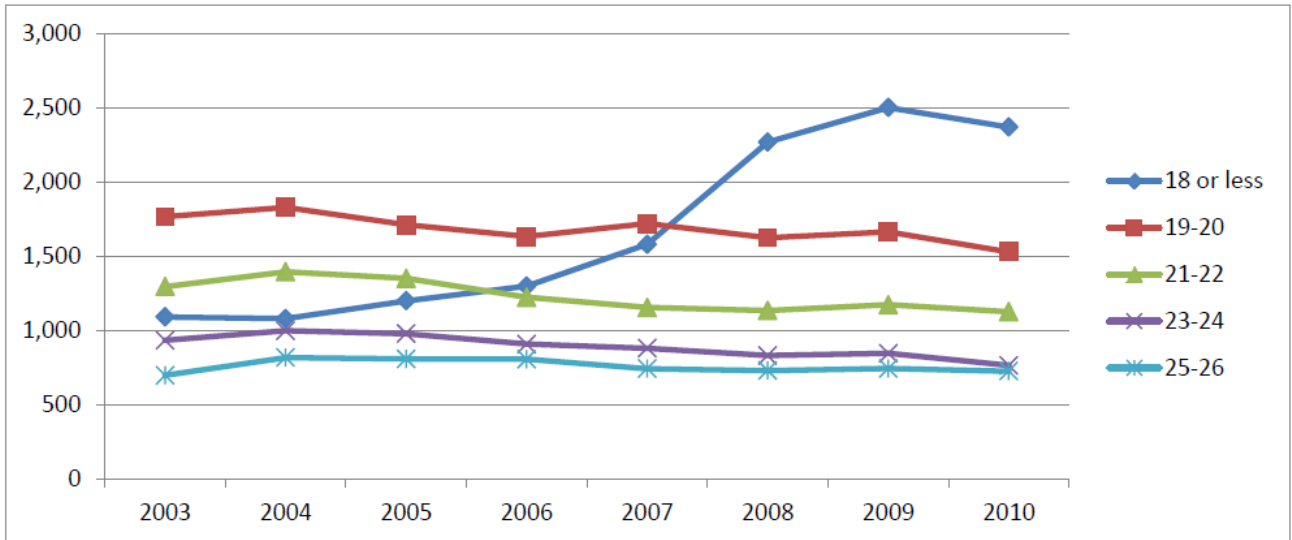


*Due to Banner implementation current data is not available.

**ST. PHILIP'S COLLEGE
AGE ENROLLMENT TRENDS**

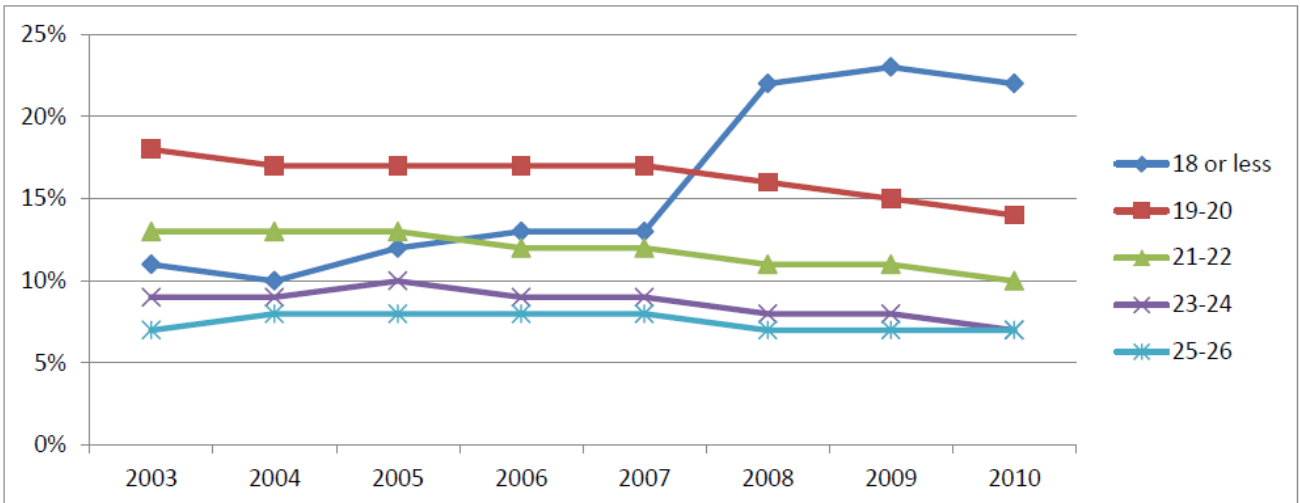
TOTAL STUDENTS

Fall	2003	2004	2005	2006	2007	2008	2009	2010
18 or less	1,092	1,080	1,200	1,300	1,582	2,271	2,504	2,373
19-20	1,768	1,831	1,713	1,634	1,722	1,627	1,666	1,531
21-22	1,296	1,397	1,352	1,224	1,155	1,136	1,174	1,127
23-24	934	999	979	909	881	832	846	765
25-26	698	818	809	806	743	730	744	726



PERCENTAGE

Fall	2003	2004	2005	2006	2007	2008	2009	2010
18 or less	11%	10%	12%	13%	13%	22%	23%	22%
19-20	18%	17%	17%	17%	17%	16%	15%	14%
21-22	13%	13%	13%	12%	12%	11%	11%	10%
23-24	9%	9%	10%	9%	9%	8%	8%	7%
25-26	7%	8%	8%	8%	8%	7%	7%	7%

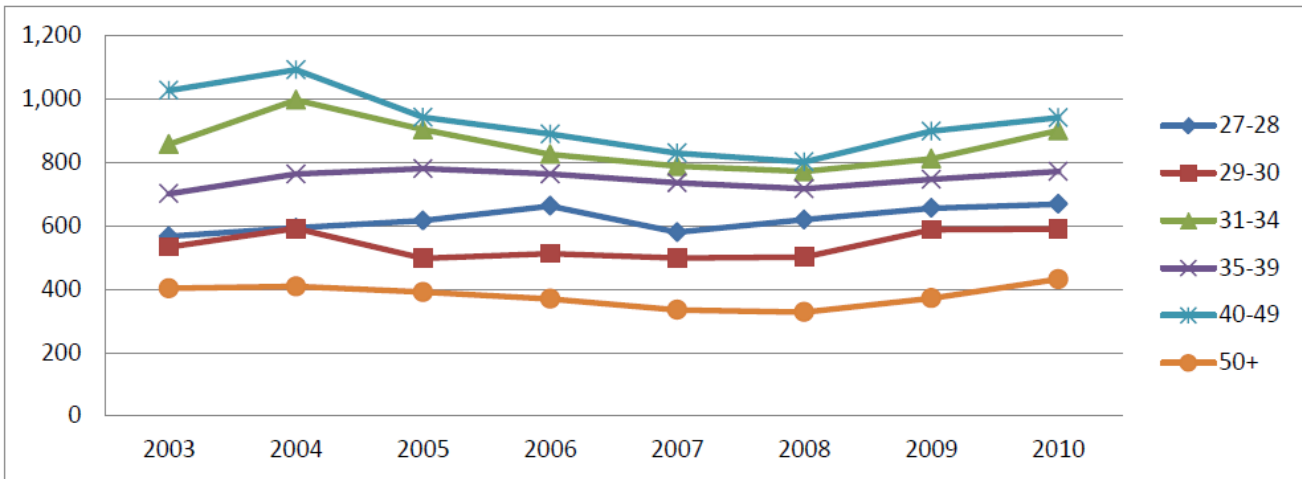


**ST. PHILIP'S COLLEGE
AGE ENROLLMENT TRENDS**

Continued

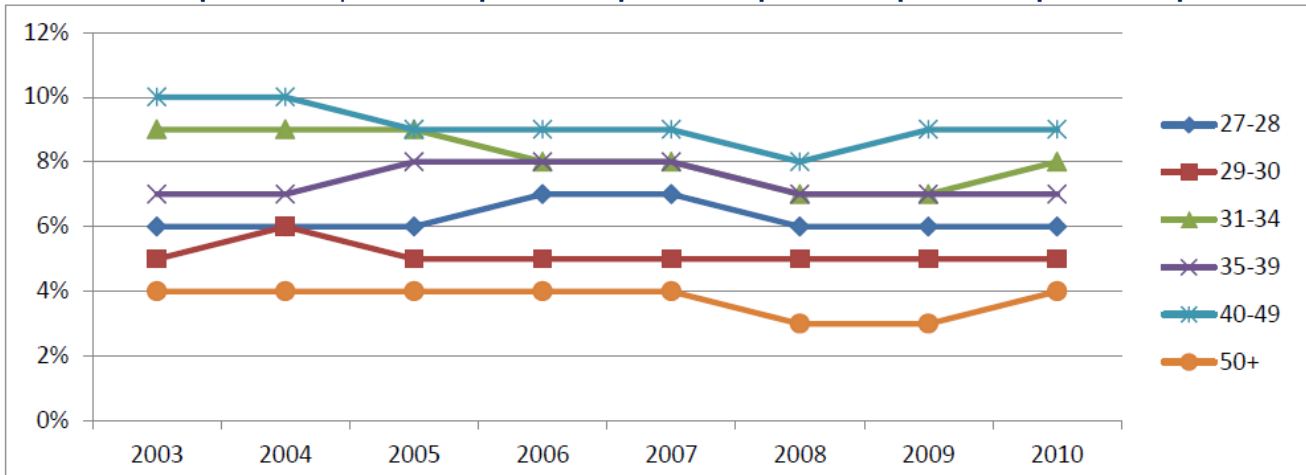
STUDENT AGE TRENDS

Fall	2003	2004	2005	2006	2007	2008	2009	2010
27-28	567	594	617	663	580	620	656	669
29-30	534	592	498	513	499	502	588	590
31-34	858	998	904	826	789	772	812	901
35-39	702	764	781	764	736	717	747	772
40-49	1,028	1,093	943	890	830	802	899	942
50+	403	409	391	370	335	328	372	432



PERCENTAGE

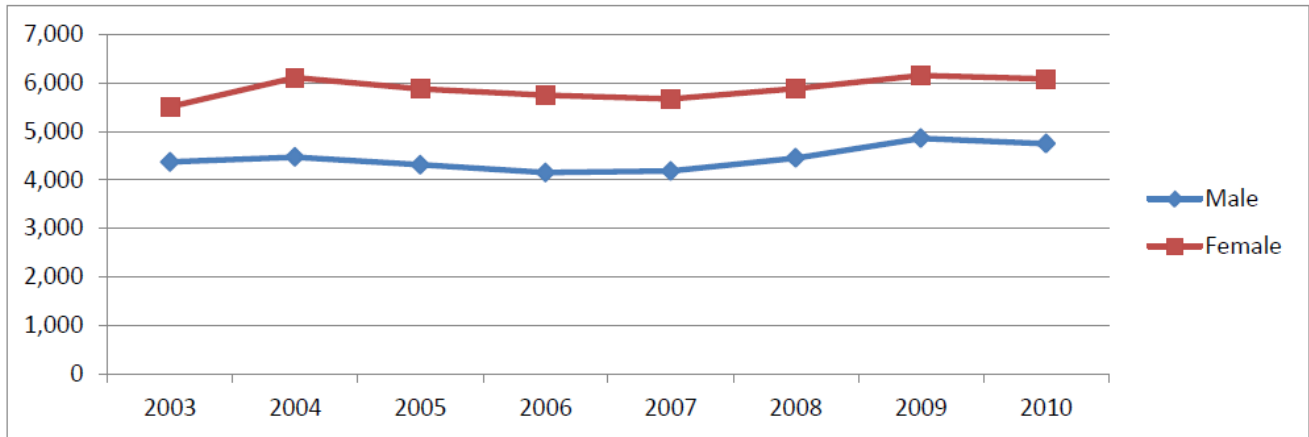
Fall	2003	2004	2005	2006	2007	2008	2009	2010
27-28	6%	6%	6%	7%	7%	6%	6%	6%
29-30	5%	6%	5%	5%	5%	5%	5%	5%
31-34	9%	9%	9%	8%	8%	7%	7%	8%
35-39	7%	7%	8%	8%	8%	7%	7%	7%
40-49	10%	10%	9%	9%	9%	8%	9%	9%
50+	4%	4%	4%	4%	4%	3%	3%	4%



ST. PHILIP'S COLLEGE GENDER ENROLLMENT TRENDS

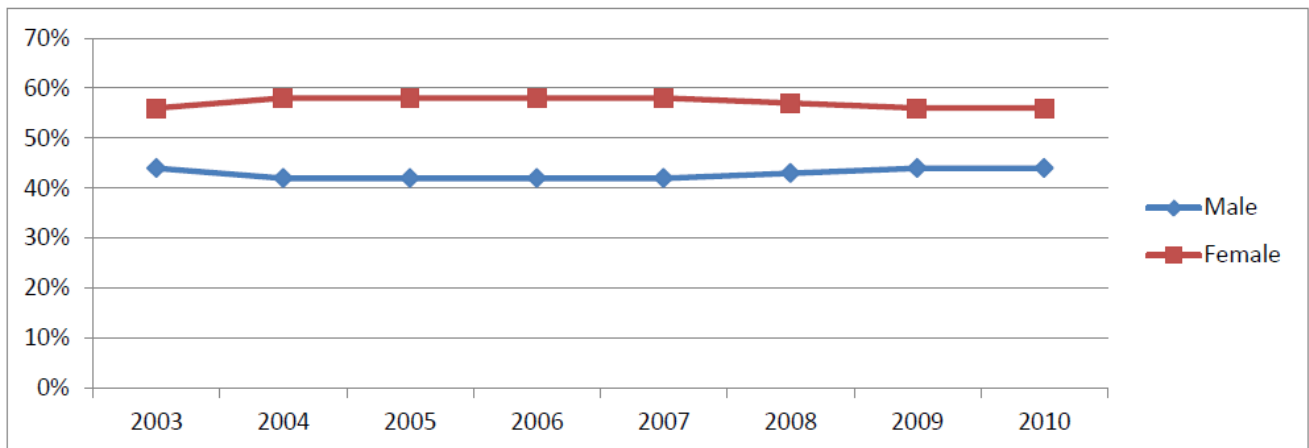
TOTAL STUDENTS

Fall	2003	2004	2005	2006	2007	2008	2009	2010
Male	4,372	4,470	4,312	4,150	4,185	4,453	4,858	4,747
Female	5,508	6,105	5,875	5,749	5,667	5,884	6,150	6,081



PERCENTAGE

Fall	2003	2004	2005	2006	2007	2008	2009	2010
Male	44%	42%	42%	42%	42%	43%	44%	44%
Female	56%	58%	58%	58%	58%	57%	56%	56%



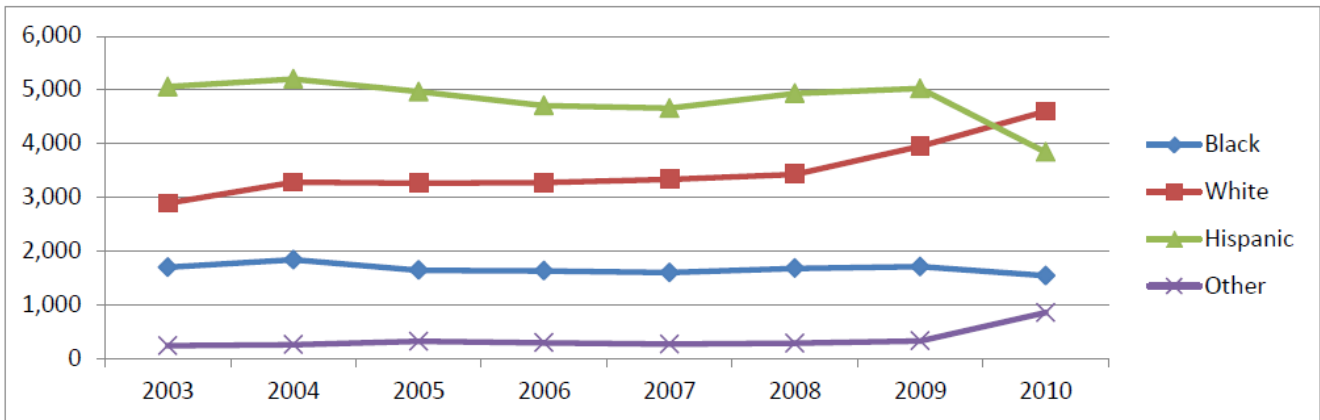
STUDENT AGE & GENDER TRENDS

Student Age & Gender Trend information is pending data access and availability. This page will be updated at a later time.

ST. PHILIP'S COLLEGE ETHNICITY ENROLLMENT TRENDS

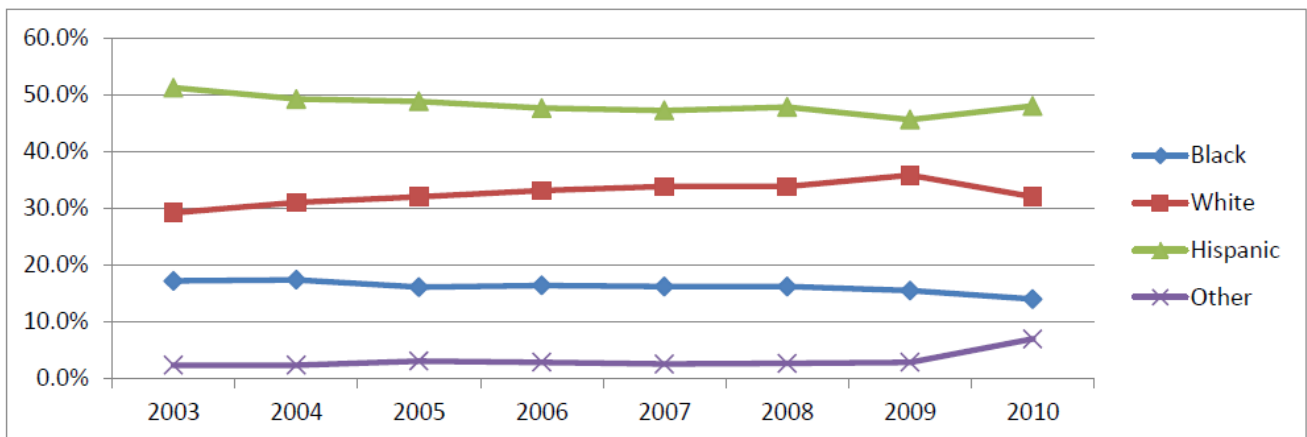
TOTAL STUDENTS

Fall	2003	2004	2005	2006	2007	2008	2009	2010
Black	1,696	1,837	1,640	1,628	1,596	1,675	1,709	1,538
White	2,889	3,280	3,264	3,272	3,334	3,428	3,947	4,598
Hispanic	5,060	5,201	4,967	4,708	4,658	4,935	5,025	3,840
Other	235	257	316	291	264	281	327	852



PERCENTAGE

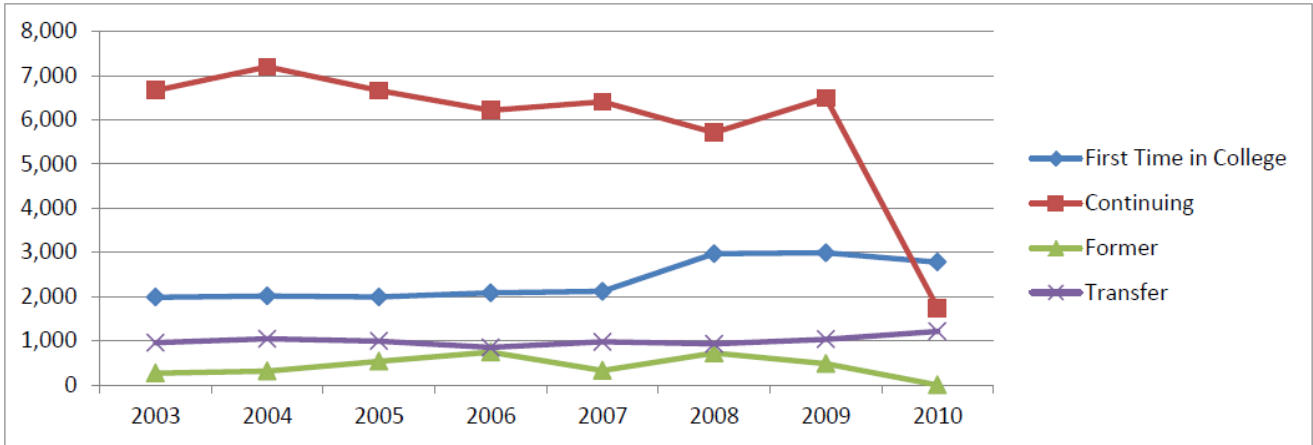
Fall	2003	2004	2005	2006	2007	2008	2009	2010
Black	17.2%	17.4%	16.1%	16.4%	16.2%	16.2%	15.5%	14.0%
White	29.2%	31.0%	32.0%	33.1%	33.8%	33.8%	35.8%	32.0%
Hispanic	51.2%	49.2%	48.8%	47.6%	47.2%	47.8%	45.6%	48.0%
Other	2.4%	2.4%	3.1%	2.9%	2.6%	2.7%	2.9%	7.0%



ST. PHILIP'S COLLEGE
FTIC Enrollment Trends

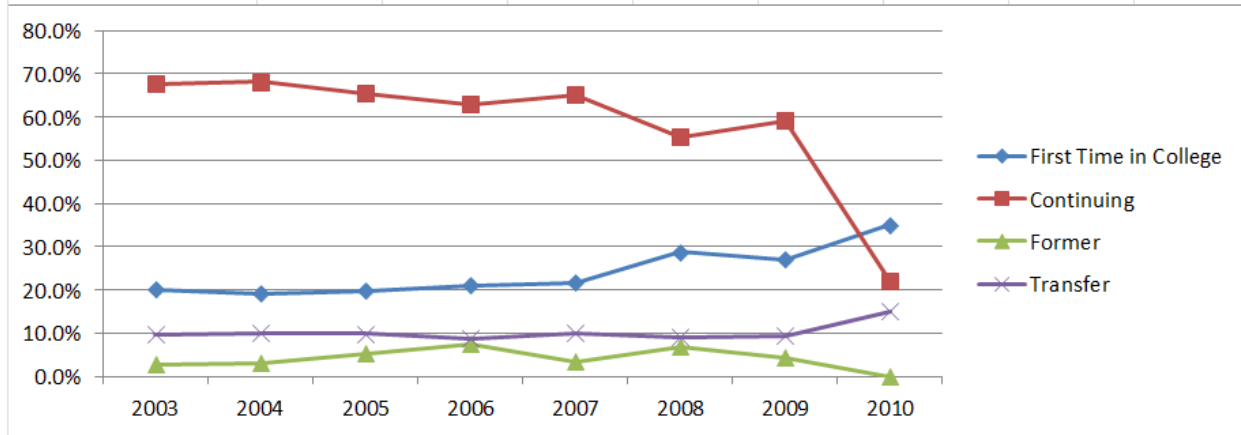
TOTAL STUDENTS

Fall	2003	2004	2005	2006	2007	2008	2009	2010
First Time in College	1,986	2,015	1,992	2,086	2,117	2,973	2,991	2,781
Continuing	6,669	7,201	6,665	6,220	6,410	5,715	6,499	1,742
Former	269	315	536	744	327	721	484	*
Transfer	956	1,044	994	849	977	928	1,034	1,216



PERCENTAGE

Fall	2003	2004	2005	2006	2007	2008	2009	2010
First Time in College	20.1%	19.1%	19.6%	21.1%	21.5%	28.7%	27.1%	35.0%
Continuing	67.5%	68.1%	65.4%	62.8%	65.2%	55.2%	59.0%	22.0%
Former	2.7%	3.0%	5.3%	7.5%	3.3%	6.9%	4.3%	*
Transfer	9.7%	9.9%	9.8%	8.6%	9.9%	8.9%	9.3%	15.0%



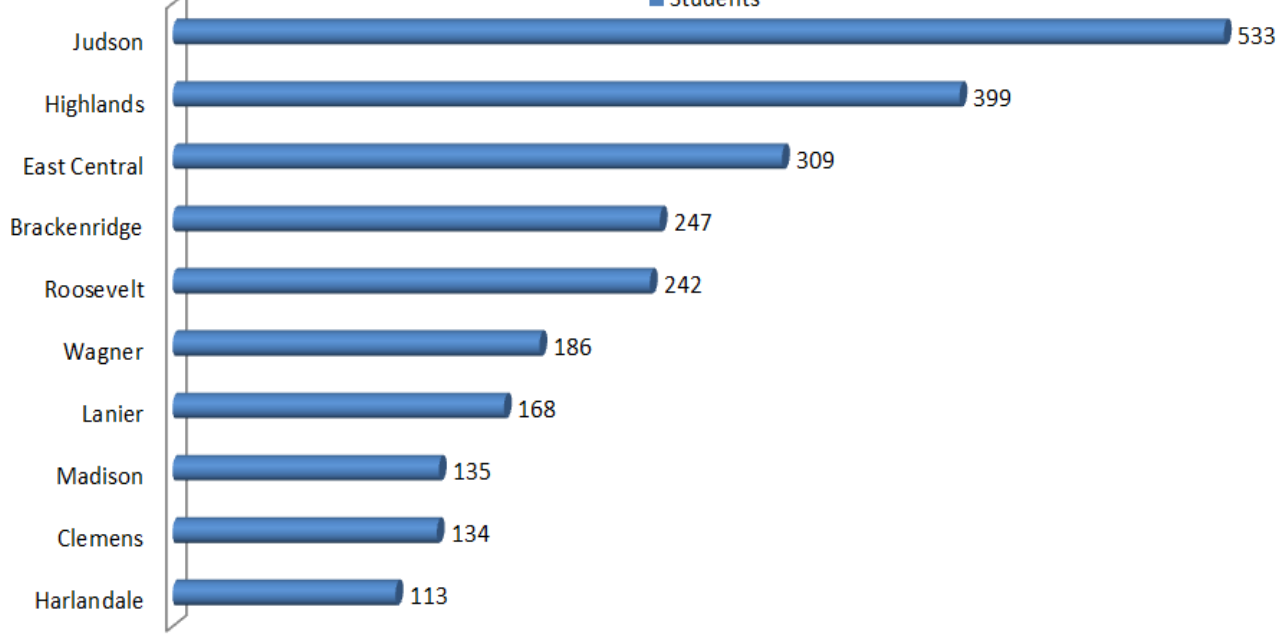
*Due to Banner implementation current data is not available.

**ST. PHILIP'S COLLEGE
TOP 10 FEEDER HIGH SCHOOLS**

FALL															
2003		2004		2005		2006		2007		2008		2009		2010	
Judson	85	Judson	109	Judson	67	Judson	72	Judson	39	Judson	70	Judson	68	Highlands	57
Highlands	54	Highlands	62	Highlands	56	Highlands	55	Wagner	30	Highlands	65	Wagner	59	Brackenridge	43
East Central	42	East Central	51	East Central	35	East Central	44	East Central	27	Wagner	57	Steele	58	Wagner	40
Roosevelt	38	Roosevelt	39	Clemens	33	Roosevelt	40	Brackenridge	26	East Central	37	Highlands	50	East Central	38
Brackenridge	33	Sam Houston	34	Southwest	32	Madison	30	Clemens	24	Brackenridge	34	Seguin	42	Madison	29
Lanier	30	Lanier	31	Roosevelt	26	Clemens	29	Burbank	22	Burbank	30	Lanier	36	Harlandale	25
Sam Houston	27	Madison	30	Burbank	25	Southwest	28	Lanier	21	Harlandale	27	East Central	35	Judson	23
Madison	26	Brackenridge	28	Lanier	24	Sam Houston	27	Roosevelt	19	Roosevelt	27	Fox Tech	34	Roosevelt	23
Clemens	24	Clemens	24	Brackenridge	23	Brackenridge	27	Harlandale	17	Memorial	27	Brackenridge	33	Southwest	20
Harlandale	21	Fox Tech	23	Memorial	20	Lanier	26	Seguin/Kennedy	10	Madison	20	Roosevelt	30	Burbank	19
Southside	21	Harlandale	23												

**TOP 10 FEEDER HIGH SCHOOLS
FALL 2003 - FALL 2010**

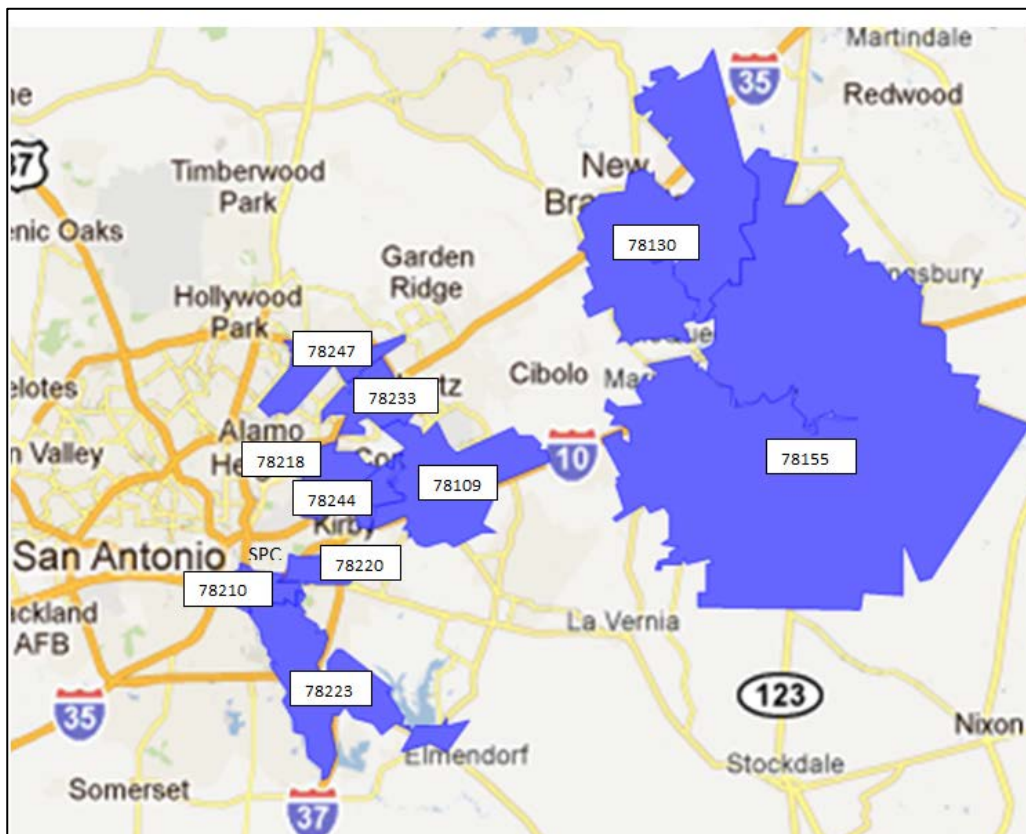
■ Students



**ST. PHILIP'S COLLEGE
TOP 10 FEEDER ZIP CODES**

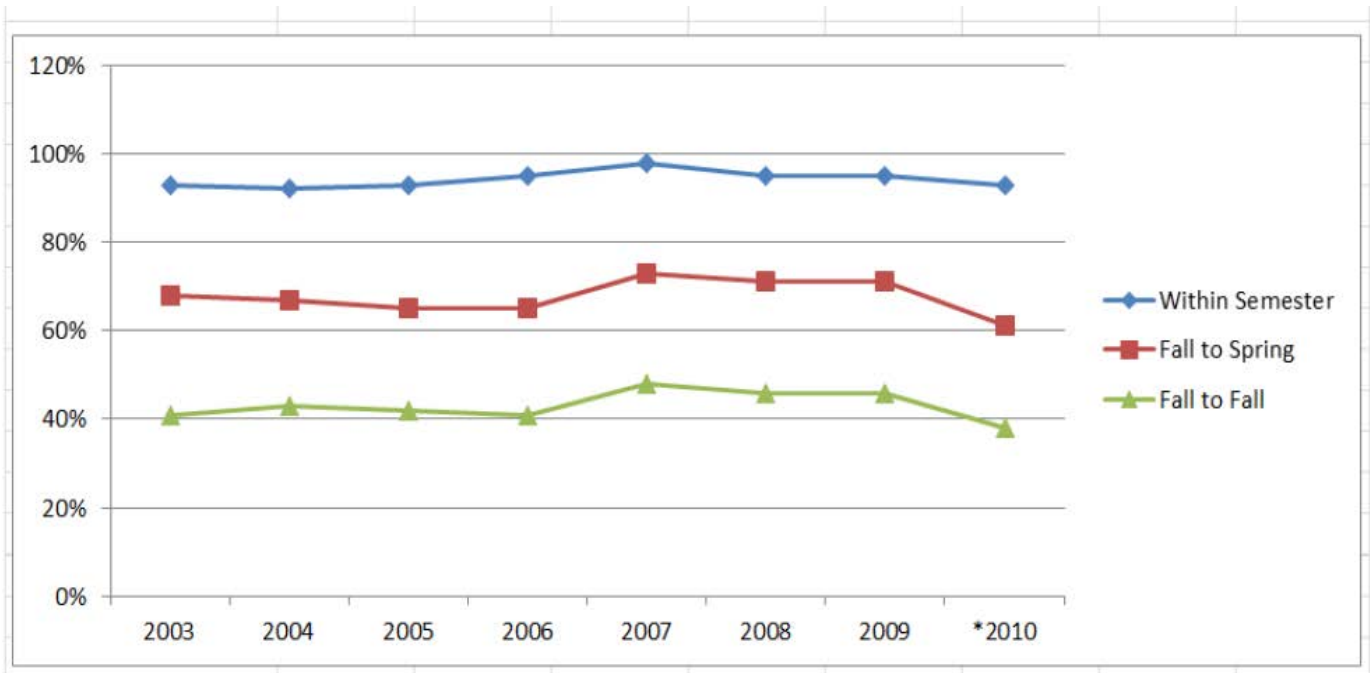
FALL

2003		2004		2005		2006		2007		2008		2009		2010	
78210	506	78223	479	78210	466	78210	448	78210	427	78109	497	78239	229	78223	476
78223	447	78210	470	78244	413	78223	417	78109	393	78210	417	78207	231	78210	471
78244	416	78244	455	78223	403	78109	399	7823	386	78244	409	78245	232	78244	409
78233	385	78233	391	78233	367	78233	372	78244	382	78223	399	78218	247	78109	386
78109	360	78109	381	78109	357	78244	359	78233	342	78233	384	78247	252	78155	338
78207	354	78220	354	78220	293	78247	276	78247	265	78155	377	78233	378	78130	308
78220	313	78218	316	78218	288	78220	261	78220	245	78130	326	78223	389	78233	305
78218	288	78207	306	78247	247	78228	285	78218	235	78220	282	78244	406	78218	264
78247	261	78217	287	78239	272	78218	245	78239	225	78239	274	78210	424	78220	252
		78228													
78239	258	78247	279	78207	269	78239	235	78228	222	78218	264	78109	439	78247	250



**ST. PHILIP'S COLLEGE
RETENTION TRENDS**

	PERCENTAGE							
Fall	2003	2004	2005	2006	2007	2008	2009	2010
Within Semester	93%	92%	93%	95%	98%	95%	95%	93%
Fall to Spring	68%	67%	65%	65%	73%	71%	71%	61%
Fall to Fall	41%	43%	42%	41%	48%	46%	46%	38%



DEFINITIONS

FTIC Student:	Student entering college for the first time with high school diploma or GED.
Continuing Student*:	Student that has been enrolled at St. Philip's College within one year.
Former Student:	Student that has not been enrolled at St. Philip's College for more than one year.
Transfer Student:	College student attending St. Philip's College for the first time.

*Includes some dual-credit students