

Student Success Newsletter

St. Philip's College, 1801 Martin Luther King Dr., San Antonio, TX 78203
St. Philip's College - Southwest Campus, 800 Quintana Rd., San Antonio, TX 78211

Important February Dates

- 1 Classes Begin & Smart Start (Start II-14 Week)
- 3 Census Date (16 Week)
- 12 Census Date (Start II-14 Week)
- 18 Pop-Up Markets at SPC (See info box on page 3)
- 26 Last Day to Withdraw (Flex I)

February 2021 Hours of Operation (Remote Access)

Monday, Tuesday, Thursday, Friday	8:00 am – 5:00 pm
Wednesday	8:00 am – 7:00 pm
First Saturday of the month	9:00 am – 1:00 pm

MESSAGE FROM OUR VICE PRESIDENT:

Greetings, St. Philip's College Students –

As you are settling in for the spring 2021 semester, be sure to take advantage of your FREE online academic support services offered through our [Tutoring and Technology Center](#). There you will find resources like Brainfuse, an online tutoring service available to students 24 hours a day, 7 days a week through your Canvas course. Have a successful and productive semester.

Mordecai Ian Brownlee, Ed.D.
Vice President for Student Success
St. Philip's College

AlamoCARES

For more information contact Dr. Mordecai Brownlee, Vice President for Student Success, at 210-486-2252.

If you believe you have experienced **Sexual Misconduct**, you may consider the following options:

- Contact **Campus Police** at 210-485-0099 (non-emergency) or 210-485-0911 (emergency)
- Seek **medical attention** at a hospital or with a physician
- **Report the incident** at www.alamo.edu/TitleIXCoordinator/ (or call John Martin 210-486-2746)
- **Contact SPC Counseling Services** at 210-486-2333 (for confidential counseling and or referrals)
- **Contact parents, relatives or close friends** for support

ATTENTION STUDENTS! All entering freshmen, former and transfer students are required to complete “**Sexual Assault Prevention for Community Colleges**”. *All entering freshmen, former and transfer students are required to complete the training before the end of their first semester of classes at St. Philip's College (to avoid placement of a registration hold on their account).* To access the **Sexual Assault Prevention for Community Colleges** training:

1. Always sign in through ACES at <https://alamoaces.alamo.edu>.
2. Look for the AlamoCARES box on the Student tab and read the important message before accessing the course. **Note:** an alternative training is available; see your Vice President for Student Success for assistance.
3. Click on the link provided, and complete the confidential pre-survey at the start of the course. The Alamo Colleges District does not receive a copy of your responses.
4. The Quiz at the end of the course is required to document completion on your student record. The Quiz Score is not used.

Note: Students who do not complete the training by the deadline will have a Registration Hold (T9) placed on their record. To ensure you do not have a Registration Hold on your record, log in to ACES → Student menu (on left) → Web Services → Student tab (top) → Student Records → View Holds. If you have a hold, email John Martin at jmartin139@alamo.edu. Include your full name, Banner ID# and contact information for prompt response.

Academic and Career Advising Services

For more information, contact Arianna Lay at 210-486-2381.

Tiger Nation thrives in Advising! Advising Services are online. Schedule an appointment with your Certified Advisor via Alamo NAVIGATE. Learn more at <https://www.alamo.edu/spc/academics/academic-resources/academic-advising/>.

Zoom Advising Instructions in Alamo NAVIGATE: → Log in to your [ACES](#) Account. → Click on the "Start Here" tab. → Select the "Alamo NAVIGATE" icon. → Click "Login". → Select the "Appointments" tab. → Select "Schedule an Appointment". → Select the Reason for your appointment and hit Next. → Select the Location and hit Next. → Select the Day and Time that works for you and hit Next. → Enter "Zoom Appointment" in the Notes box. → Review the selection and confirm your appointment.

Spring 2021 Drop-in Advising Services (online) for new students:

Monday	1:00 am – 5:00 pm	(https://alamo.zoom.us/j/93709178380)
Wednesday	5:00 pm – 7:00 pm	(https://alamo.zoom.us/j/94787915792)
Thursday	9:00 am – 1:00 pm	(https://alamo.zoom.us/j/93709178380)
First Saturday of the month	9:00 am – 1:00 pm	(https://alamo.zoom.us/j/94787915792)

New Student Orientation (NSO): NSO is **mandatory** for all First Time in College, Returning, and Transfer students enrolling at SPC. NSO is remote on a Canvas platform and accessible via your student [ACES](#) portal within 2-3 business days upon successful completion of the [Online Registration Form](#). The preferred browser for the course is Google Chrome. All students must have a current/active admissions application on file to register and participate in the Canvas course. Please visit our NSO site: <https://www.alamo.edu/spc/academics/academic-resources/academic-advising/new-student-orientation/>.

Group Advising: This activity provides for a group experience, and one-on-one assistance for registration, and is available upon request after completion of [NSO](#). Students must complete all steps in the [Enrollment Process](#) and [NSO](#) to schedule a Group Advising session. Access to the schedule is available within NSO online via Canvas.

Career Services: Contact Advising Team Leader Gilbert Palomo at spc-jobs@alamo.edu (210-486-2056). Learn more about our services [here](#).

Expanded Summer Momentum Plan (ESMP): Earn three to nine FREE credit hours. The ESMP is a scholarship, which covers tuition after award of all other financial aid resources. Eligible students can earn their degree in less time, save money, and use financial aid more effectively. See important details at <https://www.alamo.edu/news--events/news/2021/01-january/save-time-and-money-with-expanded-summer-momentum-plan/> and at <https://www.alamo.edu/keeplearning/expanded-summer-momentum-plan/>. Next, talk to your Certified Academic Advisor!

Return to Campus Plan: We will remain at Level 5 "Stay Home, Work Safe" through Feb. 14, 2021. All classes are remote learning, and all departments will operate remotely, during this time. Students should visit the [SPC Remote Ready Site](#) to contact departments as needed, or call the Student Help Line at 210-212-5266.

Bookstore

For more information, contact Jorge Marines at 210-534-8024 or <https://bit.ly/39SKXle>.

Students can purchase course material through our [website](#). Contact us Monday-Thursday (9am-5pm), and Friday (9am-1pm) by phone, or email (stphilips@bkstr.com) to inquire about textbook options, downloads, and discounts. Curbside pick-up through February 4.

Spring 2021 Registration and Payment Calendar

Registration for Flex II ends March 14 (classes begin March 22). See important registration and payments dates [here](#), or call 210-212-5266 if you have any questions.

Steps in the Enrollment Process:

- Complying with the bacterial meningitis law
- Completing the Go FAARR and Test Prep Modules
- Taking the TSI Placement Exam, or providing qualifying exemption scores
- Completing Refresher courses (if applicable)

SPC Faculty-Student Mentoring Program

The program offers students the opportunity to establish an academic relationship with a faculty member. Mentors discuss university transfer, workplace skills, and career aspirations. Learn more at

<https://www.alamo.edu/spc/academics/academic-resources/faculty-student-mentor-program/>.

Business Office

For more information, contact Sofia Zavala at 210-486-2247 or dst-vbo2@alamo.edu.

We can answer questions [about billing, Academic and Continuing Education Payment Plans, or tuition discounts and waivers](#). Provide your name, telephone number, email address, and Banner ID when calling or emailing.

Child Development Center

For more information, contact Monica Guzman at 210-486-2501.

The Child Development Center has limited childcare spots for virtual classes this spring 2021 semester, with on-campus childcare coming soon. We also provide parenting support for student-parents. Those interested in subsidized off-campus care with a partner childcare program may contact us (210-486-2500, or email mguzman15@alamo.edu). Eligibility and payment information is at <https://www.alamo.edu/spc/child-dev-center>.

City Workforce Recovery Program

For general questions, contact Workforce Solutions Alamo at 210-224-4357 or visit www.workforcesolutionsalamo.org.



Train for Jobs-SA offers training and education to eligible San Antonio residents displaced due to the COVID-19 pandemic. The program helps get people back to work, offers stipends, provides skills and career assessments, GED preparation, and on-the job training. Students in the program can earn \$15 an hour, to a maximum of \$450 a week this semester. See <https://www.alamo.edu/sarecovery>.

Counseling Services

For more information, contact Eitandria Tello at 210-486-2378.

We provide counseling support via Zoom. Call the Alamo Colleges Helpline (210-486-1111) to schedule an appointment. Always provide your name, telephone number, and Banner ID. See important links on our [website](#).

Texas Health & Human Services provides statewide crisis help. View online resources, or talk to someone at **Mental Health Texas** (1-800-273-8255, TTY: 1-800-799-4889, <https://mentalhealthtx.org/>). In case of an emergency call **The Center for Healthcare Services Crisis Hot Line** at 210-223-7233, or dial **9-1-1**.

The SPC Safe **SPACE** Student Success & Advocacy Center

For more information, contact Eitandria Tello at 210-486-2378.

We provide resources for food and social services assistance, and possible access to a one-time emergency aid program. For more information, contact Eitandria Tello via email at egatlin2@alamo.edu. Always provide your name, telephone number, and Banner ID.

Important Services and Resources:

- **San Antonio Food Bank (210-431-8326):** Their food pantries and mobile food distributions are open to the public. Find local options, or sign-up for state and federal benefits like SNAP. Pre-registration is required for citywide food distributions, home delivery, and rural distribution. To pre-register, or to browse the Meals for Kids distribution schedule and program rules, visit <https://safoodbank.org/cvresponse/>.
- **Utility and other bills:** City of San Antonio, Bexar County, SAWS and CPS. See Community Assistance Summary at https://media.wix.com/ugd/49c991_598a79d6f020473aba80ea8773381dae.pdf.

Virtual Welcome Center

We are hosting a [Virtual Welcome Center](#) (Mon.-Thurs., 9am–6pm), and the first Saturday of the month (9am–1pm). Join us at <https://alamo.zoom.us/j/94787915792> or use Meeting ID 947 8791 5792.

Friday Drop-in Advising is at <https://alamo.zoom.us/j/93709178380> or use Meeting ID 937 0917 8380.

Upcoming Pop-Up Markets at St. Philip's College:

February 18, 3-5pm, Lots 22/23

March 4, 3-5pm, Lots 22/23

Registration is required at SAFB 210-431-8326. View distribution calendar at <https://www.alamo.edu/advocacy>. Students or partners can volunteer at <https://www.alamo.edu/volunteer-form/>.

Let's be Resilient!

- * **About Resiliency** * **Resiliency Rising**
- * **Resiliency Resources**

Learn much more, and view videos, that build up our [Resiliency Skills](#).

- **Alamo Colleges Advocacy Helpline (210-486-1111):** Call the Helpline to connect with state benefits and locate important resources. The Helpline is available Monday-Thursday (8am-7pm); Friday (8am-5pm); and the first Saturday of the month (8am-1pm).
- **United Way - COVID-19 Resources and Assistance (2-1-1, 210-227-4357 or 1-877-541-7905):** Call or access the online [database](#). This free, anonymous social service hotline helps people find resources in their community (accessible 24/7 including holidays).

Disability Services

For more information, contact Maria Botello at 210-486-2199.

To get support with disability services please contact us at [spc-dss@alamo.edu](mailto:dss@alamo.edu) or call 210-486-2199. Provide your name, telephone number, email address, and Banner ID when calling or emailing. For more information and access to the online registration system, visit <https://www.alamo.edu/spc/experience-spc/current-students/support-centers/disability-services/>.

Good Samaritan Veteran's Outreach & Transition Center-GSVOTC

For more information, contact us at spc-gsvotc@alamo.edu or at 210-486-2185.

We provide free services to active duty service members, veterans, their families and the community. Call us Monday-Friday (8am-5pm). Visit <https://www.alamo.edu/spc/about-spc/college-offices/gsvotc/>.

International Student Services

For more information, contact Meredith Bess, 210-486-2147.

Find resources for F-1 and M-1 visa holders at <https://www.alamo.edu/spc/admissions/specific-populations/international-student-services/>.

Library Resources and Services

For more information, contact April Schramm (210-486-2357) or Susan McClellan (210-486-2330).

Our Website has undergone a face-lift! Come by and check it out at <https://www.alamo.edu/spc/library>. The Library offers virtual reference services (see Library Virtual Hours). If you need reference assistance, use our **ASK US** feature and chat service found at the top of our [homepage](#).

Important Update: All checked-out material for the Library will be due February 28, 2021. We have automatically extended the due dates. Please hold on to your checked-out material until we return to campus. There is no receptacle on campus for drop-off at this time. See our website for updates and information.

Resources: See our [Distance Education Student Resources Guide](#) and [SPC Coronavirus Resource Guide](#) with resources on all-things-COVID-19, as well as fun activities for families and children.

Social Media: See more of St. Philip's College Library on Facebook: <https://www.facebook.com/St-Philips-CollegeLibrary-103458268027093/> and Twitter: <https://twitter.com/Spclibraryspc>.

City of San Antonio Fair Housing/COVID-19 Emergency Assistance Program

San Antonio residents can call 210-207-5910 or 311 for information, or apply online at <https://www.sanantonio.gov/NHSD/Programs/FairHousing>. Eligible residents can get help with:

- Rent or mortgage payments
- Electricity and water bills
- Internet and phone bills
- Groceries, Medicine, Fuel

New: Get in-person help with the [Emergency Housing Assistance Program](#) application (by appointment) from **Texas RioGrande Legal Aid (TRLA)**, Ileana Rojas, 210-337-1525, ehap@trla.org (English/ Spanish); **Domesticas Unidas**, Irasema Cavazos, 1-956-245-2657, cavazosirasema@gmail.com; and **COPS/Metro** at these church locations:

- Divine Providence, Father Ryan Carnecer, frryancicm@gmail.com
- St. Timothy, Natalie, sttimothyseniorcenter@yahoo.com
- Our Lady of the Angel, Father Bill Kraus, bill.kraus@capuchins.org
- Sacred Heart, Maria "Lupita" Valdez, mgvaldeza63@gmail.com

Spring 2021 Virtual Hours:

Mon. – Thurs.: 7:00 am – 8:00 pm
Friday: 7:00 am – 5:00 pm
Saturday: 10:00 am – 3:00 pm

Hours are subject to change. Refer all inquiries to our [ASK US](#) feature (monitored and answered on these days).

SPC Archives: We are gathering documentation on how the SPC community is responding to the COVID-19 pandemic, and you can help! If you are keeping a record of your experience working and/or learning remotely, or have any documentation that reflects the current situation, please consider sharing it with the SPC Archives. Contact Rebecca Barnard at 210-486-2583 or rbarnard3@alamo.edu to contribute.

Centers of Excellence for Math & Science

For more information contact Maria Rodriguez at 210-486-7123, or Dr. Jo Dee Duncan at 210-486-7121 or visit our website at

<https://www.alamo.edu/spc/academics/academic-resources/academic-centers/centers-of-excellence/>.

Apply for stipends to serve and engage our community through STEM outreach programs. Opportunities exist year-round and can range from single day events to 8-week programs. Text STEM to 55000.

Math Labs

For more information contact Renita Mitchell at 210-486-2607, or see fall 2020 availability chart at <https://alamo.instructure.com/courses/1292202>.

Virtual MathWorld: Remote tutoring services are available for our students in developmental **MATH courses**, as well as **MATH 1314, 1332, 1350, 1351, 1414, 1442, 2412** and **2413**. Access **Virtual MathWorld** by clicking on the link (provided by your instructor) within your math Canvas course. Here you will find our schedule of Zoom tutoring drop-in sessions. Learn more or rate our services at <https://www.alamo.edu/spc/academics/academic-resources/tutoring-centers/mathworld/>, or contact Pete Perez at 210-486-2893 (pperez198@alamo.edu).

Southwest Campus Virtual Math Emporium and Math Bridge Program: Access the **tutoring lab** within your canvas course. Remote services are available for our students in developmental **MATH courses**, as well as **MATH 1314, 1332, 1350, 1351** and **1414**. Visit <https://www.alamo.edu/spc/academics/academic-resources/tutoring-centers/mathemporium/>, or contact Paula Englebert (210-486-7070 or at penglebert@alamo.edu).

Military Support Services

Serving Active Military & Dependents

For more information, contact Betsy Hamilton at 210-486-2610.

Please visit our websites below for updates on spring 2021 Joint Base San Antonio programming.

Email Support: dst-military@alamo.edu

Phone Support at the following numbers: (Monday-Friday from 0800-1700)

General Information	Mrs. Sarai Carpenter	(210) 486-2001	https://www.alamo.edu/spc/mss
Fort Sam Students	Ms. Allison Joubert	(210) 486-2004	https://www.alamo.edu/fortsam
Lackland Students	Mr. Javier Barron	(210) 486-7224	https://www.alamo.edu/lackland
Randolph Students	Mrs. Cynthia Jaime	(210) 486-2901	https://www.alamo.edu/randolph

Air Force General Education Mobile (GEM) Program: St. Philip's College is an original and continuing participating college in the GEM program. Register for pre-approved SPC online courses to complete your CCAF degree. Ask your Air Force Education counselor about GEM! For more information visit www.alamo.edu/gem.

Military Spouse Scholarship Program (MyCAA): The My Career Advancement Account Scholarship Program is a workforce development program that provides up to \$4,000 of financial assistance for licenses, certifications, or Associate's degrees to pursue an occupation or career field. To see if you qualify visit www.alamo.edu/mycaa.

VIA Bus U-Pass

Available to Alamo Colleges Students and Employees

The **U-Pass** gives you access to unlimited bus rides on VIA through-out the semester -- with free high-speed Wi-Fi on all buses and transit centers, you can spend more time reading, studying, checking e-mails and staying connected. Learn more at www.alamo.edu/via.

Use the **VIA goMobile Mobile Pass (preferred)** using your student or employee email address. Visit www.viainfo.net/purchase-passes/.

Academic Centers

Learn about the Centers of Excellence, Cybersecurity Center, and Simulation Center at

<https://www.alamo.edu/spc/academics/academic-resources/academic-centers/>.



Web Session Wednesdays with MSS! Through 14 May, Military Support Services is offering free information sessions each **Wednesday from 1400-1500** in Zoom on topics relevant to our military and veteran-connected community. Topics include but are not limited to, financial aid, how to effectively research online, the military spouse scholarship program (MyCAA), Healthcare and LVN/Military to A.D.N. programs, military to civilian resume writing, IT and cybersecurity careers, and career and job market research. Join us for a topic each day in May during Armed Forces Week! Visit our webpage to view the full schedule at <https://www.alamo.edu/spc/mss>.

Project QUEST

For more information contact Yolanda Williams at 210-630-4691 or apply at <https://www.questsa.org/>.

We offer financial assistance and training in healthcare, manufacturing and trades, and information technology for eligible residents. We provide financial resources, guidance, and job placement. We can help you achieve your educational and career goals.

Records, Registration, and Transcripts

For more information, contact Tracy Shelton at tshelton@alamo.edu.

Weather Hotline 210-485-0189

Visit our website to find [enrollment forms](#) or to request [transcripts](#): <https://www.alamo.edu/spc/experience-spc/current-students/records-and-transcripts/>. Incomplete "I" grades are in the [spring 2021 Academic Calendar](#). To schedule an appointment for Academic Fresh Start, Conditional Admissions, Early Admissions, and more send email to spc-records@alamo.edu. Always include your name, banner number, email address, and telephone number. Contact us at 210-212-5266 to let us know how we can help!

SPC Feed the Tiger



Do you have something to share, like a great experience with a service, or perhaps you want something addressed? You can do that with our "Feed the Tiger" form. We want to hear from you and address your concerns. Click on the orange button at <http://spcweb.alamo.edu/feedback/index.html>.

Alamo Colleges Signing Up 2nd Cohort of Students for No-Cost College through AlamoPROMISE

Eligible high school seniors of the class of 2021 can sign up to be **AlamoPROMISE Scholars** by filling out the **Save Your Seat form** at www.alamo.edu/promise. Pledge by **February 15, 2021** to have your tuition covered. After completing a few more steps, prospective students will be able to participate in the program, which provides funds to bridge the gap between their financial aid award, and the cost of tuition and fees for up to three years. Prospective students can attend any of the five Alamo Colleges (St. Philip's College, San Antonio College, Palo Alto College, Northwest Vista College and Northeast Lakeview College) **at no cost**. **AlamoPROMISE Students** get one on one virtual help completing the **FAFSA or TASFA Application** for 2021-2022. Join Feb. and March sessions with [meeting ID 95822890808](#). See [AlamoPROMISE Financial Aid Help Sessions](#).

SPC Student Health Centers

For more information, contact Russel Adamski at 210-486-2222 (MLK Campus), or Paul Gonzalez at 210-486-7161 (SWC Campus).

Get your start at SPC

Licensed nurses staff the Student Health Centers (Monday-Friday, 8am-5pm) at **MLK** (Sutton Learning Center, Room 127); and **SWC** (Industrial Technology Center, Bldg. 1, Room C-100).

Protect your health. See helpful information and resources at <https://www.alamo.edu/spc/experience-spc/current-students/student-resources/student-health-center/>.

Did you know? High blood pressure (HBP) is a "silent killer". → Now defined as readings of 130 mm Hg and higher (systolic blood pressure) or 80 mm Hg and higher (diastolic measurement), a change from the old definition of 140/90, reflecting complications that can occur at lower numbers.

→ Read about HBP [symptoms](#), contributing physical traits and lifestyle choices ([greater risk for HBP](#)), and damage caused if left untreated ([heart attack](#), [stroke](#) and other [health threats](#)).

Source: <http://www.Heart.org>.

Wellness 360 Healthcare

No Insurance? Virtual healthcare is available for Alamo Colleges students at 210-485-0571, M-F, 8am-5pm. Visit alamo.edu/wellnes360.

Experiential Learning Opportunities in Handshake

For more information, contact Nathan Martinez at 210-486-2468.

Handshake is the new student portal to connect students with job, internship, fellowship and volunteer opportunities. Visit <https://alamo.joinhandshake.com/login> and use your ACES credentials to login. Here are additional links for instructional videos and articles and resources from Handshake: [Getting Started with Handshake](#) and [Video: Search for, Save, and Apply to Jobs in Handshake](#). Students needing help setting up their Handshake profile or searching for internships can contact Nathan Martinez (210-486-2468 or email nmartinez324@alamo.edu).

Student Financial Aid Office

For more information contact Grace Zapata 210-486-2269.

Contact us at 210-212-5266 or via email dst-sfs@alamo.edu. Include your Banner ID when contacting us. Inquire about FA applications, direct loan requests, FA appeals, and more. See [priority dates and deadlines](#). **Financial Aid TV** is available 24/7. Get your questions answered with [FaTV](#). We are here to help!



College Connection: First time in college students can get help completing a 2021-2022 FAFSA or TASFA to ensure personal information submitted on both FAFSA/TASFA match the **ApplyTexas** application. (Students are encouraged to complete the **ApplyTexas** application before submitting a FAFSA/TASFA.) Students/parents must use their 2019

Tax Return and/or 2019 Untaxed Income information to complete the 2021-2022 FAFSA/TASFA. Visit <https://www.alamo.edu/about-us/offices-departments/departments/college-connection/>. SPC College Connection staff are at 210-486-2150 or via email SPC-recruit@alamo.edu.

Student Life

For more information, contact Dr. Angela McPherson Williams at 210-486-2090.

Event: AlamoEXPERIENCE
Date/Time: February 1 – 28
Location: Student ACES Account
Summary: AlamoEXPERIENCE helps you explore your passions, view and RSVP for events, connect with student organizations, and capture your involvement experiences by building your Experience Transcript. Explore <https://alamo.campuslabs.com/engage/> (and set up your account during the first sign-in.)

Event: Guidebook (Online App)
Date/Time: February 1 – 28
Summary: The Guidebook phone app allows you to stay connected to Student Life while on the go! Download at <https://guidebook.com/g/spcdsl> to receive real-time push notifications, access to event links, and need-to-know engagement information. **Android and iOS users:** → Tap "Download" for the free app → Open Guidebook and find our "St. Philip's College Department of Student Life" guide.

Event: Student Government Association (SGA) Applications

Date/Time: Deadline is February 25

Location: AlamoEXPERIENCE

Event: Temple Grandin-Learning Differently
Date/Time: Feb. 12, 11:30am-12:30pm
Location: [AlamoEXPERIENCE](#) (register today)

IMPORTANT DETAILS here: [Financial Aid Saturdays and FAFSA Nights](#)

→ **Financial Aid Saturdays (9am-1pm):**

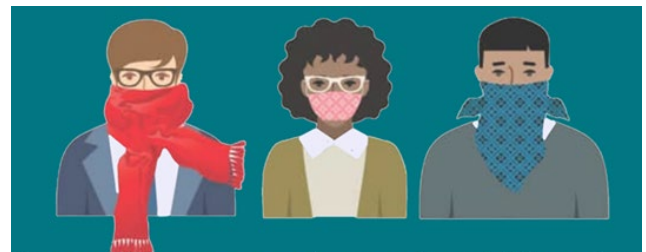
Feb 6, Mar 6, Apr 3, May 1

→ **Virtual FAFSA Nights (6pm-7pm):**

Feb 17, Feb 25, Mar 1, Mar 16

Join at

<https://alamo.zoom.us/j/98119765948>



Face coverings are not a replacement for social distancing, frequent handwashing, and self-isolation when sick.

What will it take to slow the spread of COVID-19? #DoItForSA, #HazloPorSA

Private-Sector Work-Study Program

Preparing Students for Careers: Learn about off-campus work-study positions (earn-and-learn opportunities). Program details are at <https://www.alamo.edu/pws>. Contact us today (210-485-0142; email dst-careerprep@alamo.edu).

Summary: WE WANT YOU to join the Student Government Association (SGA)! If you are interested in serving as the voice of the student body, and working with College administration to improve the student experience, complete an application. Apply for Officer or Commissioner positions at <https://alamo.campuslabs.com/engage/submitter/form/start/457203> by February 25. Contact Dr. Mac at awilliams284@alamo.edu or 210-486-2090 if you have any questions.

Event: **QEP: Quality Enhancement Plan**

Date/Time: February 1 – 28

Location: AlamoEXPERIENCE

Summary: Complete the “What Do You Do?” Ethical Decision-Making scenario for the week at <https://alamo.campuslabs.com/engage/organization/spc-quality-enhancement-plan>.



Event: **Educational Support Services Zoom Meetings (Online)**

Date/Time: February 1, 4, 8, 11, 15, 18, 22, and 25

Mondays (9:00 am – 12:00 pm), and Thursdays (2:00 pm – 5:00 pm)

Summary: The Department of Student Life will assist with your questions about St. Philip’s College. To join click on the link <https://alamo.zoom.us/j/660619244> or use Meeting ID 660 619 244.

Event: **Spring 2021 Club Rush Virtual Recruitment Fair**

Date/Time: February 3 11:00 am – 1:00 pm

Location: AlamoEXPERIENCE

Summary: The Department of Student Life invites you to learn about SPC student clubs and organizations, and explore ways to get involved! This is a come and go event, so drop in anytime to meet and greet organization leaders or view their club recordings. Prizes and attendance credit is provided to all SPC students who attend. Join at <https://alamo.campuslabs.com/engage/event/6659140>.

Event: **Spirit Day/Zoomin' with the Department of Student Life: Tiger Nation United! (Online)**

Date/Time: February 3, 10, 17, and 24 12:00 pm – 1:00 pm

Summary: Wear your favorite St. Philip’s College shirt or wear our school colors – royal blue and white. Like our page and post your picture on Instagram at <https://www.instagram.com/spcspiritandpridecrew/>. Join at <https://alamo.zoom.us/j/211938372> or use Meeting ID 211 938 372.

Event: **National Wear Red Day**

Date/Time: February 5

Summary: Please wear red to bring greater attention to heart disease as a leading cause of death for Americans. Cardiovascular disease is the number one killer of women.

Event: **Diversity, Equity, and Inclusion Discussion: Micro-Aggressions (Online)**

Date/Time: February 10 1:00 pm – 2:00 pm

Summary: Our guest speaker is Latasha Teamer, LPC. Register in advance at <https://alamo.zoom.us/meeting/register/tj0vduqrjMtHNS6fWkLjU--cyHurtnOSfUX>. After registering, you will receive a confirmation email containing information about joining the meeting.

Event: **12th Annual Red Dress Event for Women’s Heart Health (Online)**

Date/Time: February 11 12:00 pm – 1:00 pm

Summary: Join us! Wear red and celebrate women’s heart health. Register at <https://alamo.zoom.us/meeting/register/tjMqceyvzrzsHtX8zBxRmvrfSTC67oeQyZg>. After registering, you will receive a confirmation email containing information about joining the meeting.

Event: **Black History Month Reflection Activity**

Date/Time: February 15 –19 Ongoing

Location: AlamoEXPERIENCE

Summary: How can past accomplishments of African-Americans inspire this generation to make a positive impact for the future? Join at <https://alamo.campuslabs.com/engage/submitter/form/start/462977>.

Event: **A Celebration of Black Excellence in STEM (Online)**

Date/Time: February 16 1:00 pm – 2:00 pm

Summary: Phillip Hargrove shares his journey of growing up in San Antonio, a love of science, and his dream job at NASA. Register at https://alamo.zoom.us/meeting/register/tj0kdeCvrj0rEtW0W4YF_XAMeFrNH_LKjDBQ. Register to receive a confirmation email containing information about joining this meeting.

Event: **Diversity, Equity, and Inclusion Discussion: Power and Privilege (Online)**

Date/Time: February 17 1:00 pm – 2:00 pm

Summary: Register at <https://alamo.zoom.us/meeting/register/tjMsde6urj4jGtfdB7fCzfesgsUkqOpzsGwb> and receive a confirmation email containing information about joining this meeting.

Event: **Lunch and Lead Session**

Date/Time: February 19 10:00 am – 11:00 am

Location: AlamoEXPERIENCE

Summary: Join us for an engaging hour of leadership, event planning, support, and essential updates from the Department of Student Life. Join at <https://alamo.campuslabs.com/engage/event/6472176>.

Event: **Cooking with SPC**

Date/Time: February 22 2:00 pm – 3:00 pm

Location: AlamoEXPERIENCE

Summary: Join us for healthy eating tips, watching videos, and sharing recipes. To join click on the link <https://alamo.campuslabs.com/engage/event/6636898>.

Event: **Black History Month Event: Acting Up and Getting Down: Black Theatre in Texas (Online)**

Date/Time: February 24 11:00 am – 12:00 pm

Summary: Our guest speaker is Dr. Sandra Mayo. Register at <https://alamo.zoom.us/meeting/register/tjcv-2tqz8sHNXPx0FTztOijkZtVxPPW-M> and look for confirmation email containing information about joining this meeting.

Event: **Wellness Wednesday**

Date/Time: February 24 2:00 pm – 3:00 pm

Location: AlamoEXPERIENCE

Summary: Join us as we celebrate meaningful dialogue about heart health and blood pressure. To join click on the link <https://alamo.campuslabs.com/engage/event/6636955>.

Tutoring Services & Service Learning

For more information, contact Elizabeth Castillo at 210-486-2473.

Financial Literacy Program

Event: **Free Online Financial Coaching**

Date/Time: By appointment

Location: <https://www.mosaiec.org/coaching/>

Summary: Learn how to make smart financial decisions. For more information, contact Enida Rehome (210-486-2140).

Event: **Video Tutorials, Resources and Quick Links (Online)**

Date/Time: Ongoing

Summary: View video tutorials at <https://www.alamo.edu/spc/experience-spc/current-students/safe-space/financial-literacy-services/>. For more information, contact Enida Rehome (210-486-2140).

Tutoring Services

Tutoring is available online through **Brainfuse** or **Zoom** by appointment. Learn more at <https://www.alamo.edu/spc/academics/academic-resources/tutoring-centers/tutoring-and-technology-center/> or contact Jared Boggs (210-486-2527).

Brainfuse Online Tutoring: Learn about Brainfuse [here](#). Students have access to 420 minutes of free Brainfuse tutoring through your CANVAS courses. For additional minutes, contact Liz Castillo (ecastillo262@alamo.edu).

Veterans Affairs

For more information, contact Veronica Griego at 210-486-2540.

Veterans Affairs Certified Ac. Advisors:

Tony Gable (O-Z), lgable@alamo.edu, 210-486-2521

Alicia Stolte (Gb-N), astolte2@alamo.edu, 210-486-2539

Vincent Garcia (A-Ga), vgarcia365@alamo.edu, 210-486-2522

Reach us at 210-486-2111 or spc-vetaffairs@alamo.edu. See our list of services and helpful contacts at <https://www.alamo.edu/spc/admissions/specific-populations/military-dependents/veteran-affairs/>.

Laptop and Internet Hotspot Checkout Available for Students

Loaner laptops and internet hotspots are available for students at no cost through **Information Technology (IT) Services (210-486-2777)**, or via email at spc-helpdesk@alamo.edu.

(To get help for Network or ACES Password issues contact Alamo Colleges District Support Central, 210-485-0555.)

Tiger PAWS: Get published and win prizes! Be an editor and compete for scholarships! Tiger PAWS literary art journal seeks students to submit writing and artwork or sign up to be an editor. [Learn more.](#)

Scholarships and Giving Back Opportunities

Student Engagement Grants (SEG): Are you a full-time student with a GPA of 2.5 or higher? You may qualify for a \$1,000 SEG Scholarship (<https://www.alamo.edu/spc/admissions/pay-for-college/scholarships/seg/>).

SPC Scholarship Office

For more information, contact Gloria Hernandez at 210-486-2498. To donate or apply go to <https://www.alamo.edu/spc/admissions/pay-for-college/scholarships/>.

San Antonio Area Foundation Robert B. Taylor Scholarship: All students are encouraged to apply. Over 100 scholarship funds are available for graduating high school students and current college students.

Deadline: N/A

Scholarship Amount: Varies

Greater Texas Foundation Child Care Scholarship: Complete the application on the [scholarship website](#) if you can answer yes to each question: (1) Are you a single parent? (2) Do you have a child 0-12 years of age? (3) Are you enrolled in at least 12 semester hours? (4) Is your child enrolled in a day care facility?

Extended Deadline: March 2021

Scholarship Amount: Varies

Harvey Najim Pathways: Must be graduating from a high school in one of these ISD's: East Central, Edgewood, Harlandale, San Antonio, South San, Southside, Southwest, or Somerset. Pursue a degree in Cyber-Security, Information Technology, Nursing, or Respiratory Care.

Deadline: N/A **Scholarship Amount:** \$2,500

College for All Texans - Educational Aide Exemption (EAE): This is available to eligible students taking courses toward teacher certification and pays for tuition/required fees for coursework in the semester for which it is applied. The Advisor-Cert-Form is also available in the student Student Financial Services office. Visit <http://www.collegeforalltexas.com/apps/financialaid/tofa2.cfm?ID=572> or contact Alan Ahmad (210-485-0613).

The White House Initiative on Historically Black Colleges & Universities: Offers full-time internships year-round, in Washington DC at the US Department of Education. Learn more or apply at <https://www2.ed.gov/students/prep/job/intern/index.html>.

Winter/Spring Deadline: October 1 (Program Dates: January-May)

Summer Deadline: March 15 (Program Dates: May/June - July/August)

Peace Officer Loan Repayment Assistance Program: The program assists recently appointed Peace Officers who have student debt. Awards are contingent on available funding. Learn more or apply for e-Updates at <http://www.hhloans.com/index.cfm?objectid=E32BBAB0-37DF-11EA-87D10050560100A9>.

City of San Antonio: This region is experiencing the largest increase in COVID-19 cases and hospitalizations since our summer surge. You have the power to slow the spread of COVID-19 in our community. We are asking all San Antonio residents to do their part to contain the spread of COVID-19. Do it for you, your loved ones and for San Antonio! For more information call 3-1-1 or visit <https://covid19.sanantonio.gov/Home>, and <https://covid19.sanantonio.gov/What-YOU-Can-Do/Vaccination>.

Credit Suisse: Students and Graduates, discover a career in finance at Credit Suisse. Learn more at https://www.credit-suisse.com/careers/en/career-opportunities/students-and-graduates.html?WT.i_short-url=%2Fcampuscareers&WT.i_target-url=%2Fcareers%2Fen%2Fcareer-opportunities%2Fstudents-and-graduates.html.

If you are experiencing any problems, feel free to reach out to any of these Student Support offices:

Educational Support Services Administrative Office	210-486-2468	Charlie Brammer
Financial Literacy Services	210-486-2140	Enida Rehome
Tutoring and Technology Center	210-486-2517	Jared Boggs
First Year Programs	210-486-2473	Liz Castillo
Student Advocacy Center	210-486-2378	Eitandria Tello
Counseling Services	210-486-2378	Eitandria Tello
Counseling Services (General Services)	210-486-2117	Rosalinda Rivas
Student Conduct/Title IX	210-486-2741	John Martin