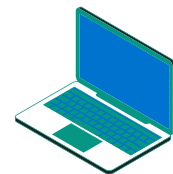




# Nursing Program Information: Preparing to apply!

## Step 1: Apply to Palo Alto College\*

- Complete all enrollment steps required by Palo Alto College.
- Select Palo Alto College as home campus with the major of Biology/Pre-Nursing.



Scan QR code for enrollment steps



**\*Current Alamo Colleges students do not need to reapply but must make PAC their home campus with Biology Pre-Nursing as their major.**

**NOTE:** Applicants who have been academically dismissed or withdrawn from another nursing program for any reason are not eligible for admission to the Palo Alto College Nursing Program.

## Step 2: Complete Pre-requisite Courses

*All courses must be completed with a grade of "C" or higher.*



- ENGL 1301 - Composition I
- BIOL 2401 - Human Anatomy and Physiology I
- BIOL 2402 - Human Anatomy and Physiology II
- BIOL 2420 - Microbiology for Nursing and Allied Health

**The following courses must be completed before the start of nursing courses.**

- PHIL 2306 - Introduction to Ethics
- PSYC 2301 - Intro to Psychology **or** PSYC 2314 Lifespan Growth & Development

***Students must have a GPA of 2.6 or higher and science courses must be taken within the past 5 years.***

## Step 3: Take ATI TEAS 7 Exam

Scan the QR code and sign up to take an in-person TEAS 7 Exam.

***Online exam scores will not be accepted.***

