

Data Point

An item of factual information derived from measurement or research

Labor Market: Alamo Area Wages, Supply & Demand

As displayed in *Figure 35-1* (below), health occupations demonstrate higher labor shortages than other careers deemed top occupations for the Alamo area (south central Texas, San Antonio Metropolitan Service Area). The greatest shortages appear in Diagnostic Medical Sonography, Cardiovascular Technology, and Respiratory Therapy. While all featured occupations have wages above the Texas Median Wage of \$37,099, Diagnostic Medical Sonography also has the third highest potential wage, behind only Occupational Therapy Assistants and Web Developers.

Occupational Title	Wage (2018)	Current Employment (2018)	Current Supply (WIT - Aug 2019)	Job Postings (Aug 2019)	Projections (2026)
Computer Network Support Specialists	68,359	1,250	193	2	2,805
Web Developers	70,880	700	193	141	1,022
Radiologic Technologists	56,565	1,530	61	34	1,927
Respiratory Therapists	62,230	1,360	10	70	1,781
Cardiovascular Technologists and Technicians	50,327	410	15	65	446
Diagnostic Medical Sonographers	69,394	320	7	72	661
Preschool Teachers, Except Special Education	38,072	2,130	118	93	3,488
Physical Therapist Assistants	66,300	590	18	31	819
Occupational Therapy Assistants	79,946	330	9	26	671
Medical Equipment Repairers	44,930	290	23	14	315

Figure 35-1 Condensed Top Occupations by Projections, Alamo Area

Data Source: [Texas Labor Analysis](#)

Featured Top Occupations: Alamo Area Current Employment 2018 v. Projected Employment 2026

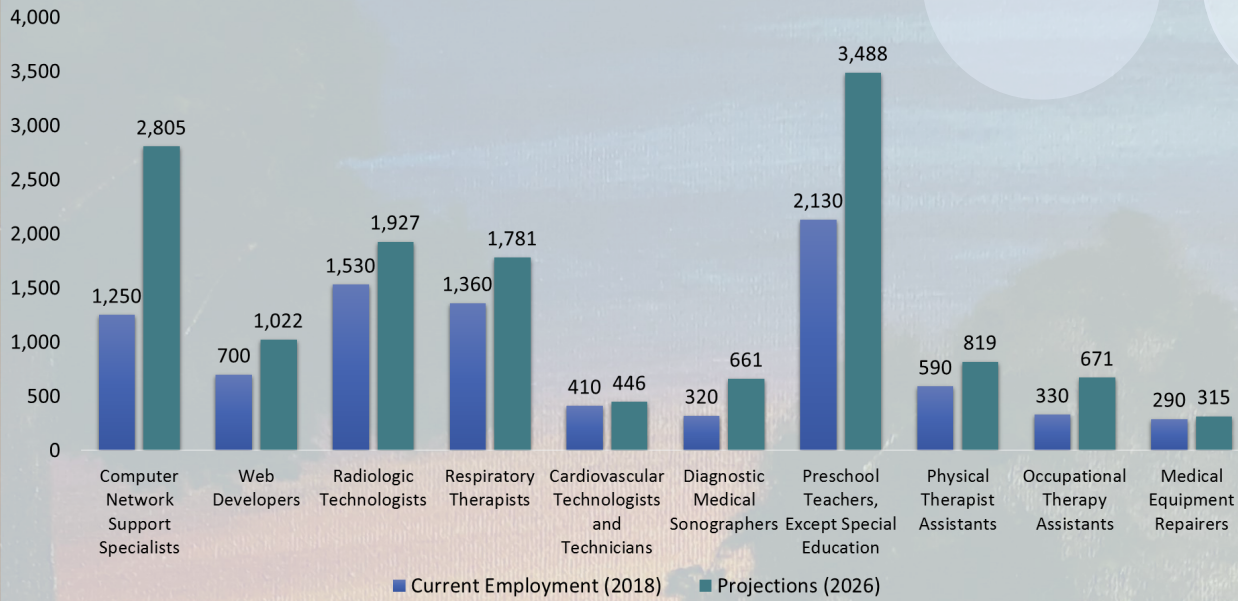


Figure 35-2 2018 Employment compared to 2026 Projections in featured Top Occupations

Data Source: [Texas Labor Analysis](#)

Figure 35-2 (above) highlights current (2018) employment compared against projected labor needs (2026). As shown, job growth is anticipated in all featured Top Occupations in the Alamo Area.

Figure 35-3 (right) demonstrates the separation between current labor supply and job postings (August 2019), which indicates five featured Top Occupations lack adequate labor supply.

Featured Top Occupations: Alamo Area Current Labor Supply Aug. 2019 v. Current Job Postings Aug. 2019

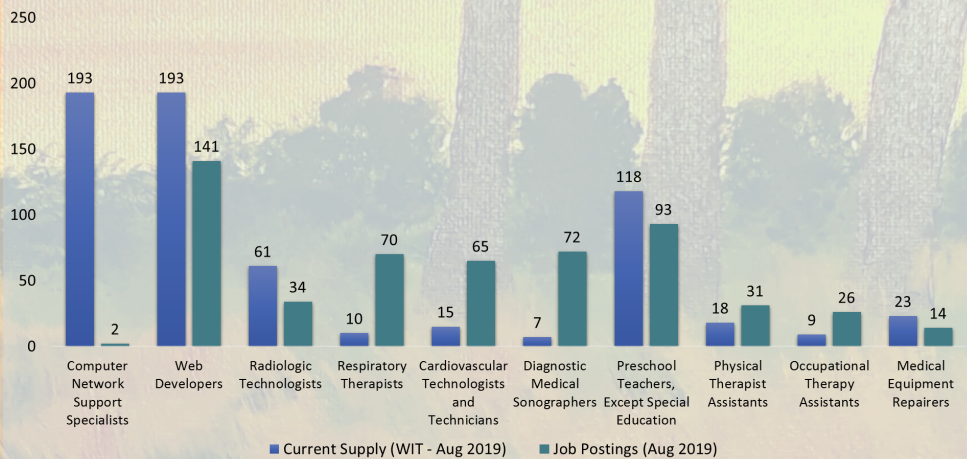


Figure 35-3 August 2019 Labor supply compared to job postings (Demand)

Data Source: [Texas Labor Analysis](#)



St. Philip's College

HTTPS://
WWW.ALAMO.EDU/SPC

Institutional Planning, Research & Effectiveness

Dr. Melissa Guerrero, Director

TBD, IT Data Analyst

Shanna Bradford, Coordinator of Measurement & Evaluation